



Quarterly
Update for
Community
Development
Human
Services
Committee

March 1, 2022



@atlantabeltline





ATLANTA BELTLINE VISION

\$10 BILLION in economic development

22 MILES of pedestrian-friendly rail transit

1,300 ACRES of new greenspace



50,000 PERMANENT JOBS

33 MILES of multi-use, urban trails



5,600 UNITS of affordable workforce housing

ATLANTA BELTLINE VISION:
To be the catalyst for making Atlanta a global beacon for equitable, inclusive, and sustainable city life.

EQUITY & INCLUSION



COMMUNITY ENGAGEMENT



48,000 CONSTRUCTION JOBS



1,100 ACRES of environmental clean-up



PUBLIC ART





SIGNIFICANT MILESTONES

Work is underway in all four quadrants

New funding provides path to completing multi-use trail

Surpassed 50% of affordable housing goal





AFFORDABLE HOUSING

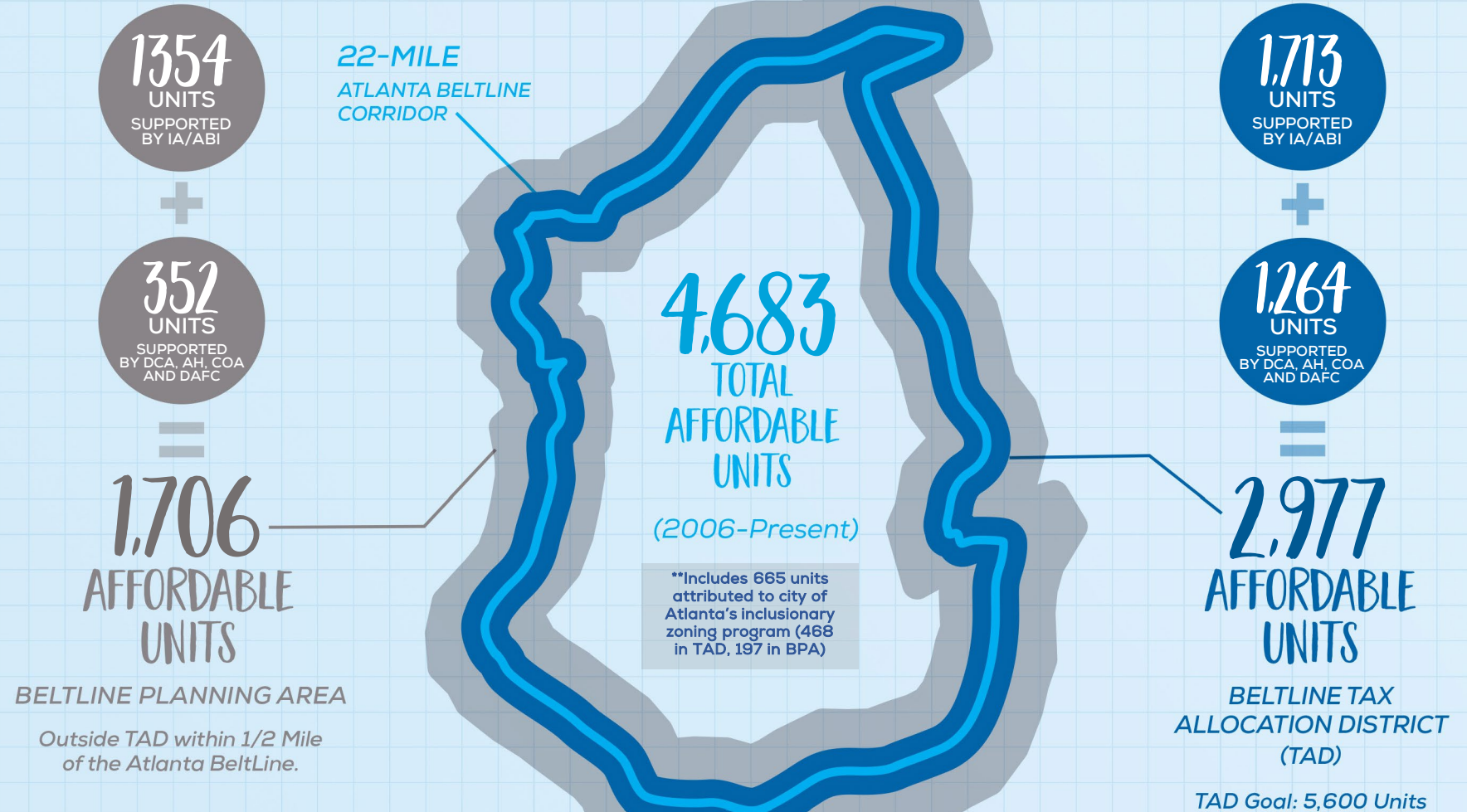
AFFORDABLE UNITS CREATED/PRESERVED

TAD and Planning Area boundaries are represented here for illustrative purposes only.

For precise boundary lines, please visit: beltline.org/map

CHART LEGEND >>

- ABI Atlanta BeltLine
- AH Atlanta Housing
- COA City of Atlanta
- DAFC Development Authority of Fulton County
- DCA Department of Community Affairs
- IA Invest Atlanta





AFFORDABLE HOUSING CREATED/PRESERVED

Funding affordable housing solely within BeltLine TAD

Tracking affordable units within BeltLine Planning Area

Atlanta BeltLine Affordable Housing Locations: 4,683 Total Units

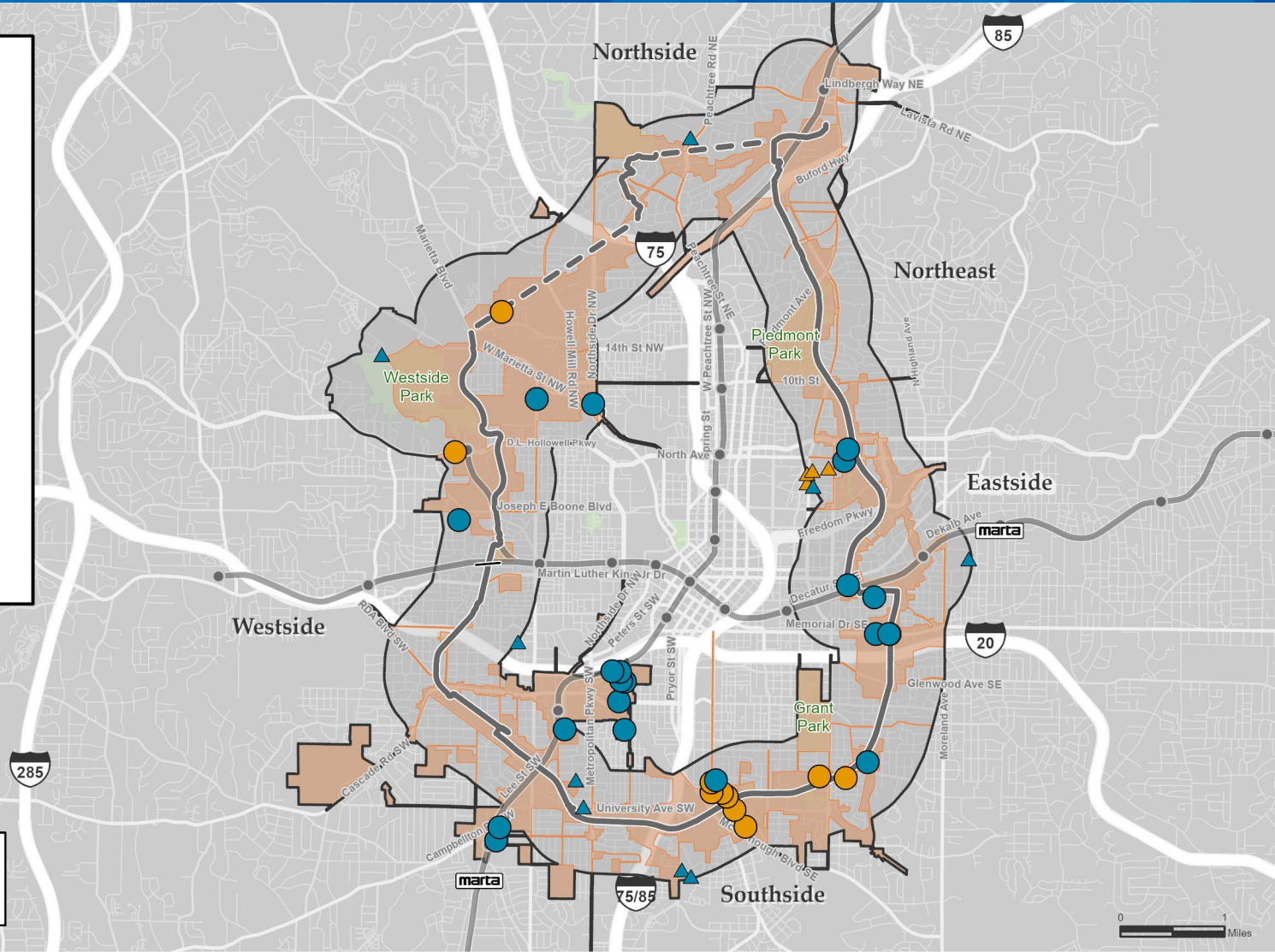
	In TAD	In BPA
Completed	●	▲
Under Construction	●	▲
Total Units	2,977	1,706

- Atlanta BeltLine Trail Corridor
- Atlanta BeltLine Tax Allocation District (TAD)
- Atlanta BeltLine Planning Area (BPA)

Total affordable units includes:

- Developments supported by partners including IA, DCA, AH, COA and DAFC
- Single family units created/preserved
- 665 units attributable the City of Atlanta Inclusionary Zoning Program (In TAD: 468, In BPA: 197)

Atlanta BeltLine Affordable Housing
Updated: February 2022





SKYLINE APARTMENTS

Closed in February
2022

Puts ABI over 50%
of 5,600 goal
through end of
2030

Address: 1090 Hank
Aaron Drive, Atlanta, GA
30315 (Peoplestown)
250-unit building

Developer: Exact Capital
Group, LLC.

100% affordable

- 250 units @ or below
60% AMI
 - 46 studios
 - 101 1-bedroom
 - 103 2-bedroom





AFFORDABLE HOUSING PRODUCTION

2006-2018:

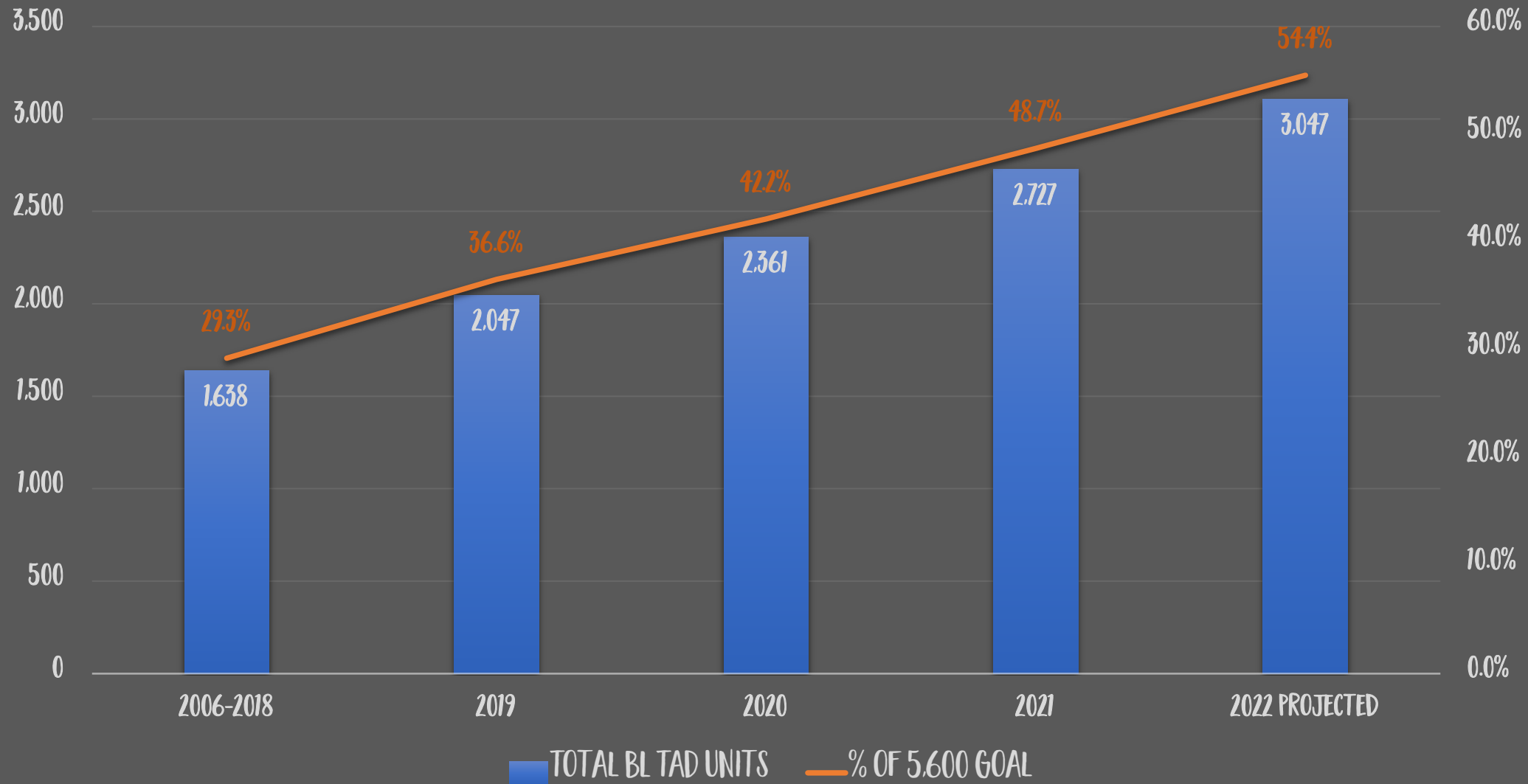
- 1,638 units created or preserved in TAD

2021:

- 366 units created or preserved, exceeding goal of 320 units

2022:

- 2,977 units have been created/preserved in the TAD since 2006
- We are 53.1% toward our goal of 5,600 units by 2030
- 2022 Goal of 320 units





AFFORDABLE HOUSING

- Legacy Resident Retention Program pays increase in property taxes through 2030 for qualifying residents
 - More than 50 residents have been enrolled





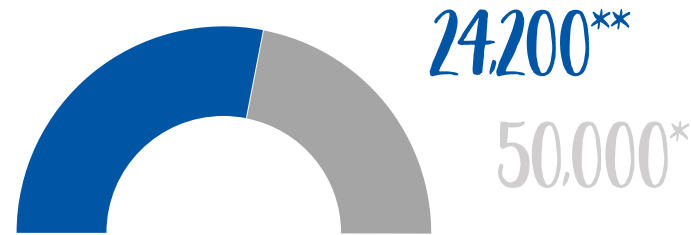
JOB CREATION

REDEVELOPMENT PLAN GOALS

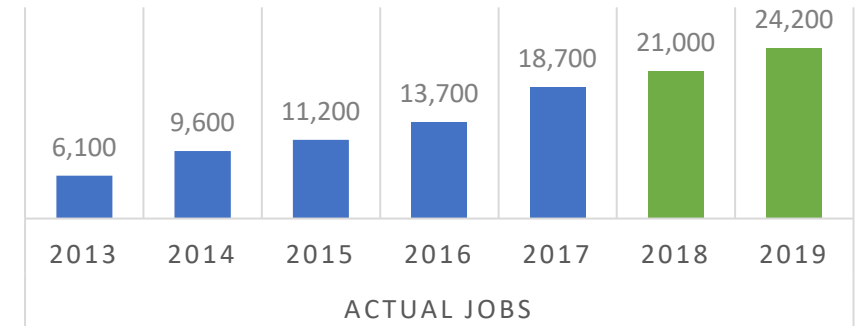
50,000 Permanent Jobs*
 • 24,200 (as of 2019)

48,000 Construction Jobs
 • 49,470 (as of 2020)

Permanent Private Job Creation (Beltline Planning Area)



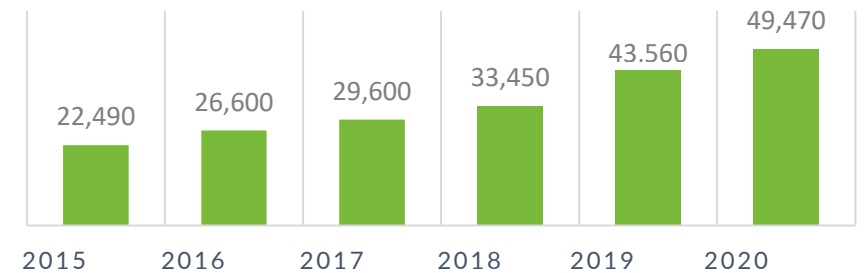
ESTIMATED JOB ATTRACTION



One-Year Construction Job Creation



CONSTRUCTION JOBS ESTIMATE



*With the passage of the SSD, ABI increased the target goal from 30,000 to 50,000

**Source U.S. Census Data and Private Investment Tracking



ECONOMIC DEVELOPMENT

- Goal: support small biz
- Meet and greet events to connect DBEs
- Commercial affordability strategies
- Business Façade pARTnership Grant





IMPACT OF INVESTMENTS

New map tracks specific investment categories to track financial investment, progress, and results over time

Led to Equity Priority Subareas for program development and strategies



Atlanta BeltLine Investment Data Explorer

This mapping tool shows investments made through federal, state and local public grants as well as private and philanthropic funds through 2020.

Powered by



Investment Overview

This map shows all BeltLine investments aggregated to the project's subarea levels. Click on any subarea to learn more about overall investments.

See Investment Details

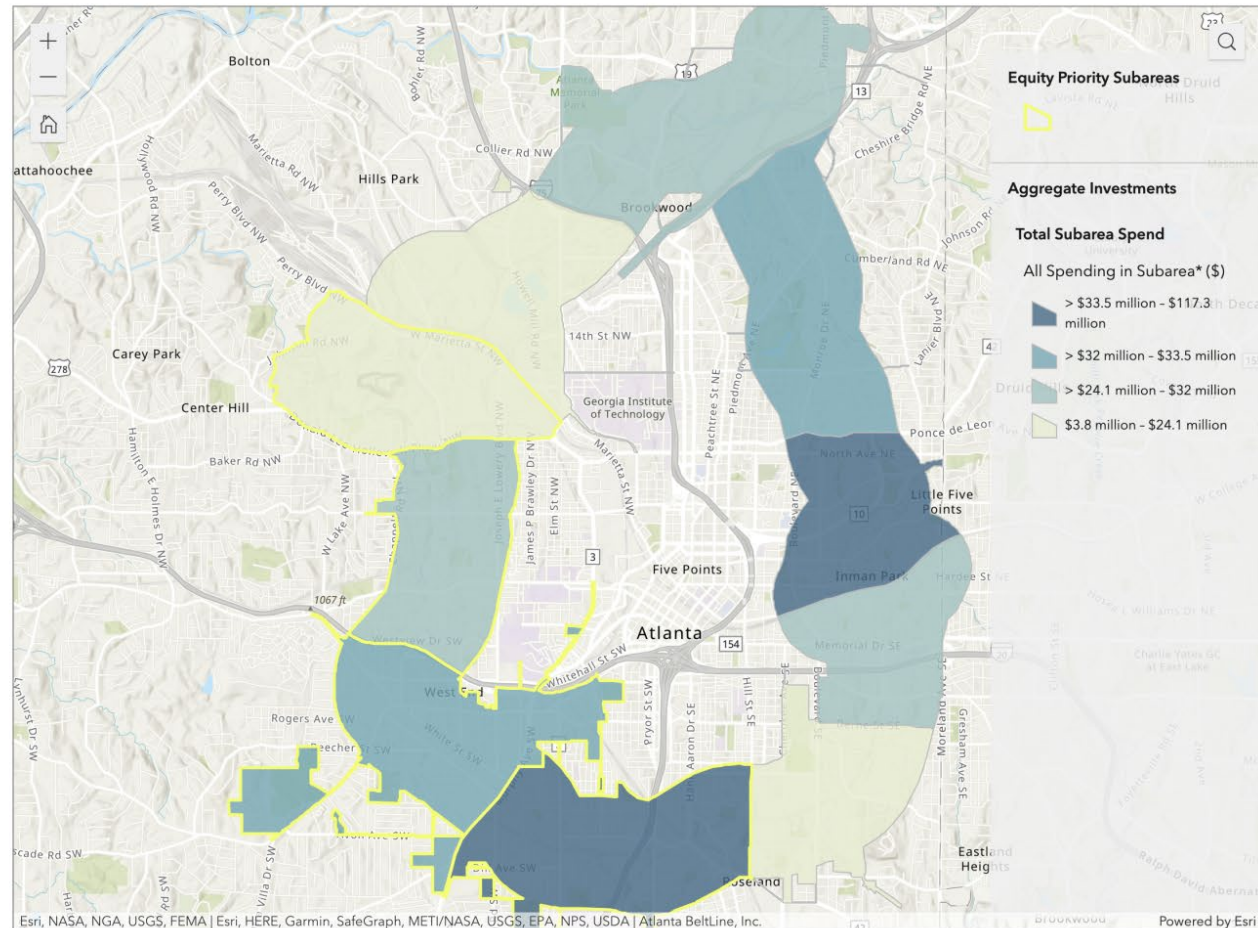
Use the buttons below to jump to specific BeltLine investment categories and see project locations related to these investments.

- [Housing](#)
- [Parks & Trails](#)
- [Transit & Streetscapes](#)
- [Economic Development](#)
- [Arts & Culture](#)

See all investments

Click below to see all BeltLine investment locations as well as select equity indicators.

[See all](#)



About the explorer

This application is designed to help residents and community leaders understand the nature of investments made by the Atlanta BeltLine. The map is fully interactive, and you can click on any location to learn more details about the area.

The buttons to the left of the map will take you to pages with more detailed investment information. For more about the Investment Explorer, click on the button below to open a quick-start guide with instructions and other information about the data.

[Open the Quick Start Guide](#)

Need demographic data?

Click the button below for a quick view of the Atlanta BeltLine Demographic Data Explorer.

[See demographics](#)



TRAIL UPDATES

Westside Trail – Segment 3

- Construction nearing completion

Northeast Trail – Segment 2, Phase 2

- Hiring construction contractor

Northwest Trail Alignment Study

- Prioritized alignments to be announced around April

Southside Trail

- Finishing access improvements

Streetscapes

- Shovel Ready

Atlanta BeltLine Trails

- Completed
- Under Construction
- Shovel Ready
- In Design
- Study in Progress**

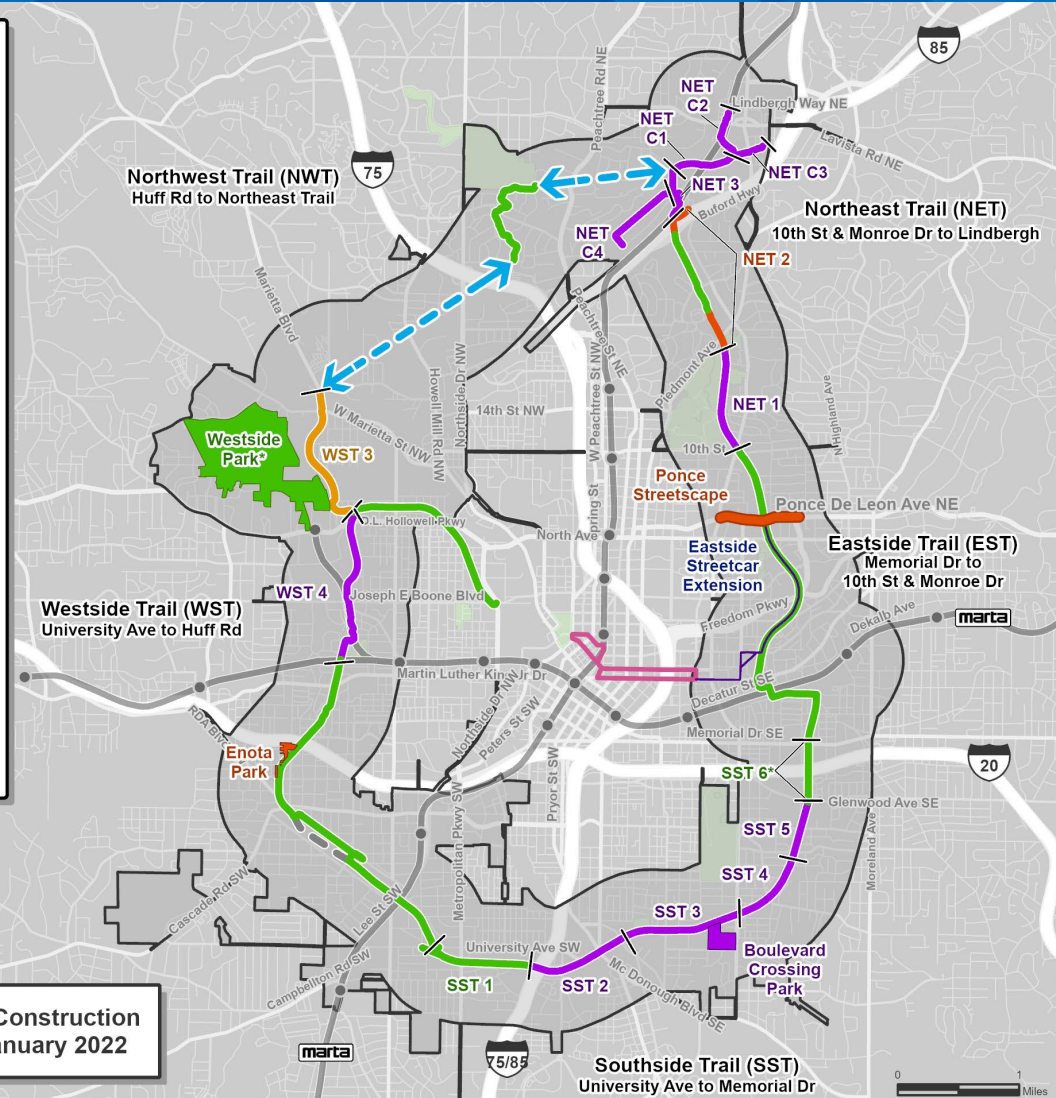
Atlanta BeltLine & Partner Parks

- Complete
- Shovel Ready
- In Design

Atlanta BeltLine Streetcar

- Study in Progress (MARTA)
- Downtown Atlanta Streetcar
- Atlanta BeltLine Planning Area (BPA)

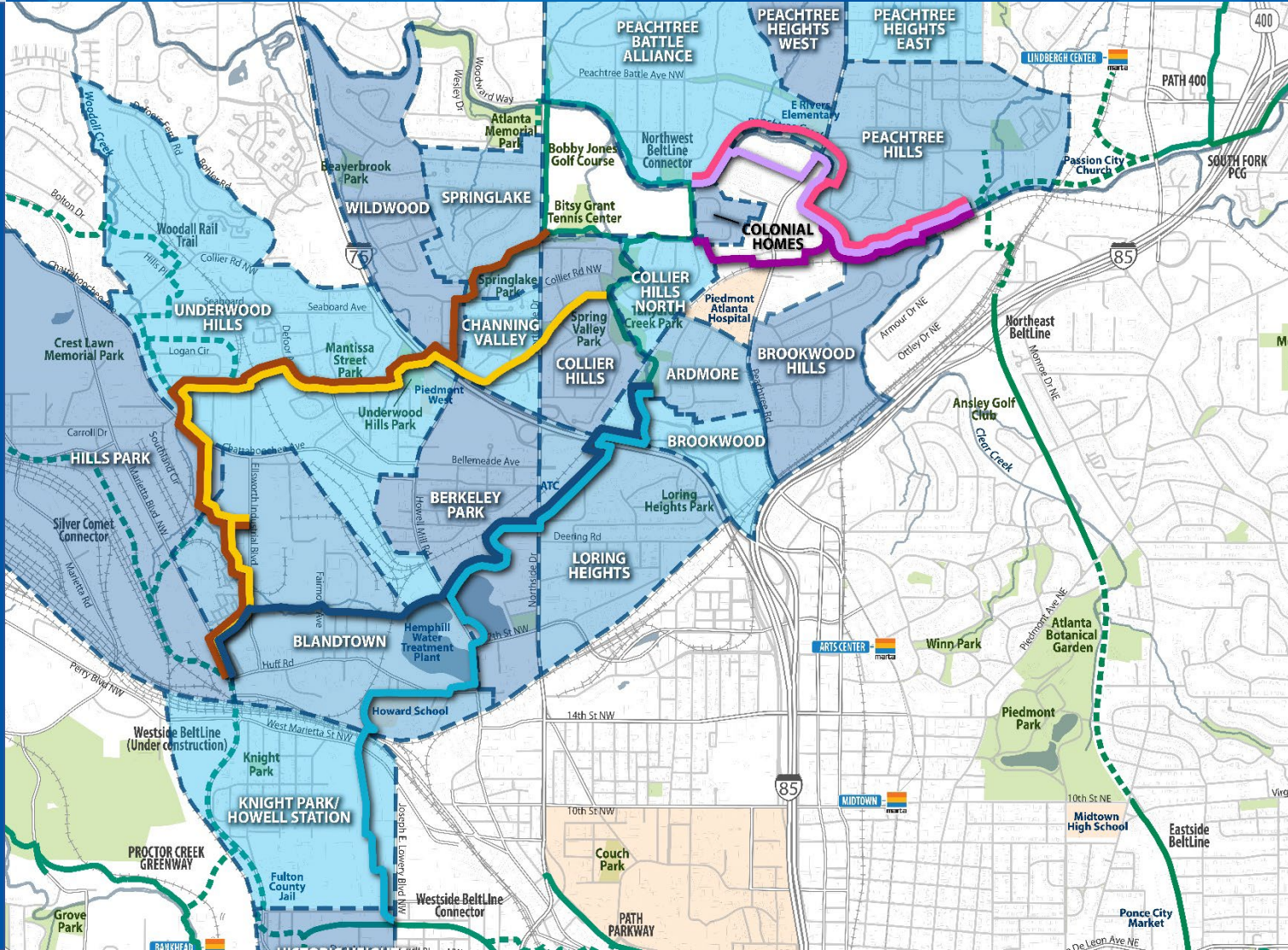
*Westside Park and Southside Trail Segment 6 are partially complete and open to the public. Additional phases are planned.
**NWT - Multiple alignments are under consideration.



Atlanta BeltLine Design & Construction Project Status Update: January 2022



NORTHWEST CORRIDOR



Legend

- NW BeltLine Trail Study Corridors
- Corridor #1
- Corridor #2
- Corridor #3
- Corridor #4
- Corridor #5
- Corridor #6
- Corridor #7
- Neighborhood Boundary
- Existing Trail
- Planned Trail
- Park

These corridors are concepts and are subject to change as design, engineering, and community engagement progresses





ARTS & CULTURE

Reynoldstown
Community
Space

Atlanta BeltLine
Lantern Parade

- May 21
- Westside Trail





QUESTIONS?

