



FULTON COUNTY BOARD OF HEALTH
COVID-19 REPORT

Quarterly Board Report

Lynn Paxton, M.D., M.P.H. - Fulton County Board of Health District Health Director

October 27, 2021

As of October 22, 2021, Fulton County has recorded **110,398 confirmed cases** and **20,756 probable cases** of COVID-19.

Figure 1 shows both confirmed and probable case counts but the ensuing tables and figures use data from **confirmed cases only**.

Fig 1. Daily and Cumulative Confirmed and Probable COVID-19 cases in Fulton County, GA

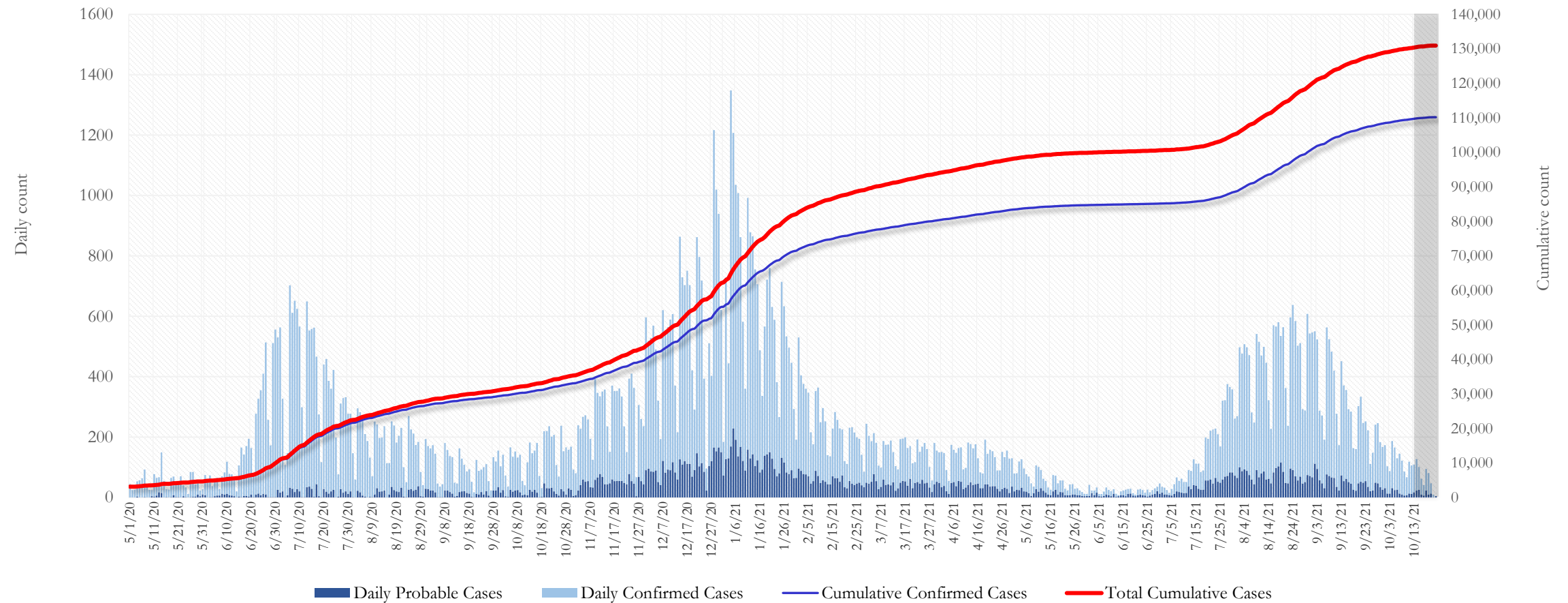
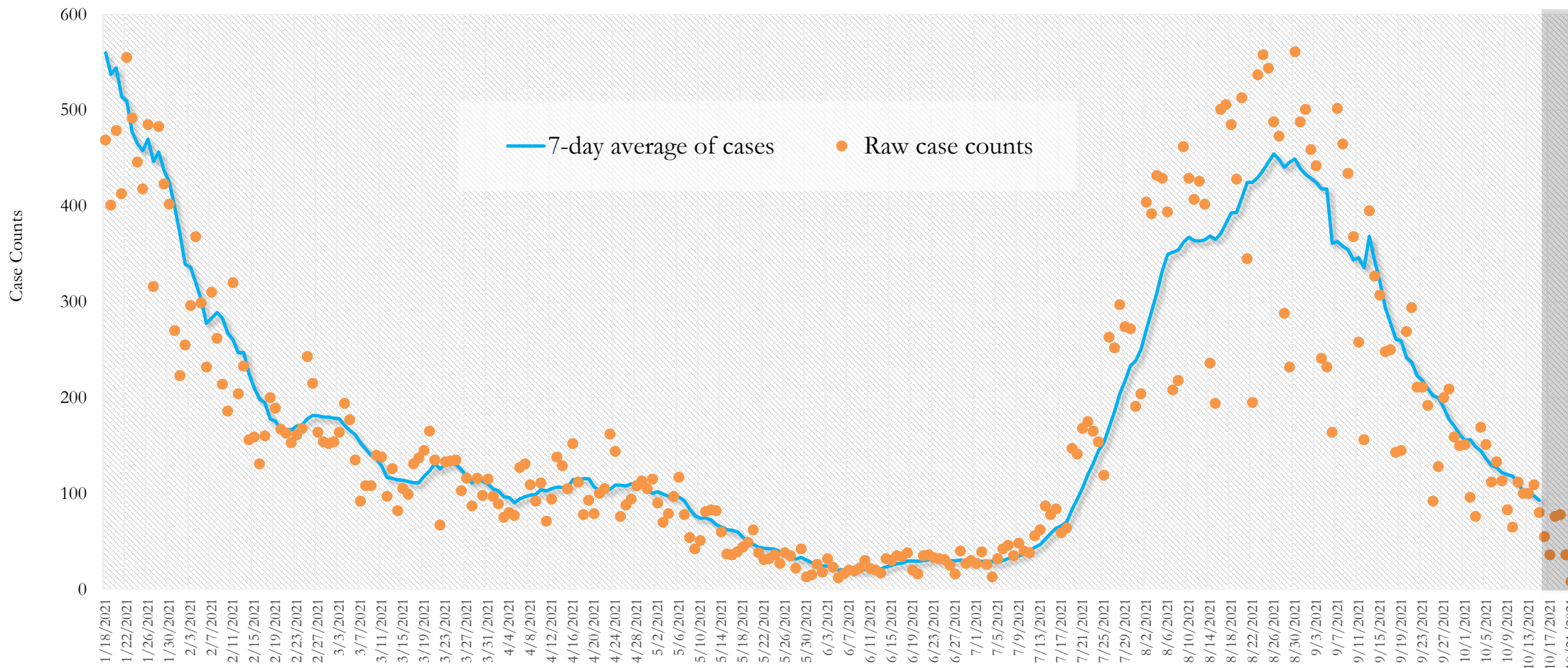
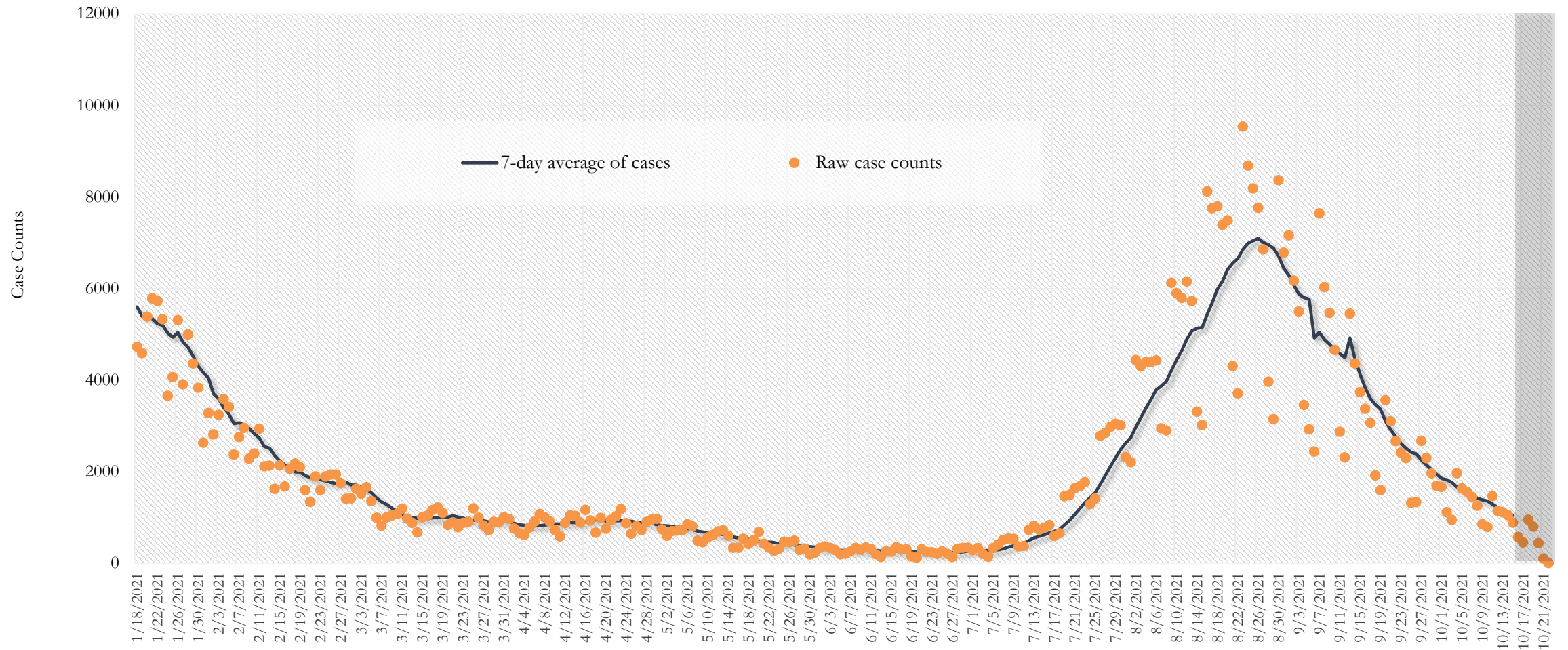


Fig. 2. New COVID-19 Cases in Fulton County Daily (Averaged over 7 days)



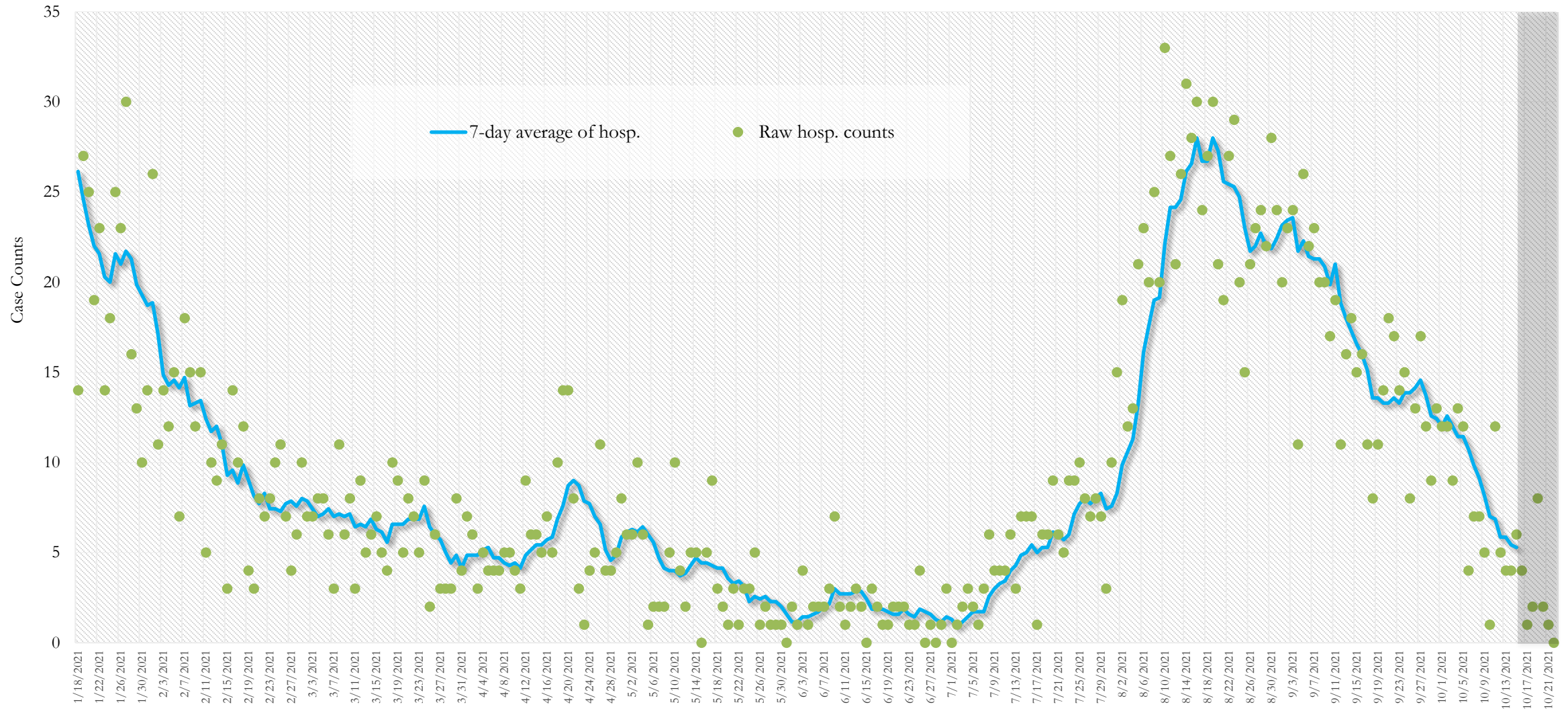
**Date of collection of first positive sample used (report creation date used where sample collection date is missing). Graph above reflects the trend in COVID-19 diagnosis. Due to the high volume of testing in recent weeks, there have been delays in reporting lab results. Thus, the trend is subject to change as more lab results get added to the state surveillance database.*

Fig. 3. New COVID-19 Cases in Georgia State Daily (Averaged over 7 days)



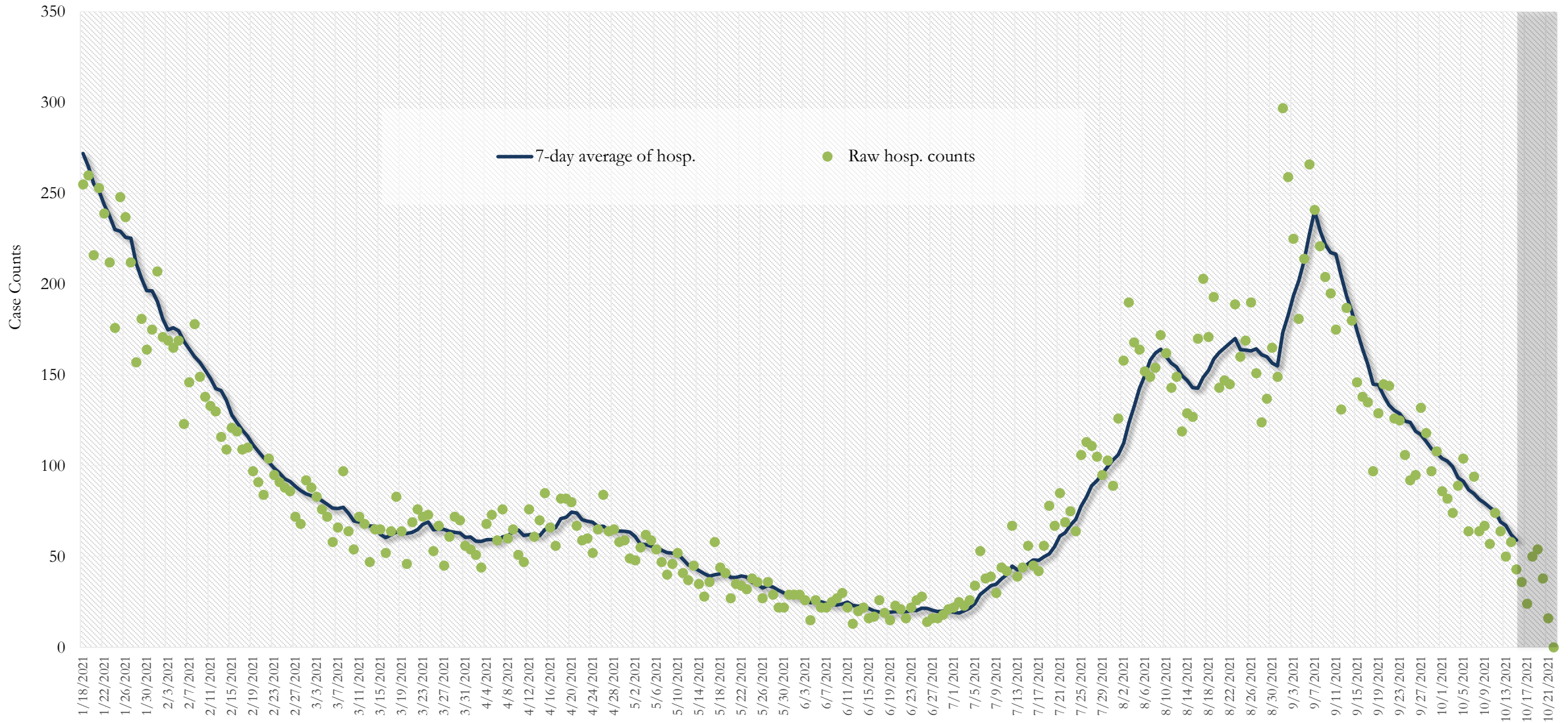
**Date of collection of first positive sample used (report creation date used where sample collection date is missing). Graph above reflects the trend in COVID-19 diagnosis. Due to the high volume of testing in recent weeks, there have been delays in reporting lab results. Thus, the trend is subject to change as more lab results get added to the state surveillance database.*

Fig. 4. COVID-19 Hospitalizations in Fulton County Daily (Averaged over 7 days)



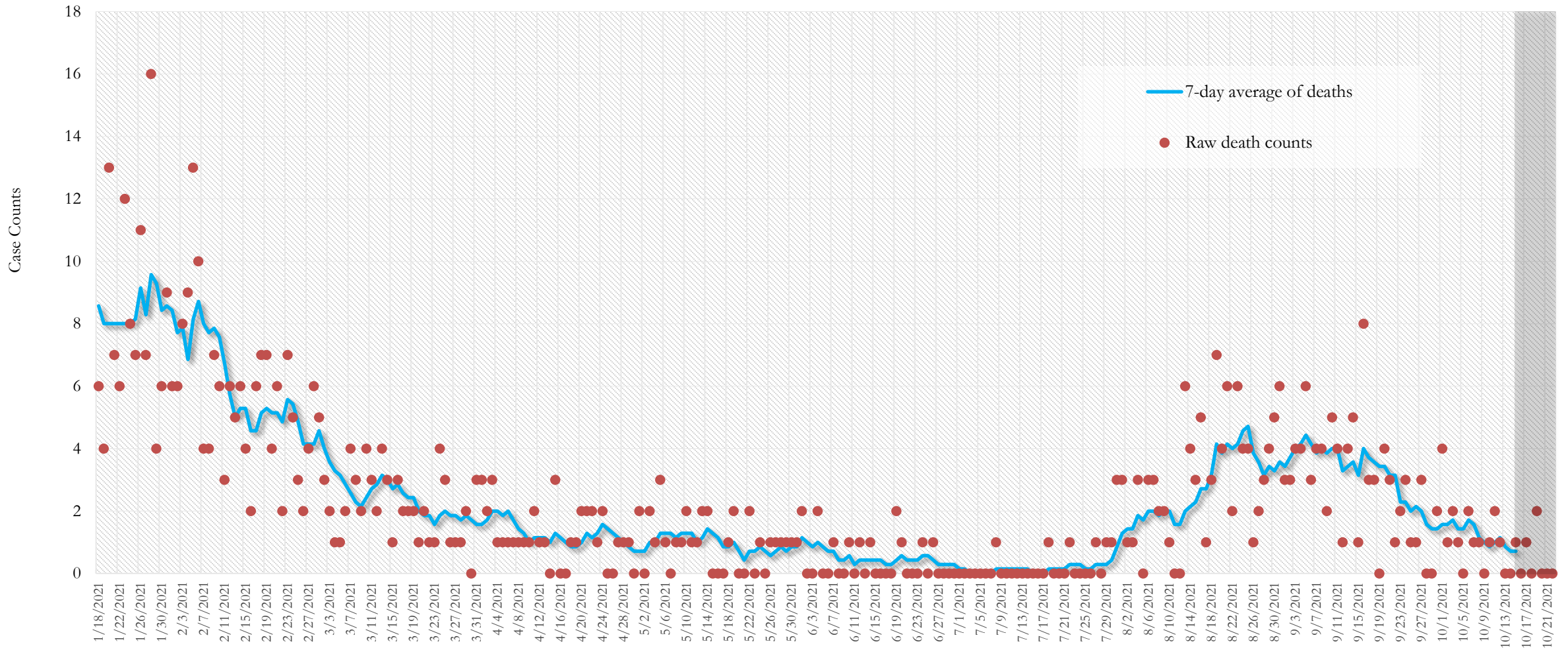
*Reported date of hospital admission used. Graph above reflects the trend in COVID-19 hospitalizations. Due to the high volume of new cases being added daily, there have been delays in reporting hospitalization data. Thus, the trend is likely to change as more hospitalization data is reported in the state surveillance database.

Fig. 5. COVID-19 Hospitalizations in Georgia State Daily (Averaged over 7 days)



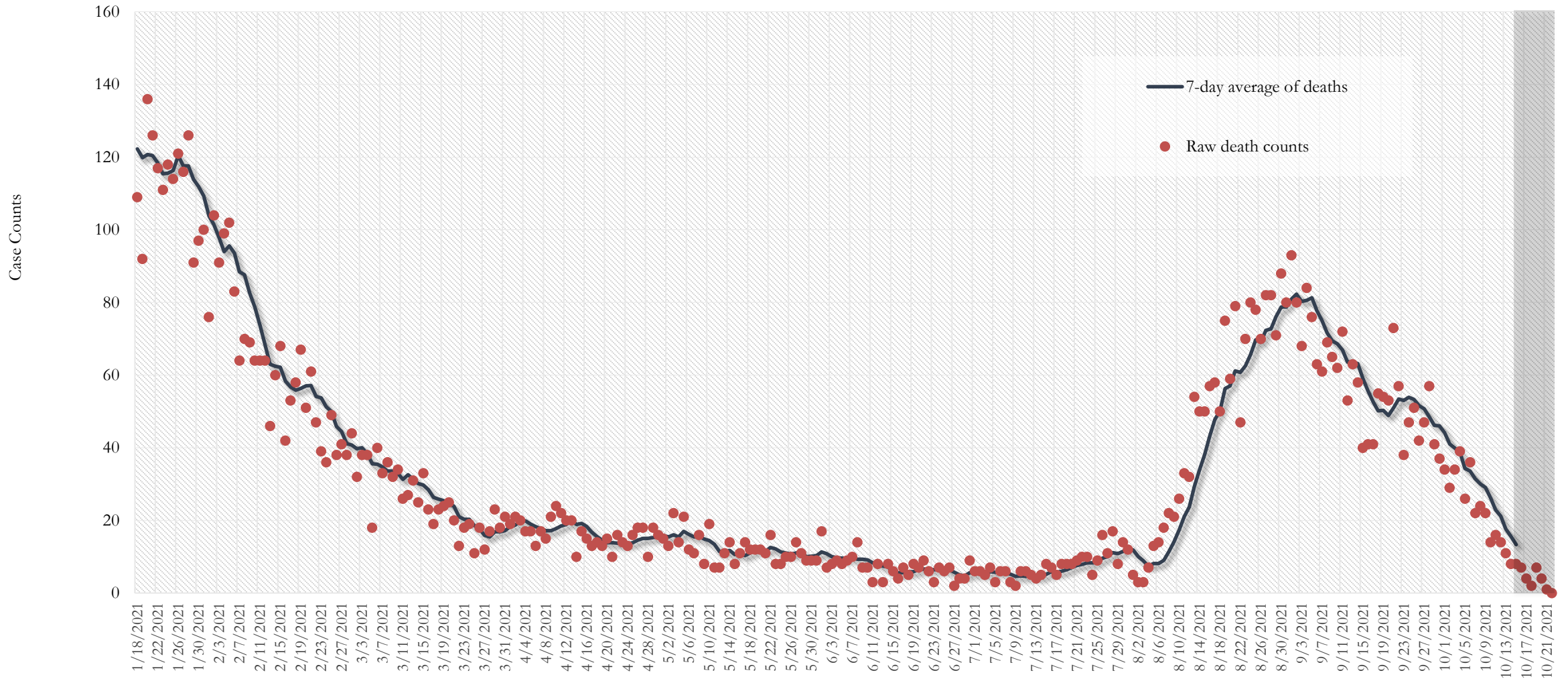
**Reported date of hospital admission used. Graph above reflects the trend in COVID-19 hospitalizations. Due to the high volume of new cases being added daily, there have been delays in reporting hospitalization data. Thus, the trend is likely to change as more hospitalization data is reported in the state surveillance database.*

Fig. 6. COVID-19 Deaths in Fulton County Daily (Averaged over 7 days)



**Reported date of death used. Graph above reflects the trend in deaths attributed to COVID-19. The trend is likely to change as more data on deaths among persons with COVID-19 is reported in the state surveillance database.*

Fig. 7. COVID-19 Deaths in Georgia State Daily (Averaged over 7 days)



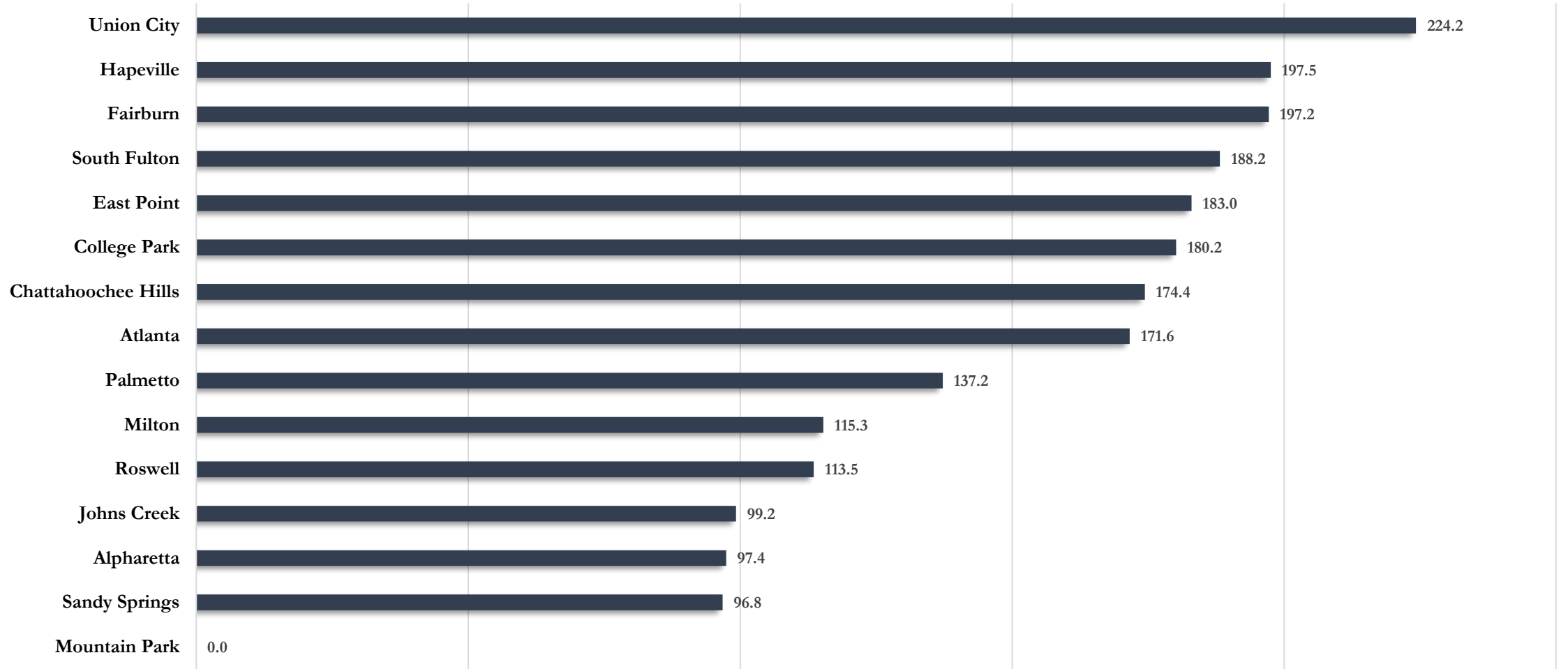
**Reported date of death used. Graph above reflects the trend in deaths attributed to COVID-19. The trend is likely to change as more data on deaths among persons with COVID-19 is reported in the state surveillance database.*

COVID-19 CASE COUNTS AND RATES BY CITY

	Recent 14-day reporting period ¹	Preceding 14-day reporting period	% Change from preceding 14 days (%) ²	14-Day Incidence Rate ³
	10/2-10/15	9/18-10/1		
Alpharetta	63	101	↓ 37.6%	97.4
Atlanta	757	1117	↓ 32.2%	171.6
Chattahoochee Hills	<10	<10	-	174.4
College Park	25	31	↓ 19.4%	180.2
East Point	64	89	↓ 28.1%	183.0
Fairburn	29	37	↓ 21.6%	197.2
Hapeville	13	<10	↑ 44.4%	197.5
Johns Creek	83	119	↓ 30.3%	99.2
Milton	44	57	↓ 22.8%	115.3
Mountain Park	0	0	-	0.0
Palmetto	<10	<10	-	137.2
Roswell	107	134	↓ 20.1%	113.5
Sandy Springs	102	175	↓ 41.7%	96.8
South Fulton	179	304	↓ 41.1%	188.2
Union City	47	77	↓ 39.0%	224.2
Unknown	37	24	-	-

¹New cases: Cases diagnosed in most recent 14 days (based on reported dates of positive sample collection). To allow for lag in reporting results of new diagnoses from samples collected in the most recent week, data used for incident diagnoses analyses were moved back by one week. ²% change: These reflect the percentage increase or decrease in new diagnoses between the 14 days preceding the most recent 7 days and the 14 days preceding that. ³(Incidence) Rate: Rate of new diagnoses in the last 14 day period preceding the immediate past week. ****Data cleaning (either during case interviews or address geo-coding) may lead to reassignment of few cases from one territory to another based on their corrected addresses. These may appear as "decreases" when compared to the previous counts. These do not reflect errors in the data collection or analysis process but only reflect the minor day-to-day fluctuations in case counts that arise in an evolving public health database like COVID's. ⁴Incidence rate is skewed high due to small population. Note: All data reported are preliminary and subject to change.**

Fig. 8. Incidence Rates by Fulton City for Recent 14-day Reporting Period



**Rates shown are per 100,000 persons | All data shown are preliminary and are subject to change as testing results get updated.*

Fig. 9. Density Map – New COVID-19 Cases (October 2–October 15, 2021) in Fulton County

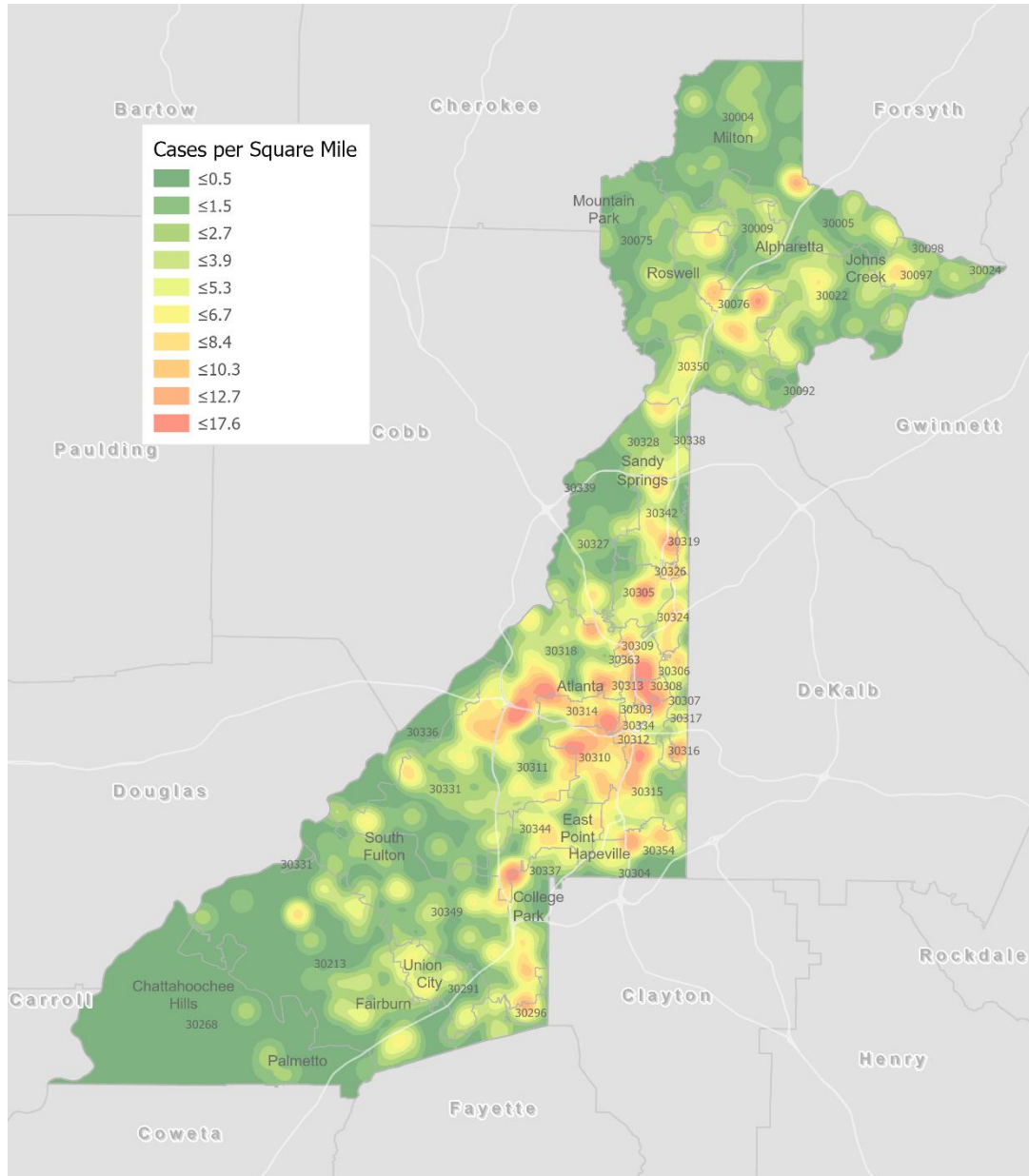


Fig. 10. New COVID-19 Diagnoses Rates (per 100,000 population) by Zip Code (October 2 – October 15, 2021)

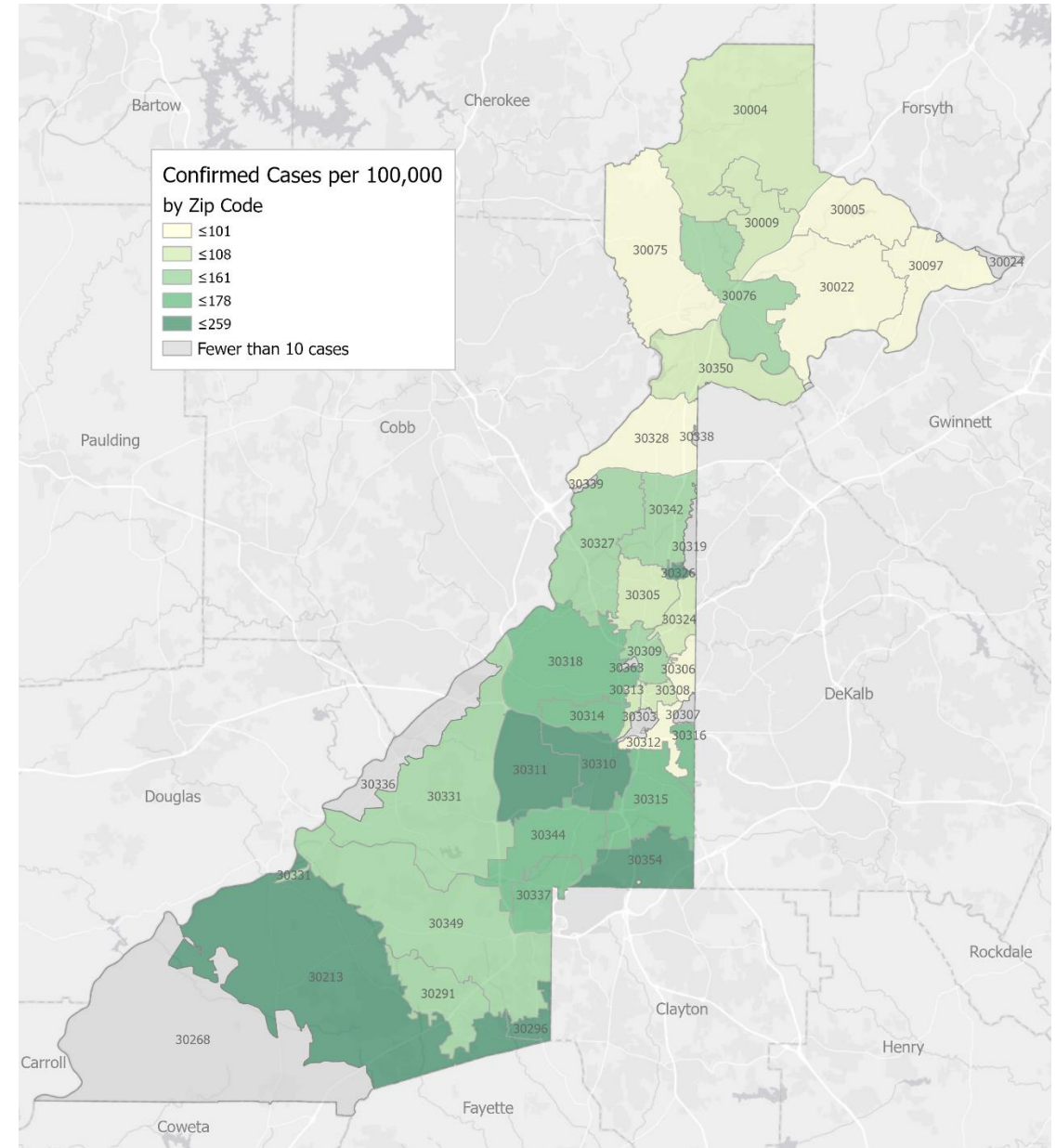


Fig. 11. Fulton County Covid-19 Cases Hospitalized and Admitted to ICU by Month

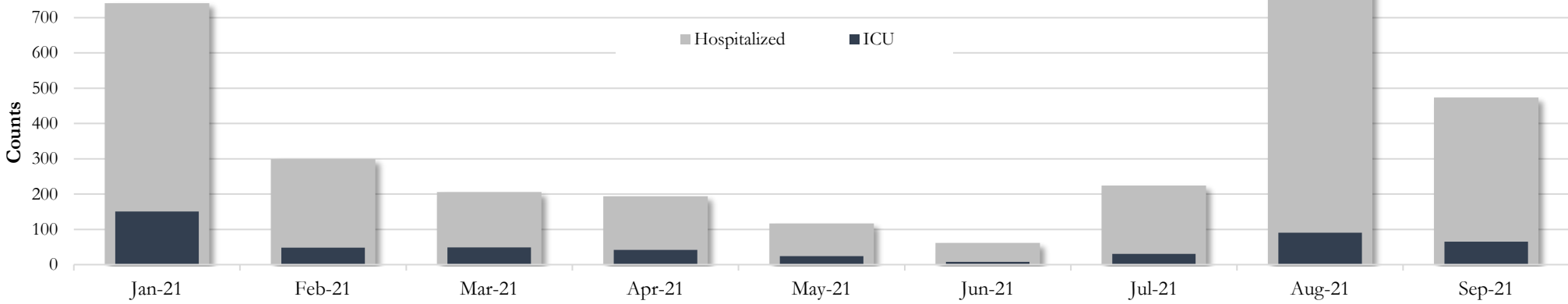
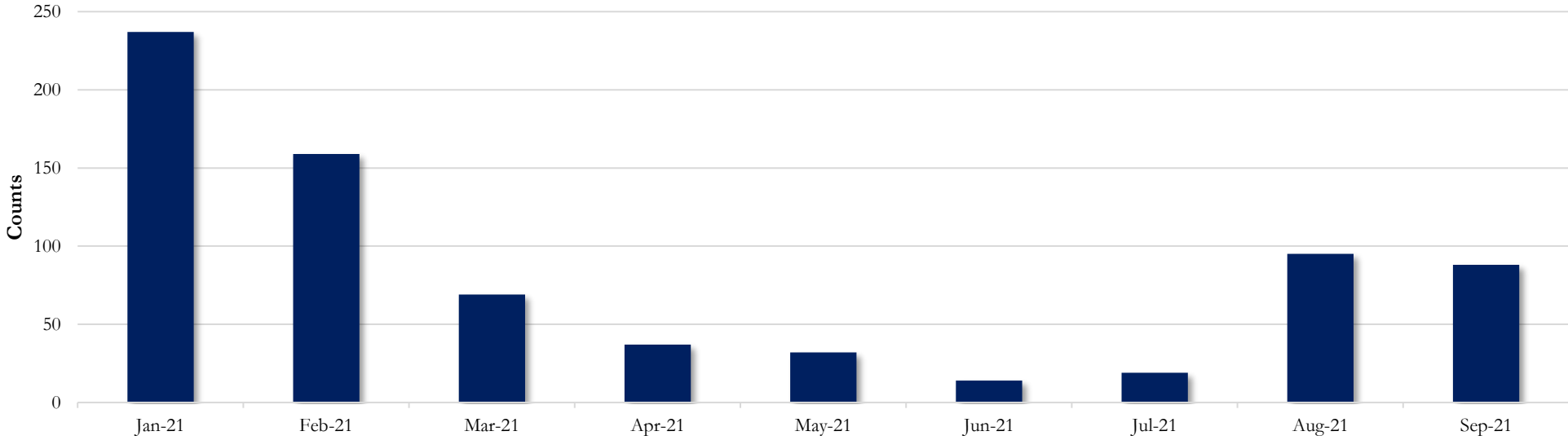


Fig. 12. Fulton County Confirmed Covid-19 Deaths by Month



Values for August and September 2021 in figures 13 and 14 are subject to change as more hospitalizations, ICU admissions, and deaths get reported to state and local entities.

Fig. 13. Hospitalizations, ICU Admissions, Intubations, and Deaths among all Covid-19 Cases in Fulton County since January 1, 2021

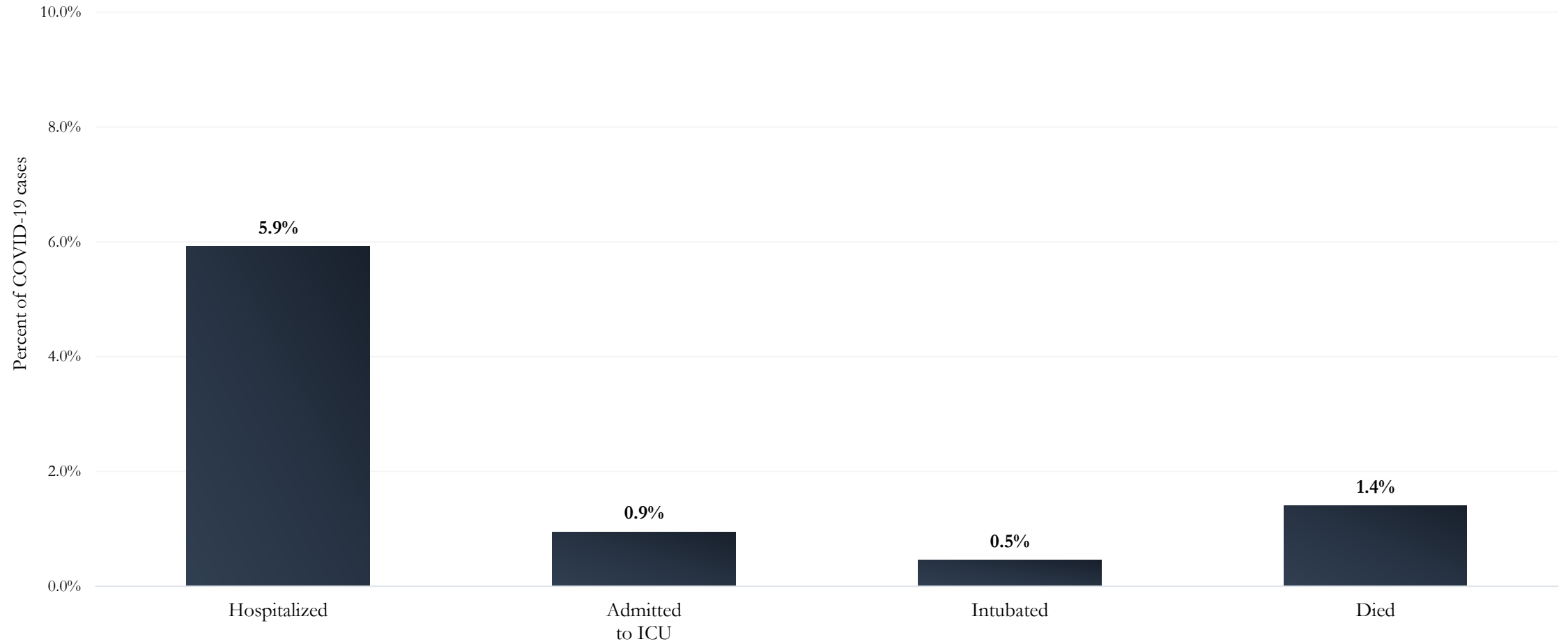
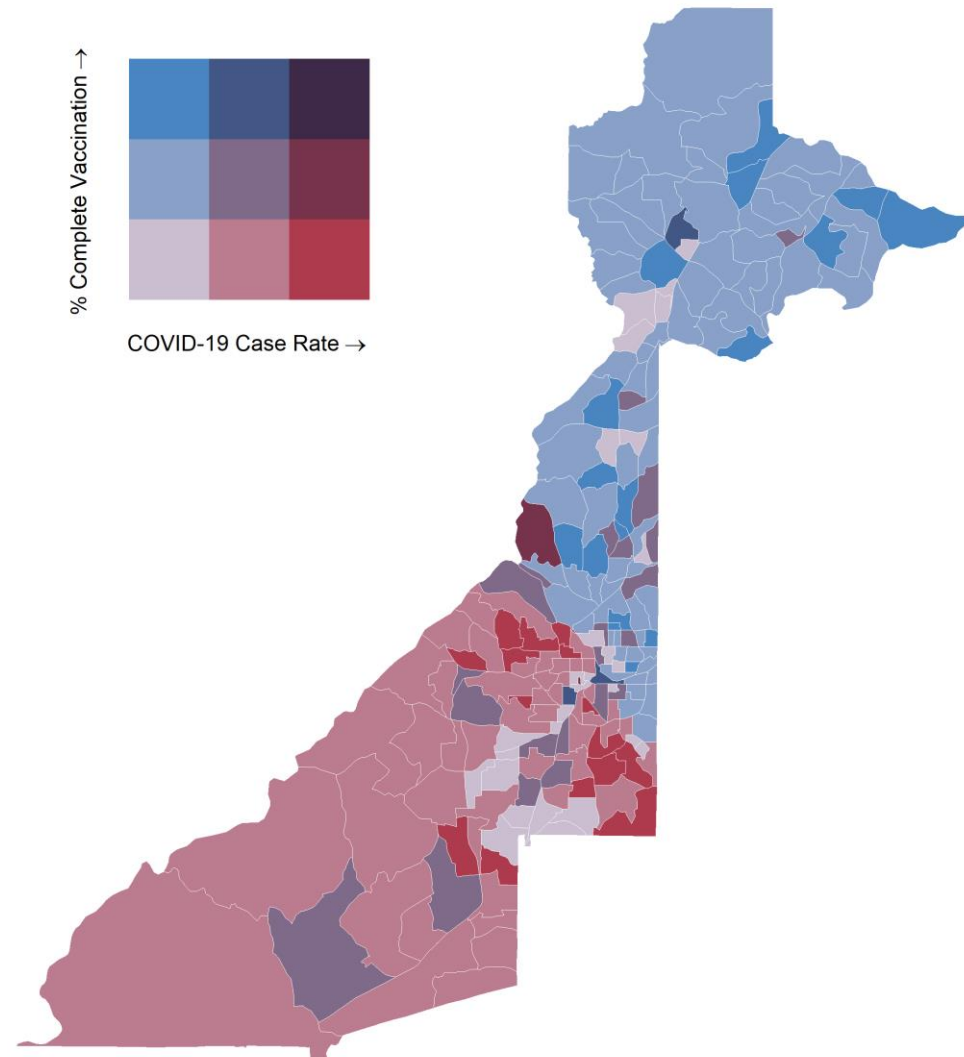
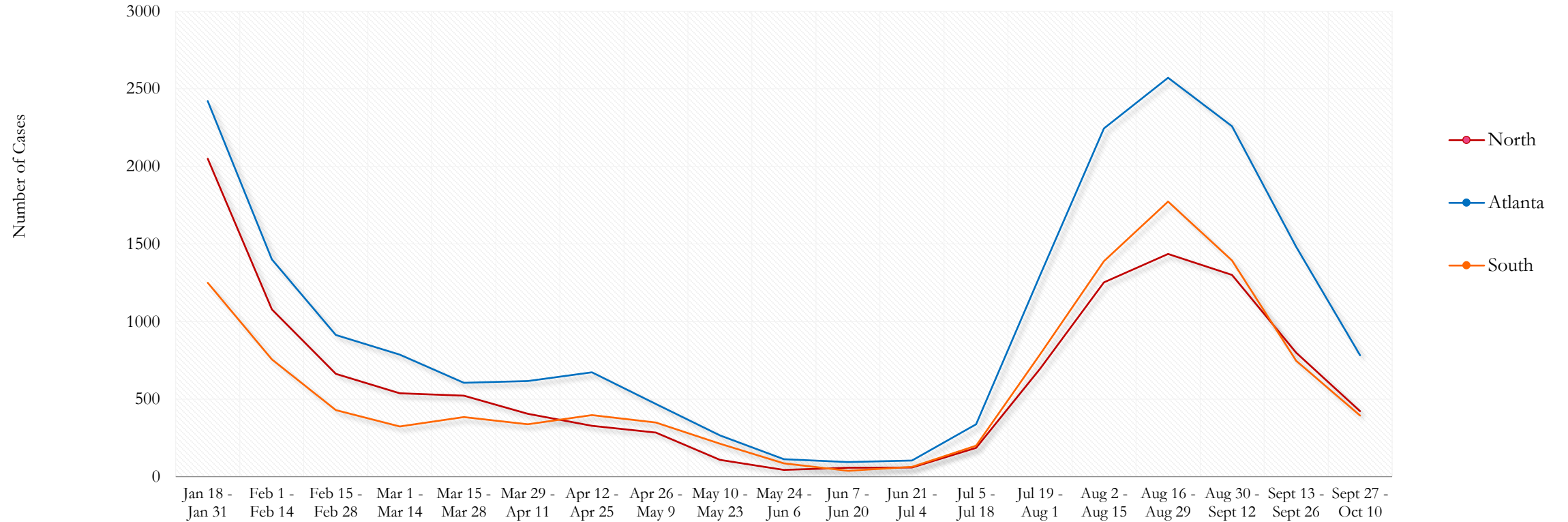


Fig. 15. Percent Complete Vaccination and COVID-19 Case Rate (per 100,000 population) by Census Tract



How to interpret these colors: The darker the blue, the better. The upper most blue box indicates low COVID-19 case rates and high vaccination coverage. Red is not ideal as red indicates high COVID-19 case rates and low vaccination coverage. Colors in between indicate varying combinations of COVID-19 case rates and vaccination coverage. COVID-19 case rate reflects new COVID-19 cases diagnosed between September 13 and October 10, 2021 across Fulton County. Vaccination data from: <https://experience.arcgis.com/experience/3d8eea39f5c1443db1743a4cb8948a9c>

Fig. 18. Trends in Geographic distribution of Covid-19 Cases in Fulton County by 14-day periods



In the past two weeks, Atlanta accounted for the majority of new cases.

**North -Includes all Fulton cities north of Atlanta (Alpharetta, Johns Creek, Milton, Mountain Park, Roswell, Sandy Springs)*

**South - Includes all Fulton cities south of Atlanta (Chattahoochee Hills, College Park, East Point, Fairburn, Hapeville, Palmetto, South Fulton, and Union City)*

Fig. 19. Trends in Racial Distribution of Covid-19 Cases in Fulton County by 14-day periods

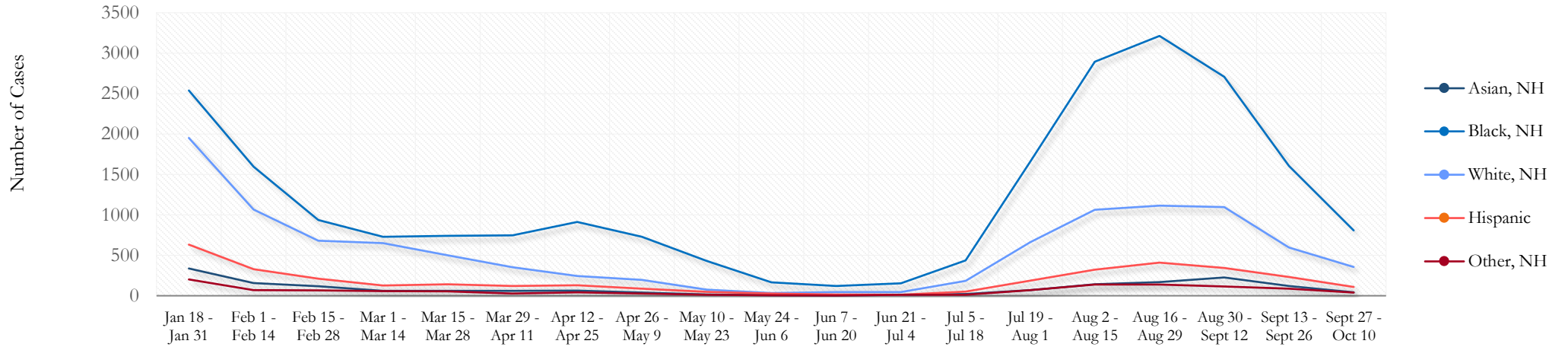
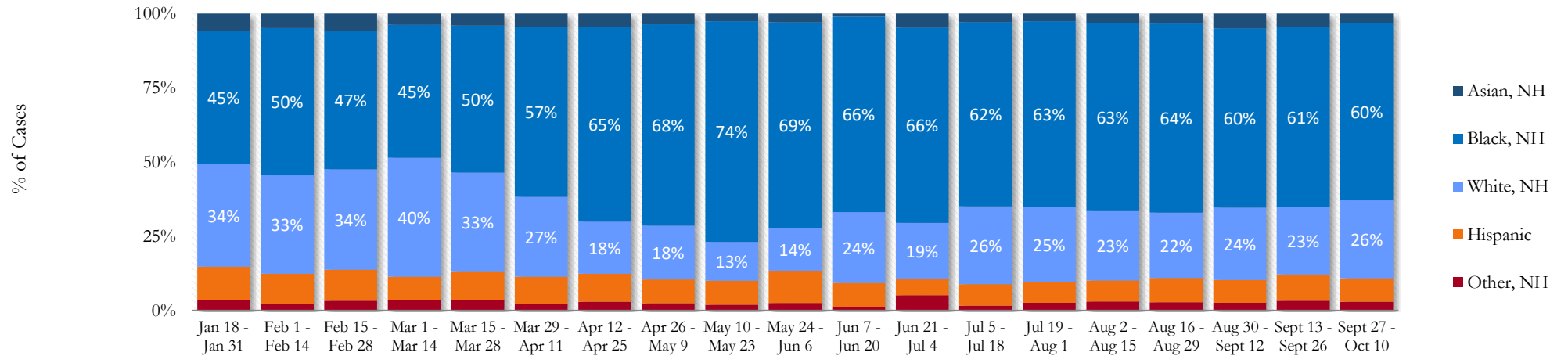


Fig. 20. Racial Distribution of Covid-19 Cases in Fulton County by 14-day periods



About 8% of all Fulton County COVID cases are missing data on patient race and ethnicity and in the past two weeks, about 24% of cases are missing this data. Percentages do not include the missing data and thus are subject to change as data are cleaned.

Fig. 22. Trends in Age Distribution of Covid-19 Cases in Fulton County by 14-day periods

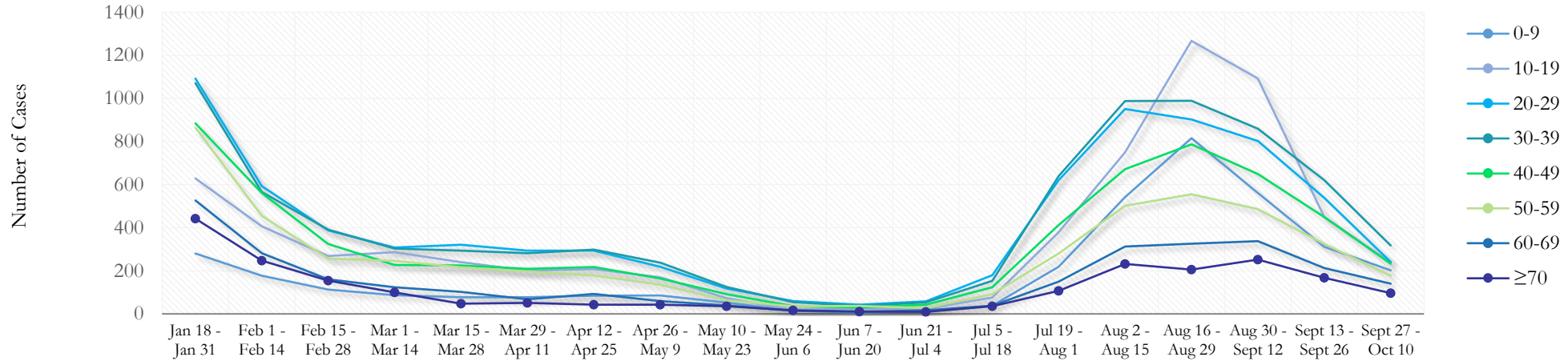
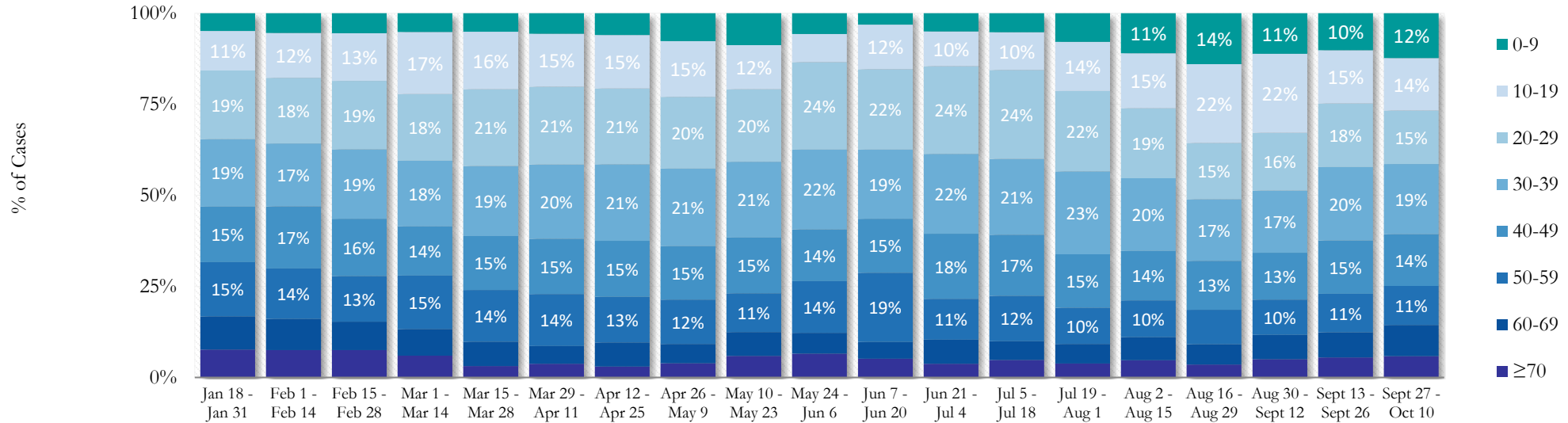


Fig. 23. Age Distribution of Covid-19 Cases in Fulton County by 14-day periods



In the most recent two weeks, 20-29 year olds and 30-39 year olds accounted for the majority of new cases. Value labels under 10% are not shown. Percentages do not include the missing data and thus are subject to change as data are cleaned.

GEORGIA

[Download Published Data](#)

VACCINES ADMINISTERED

ADMINISTERED

11,042,095

ADMINISTERED PER 100K

106,134

RESIDENTS VACCINATED

At Least One Dose

5,775,431

% At Least One Dose

56%

Fully Vaccinated

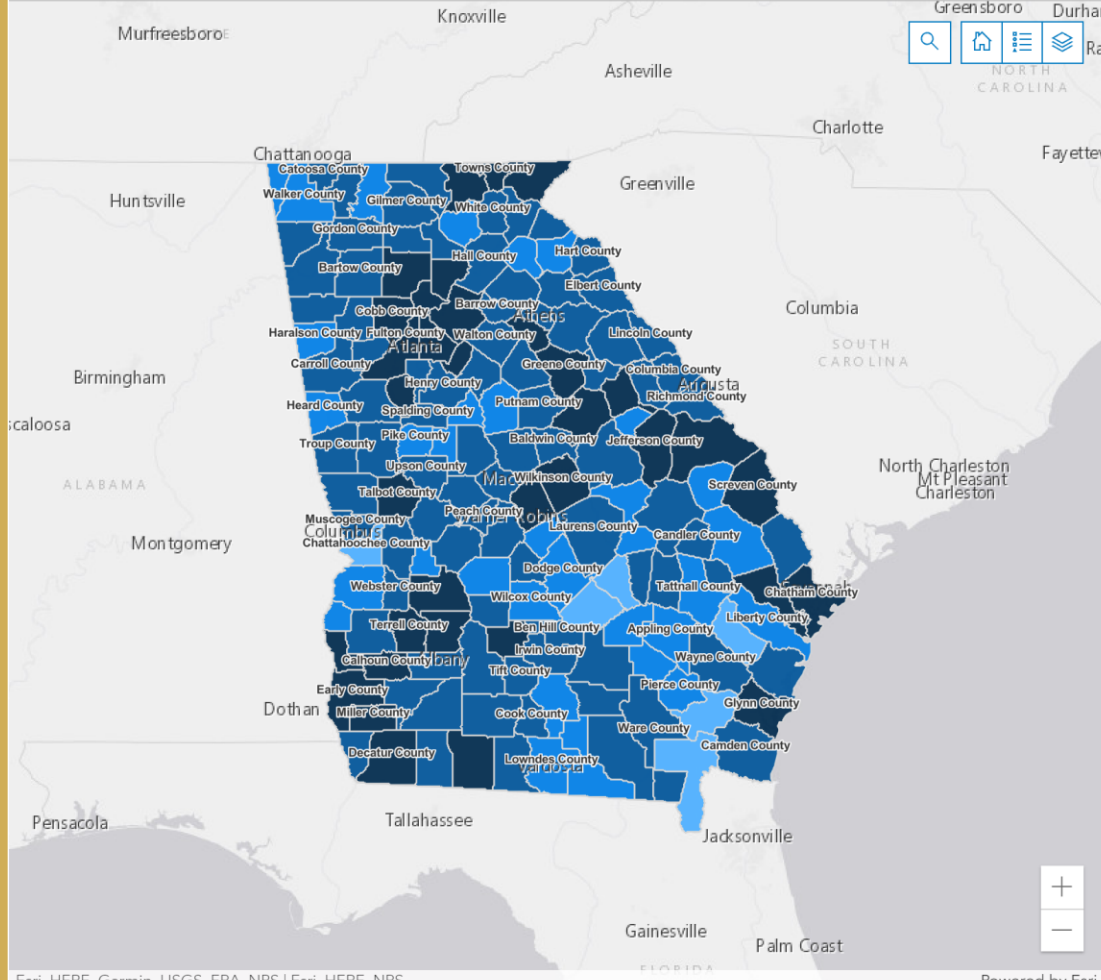
5,138,686

% Fully Vaccinated

49%

Data reported on 2021-10-22 08:34:07

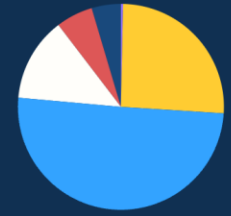
Residents with at least one dose by County (see [About Data](#) tab below)
PERCENT of residents with at least one dose is the default map. To view the COUNT of residents with at least one dose data, please use button in top right corner of map to select the respective layer.



Esri, HERE, Garmin, USGS, EPA, NPS | Esri, HERE, NPS Powered by Esri

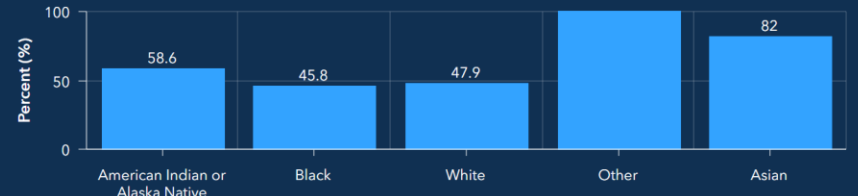
County: Vax 1+ County: Full Vax Tract: Vax 1+ Tract: Full Vax Manufacturer About Data Contents

Distribution of vaccine recipients with at least one dose by race



- American Indian or Alaska Native: 19,631
- Black: 1,482,265
- White: 2,911,894
- Other: 761,666
- Asian: 335,027
- Unknown: 264,948

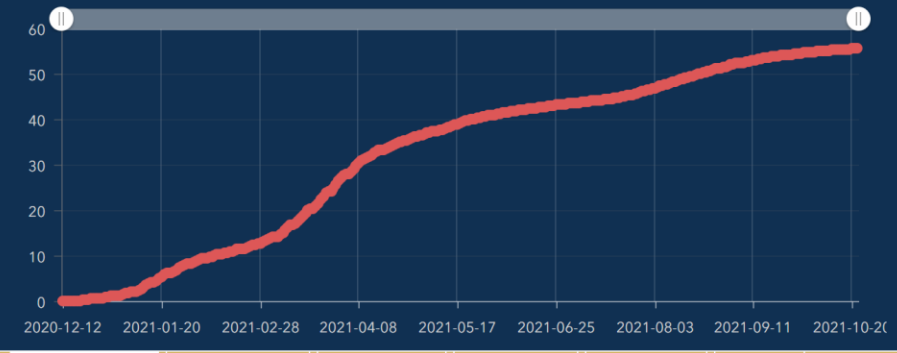
Percent of population with at least one dose by race



Sex Age **Race** Ethnicity

For the census tract demographic dashboard, click [here](#).
To download census tract demographic data, click [here](#).

Percent of residents with at least one vaccination by day first dose administered



RES %: Vac 1+ RES #: Vac 1+ RES % FULL RES # FULL ADM/100k ADM #

Fulton County
[Download Published Data](#)

VACCINES ADMINISTERED

ADMINISTERED
1,225,124

ADMINISTERED PER 100K
118,232

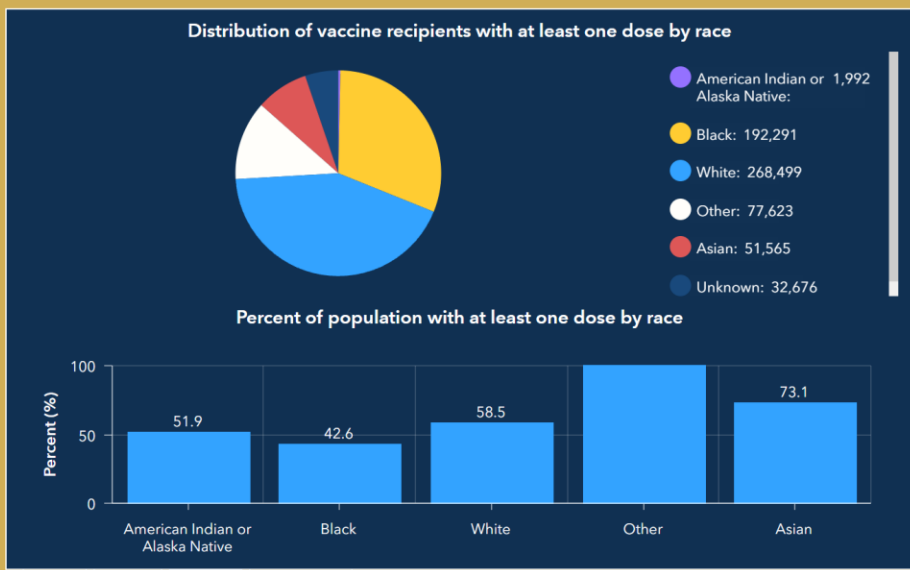
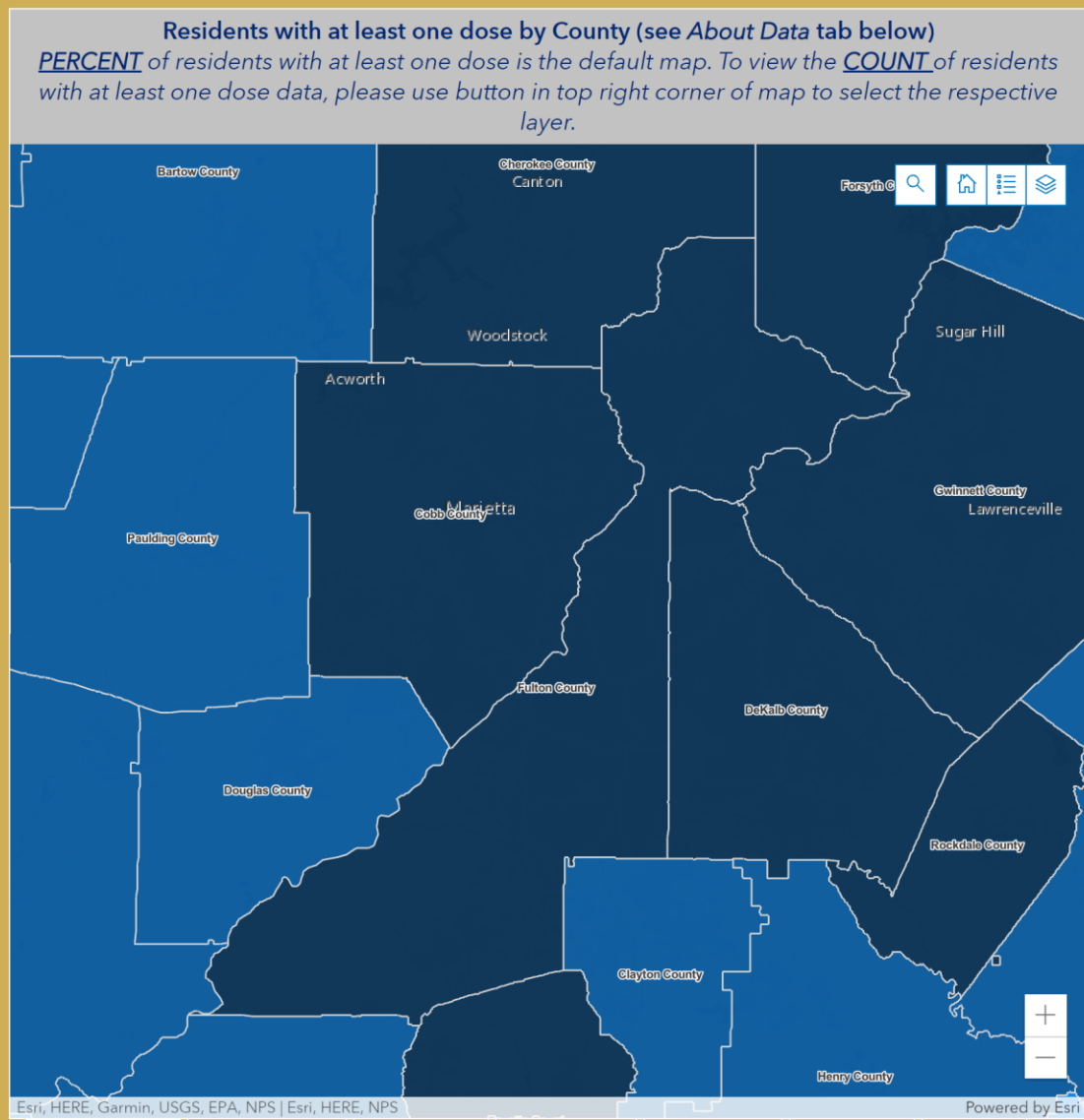
RESIDENTS VACCINATED

At Least One Dose
624,636

% At Least One Dose
60%

Fully Vaccinated
564,616

% Fully Vaccinated
54%



Sex | Age | **Race** | Ethnicity

For the census tract demographic dashboard, click [here](#).
To download census tract demographic data, click [here](#).

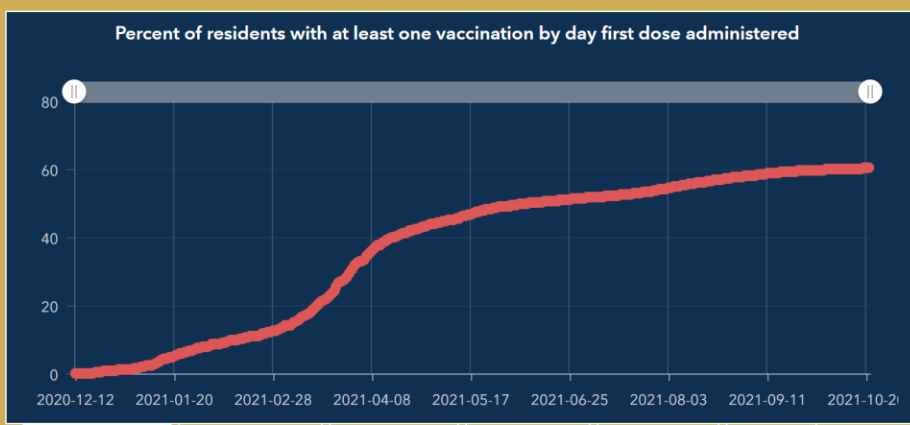


Fig. 2. Number of Residents with At Least One Dose By Age

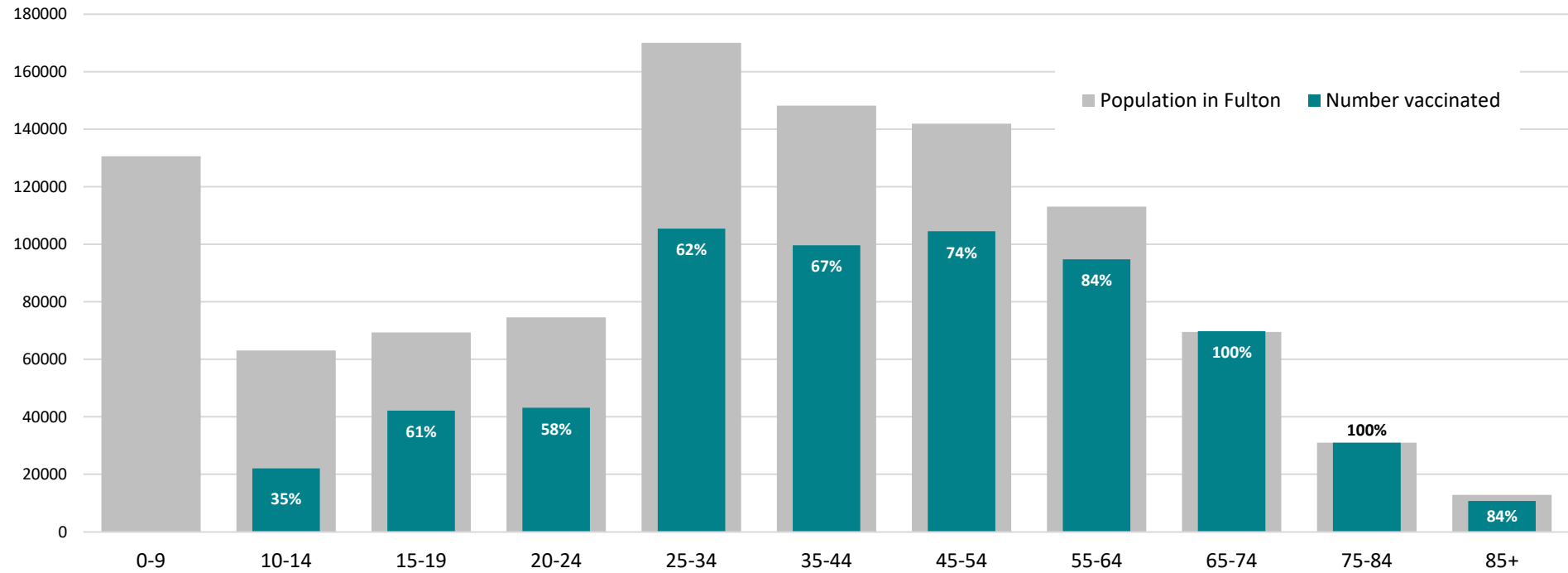


Table 1 - Race	Percent of Fulton Population ¹ (N = 1,021,902)	Percent of Racial Sub-Population With At Least One Dose
Black	44%	42%
White	45%	59%
Asian	7%	73%
American Indian or Alaska Native	<1%	52%
Other	4%	-
Unknown	-	-

Fig. 4. Number of Residents With At Least One Dose By Race

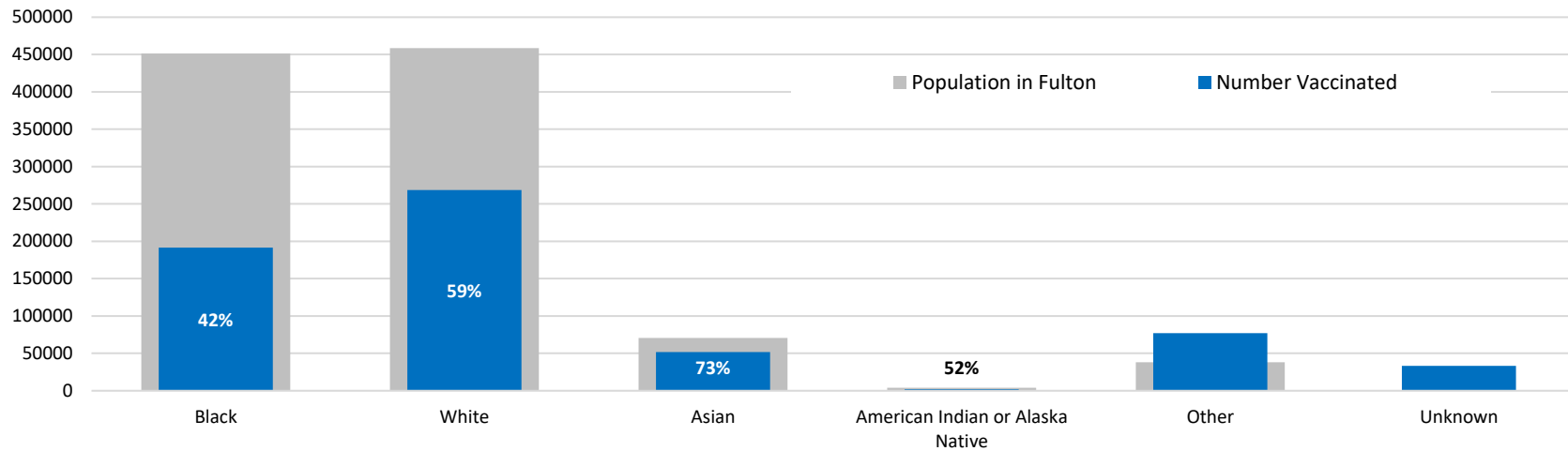
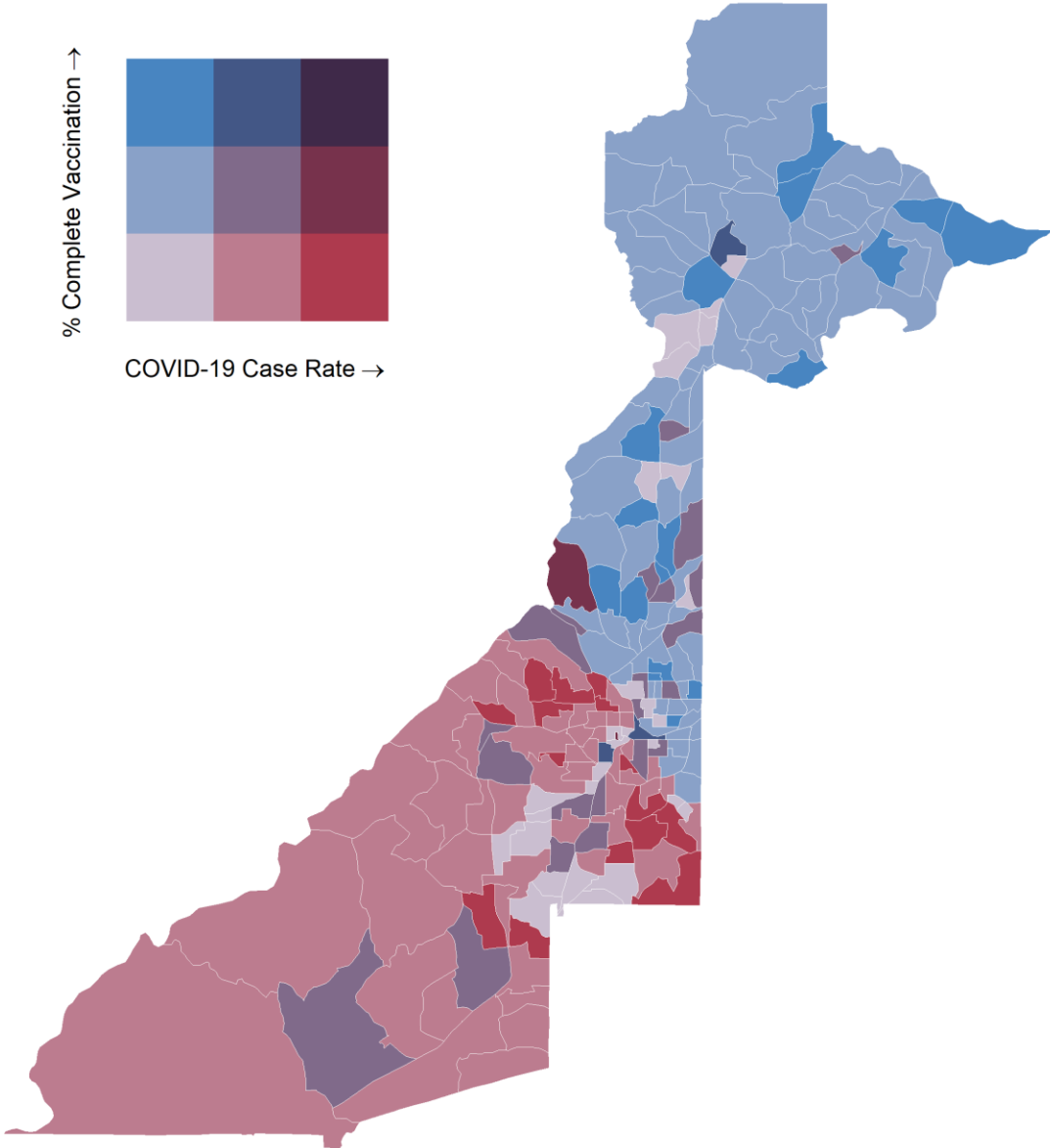


Fig. 9. Percent Complete Vaccination and COVID-19 Case Rate (per 100,000 population) by Census Tract, September 13 – October 10, 2021

How to interpret these colors: The darker the blue, the better. The upper most blue box indicates low COVID-19 case rates and high vaccination coverage. Red is not ideal as red indicates high COVID-19 case rates and low vaccination coverage. Colors in between indicate varying combinations of COVID-19 case rates and vaccination coverage. COVID-19 case rate reflects new COVID-19 cases diagnosed between September 13 and October 10, 2021 across Fulton County. Vaccination data from: <https://experience.arcgis.com/experience/3d8eea39f5c1443db1743a4cb8948a9c>



Nearly all COVID deaths and hospitalizations occurred among unvaccinated individuals

- Of the > 5.1 M **fully vaccinated** people in Georgia
 - **65,510 (1.28%)** have tested positive for COVID
 - **2,650 (0.05%)** were hospitalized for any reason
 - **806 (0.01%)** died from COVID
 - More **than 83%** of the breakthrough deaths occurred among those **>65 years old**
- Of the 5.61M **unvaccinated persons in Georgia**
 - **836,690 (15%)** have tested positive for COVID;
 - **38,528 (0.68%)** were hospitalized for any reason
 - **11,212 (0.19%)** died from COVID
 - **These proportions are almost 20X greater than those seen among the vaccinated**