



# QUARTERLY UPDATE

Atlanta  
City  
Council

CDHS  
Committee

May 11, 2021



@atlantabeltline



@atlantabeltline



@atlantabeltline



Proctor Creek as it runs  
through Chappell Road land



# AFFORDABLE HOUSING

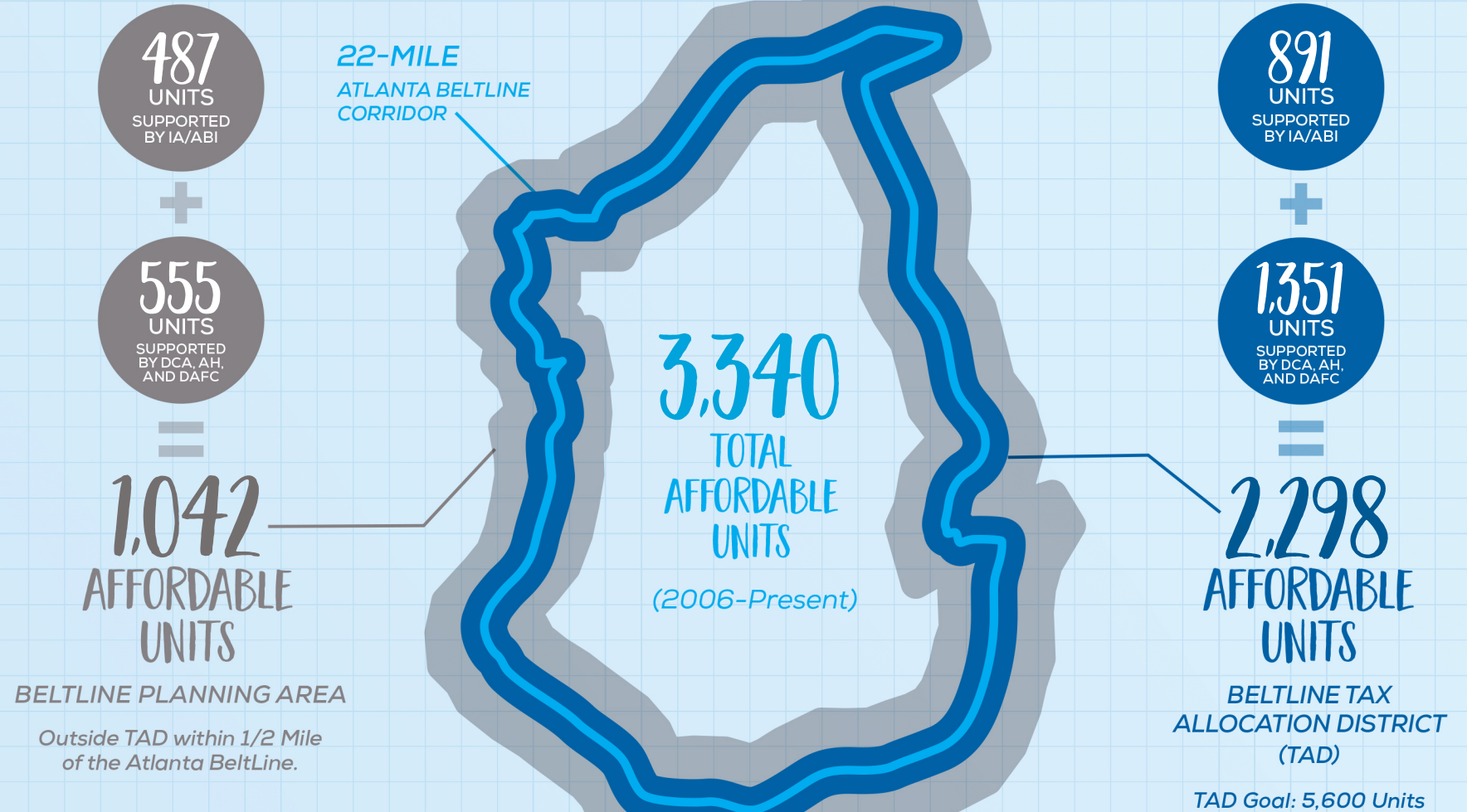
## AFFORDABLE UNITS CREATED/PRESERVED

915 affordable housing  
units in the pipeline

TAD and Planning Area  
boundaries are represented  
here for illustrative  
purposes only.

### CHART LEGEND >>

- ABI Atlanta BeltLine
- AH Atlanta Housing
- DAFC Development Authority of Fulton County
- DCA Department of Community Affairs
- IA Invest Atlanta





# AFFORDABLE HOUSING

## Atlanta BeltLine Legacy Resident Retention Program

- >128 homeowners applied since December
- 21 approved so far with more applications pending





# AFFORDABLE HOUSING

## Tripled housing land holdings in past year

- Madison Reynoldstown (2011) – 1 acre
- Murphy Crossing (2014, 18) – 20 acres
- Avon (2020) – 9 acres
- Garson (2020) – 3 acres
- Chappell (2021) – 31 acres



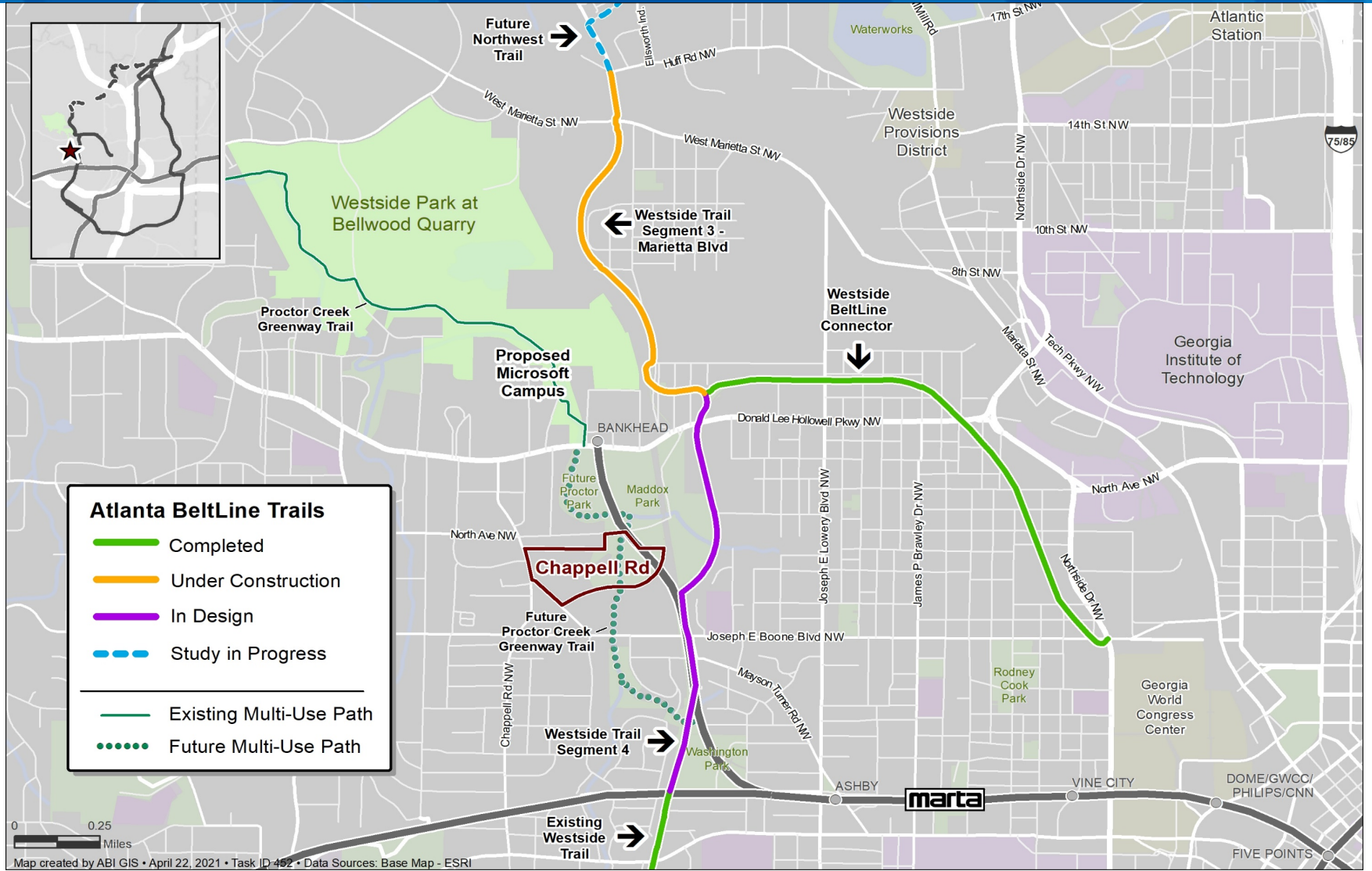
Chappell Road land



# CHAPPELL ROAD LAND ACQUISITION

## Largest affordable housing land purchase to date

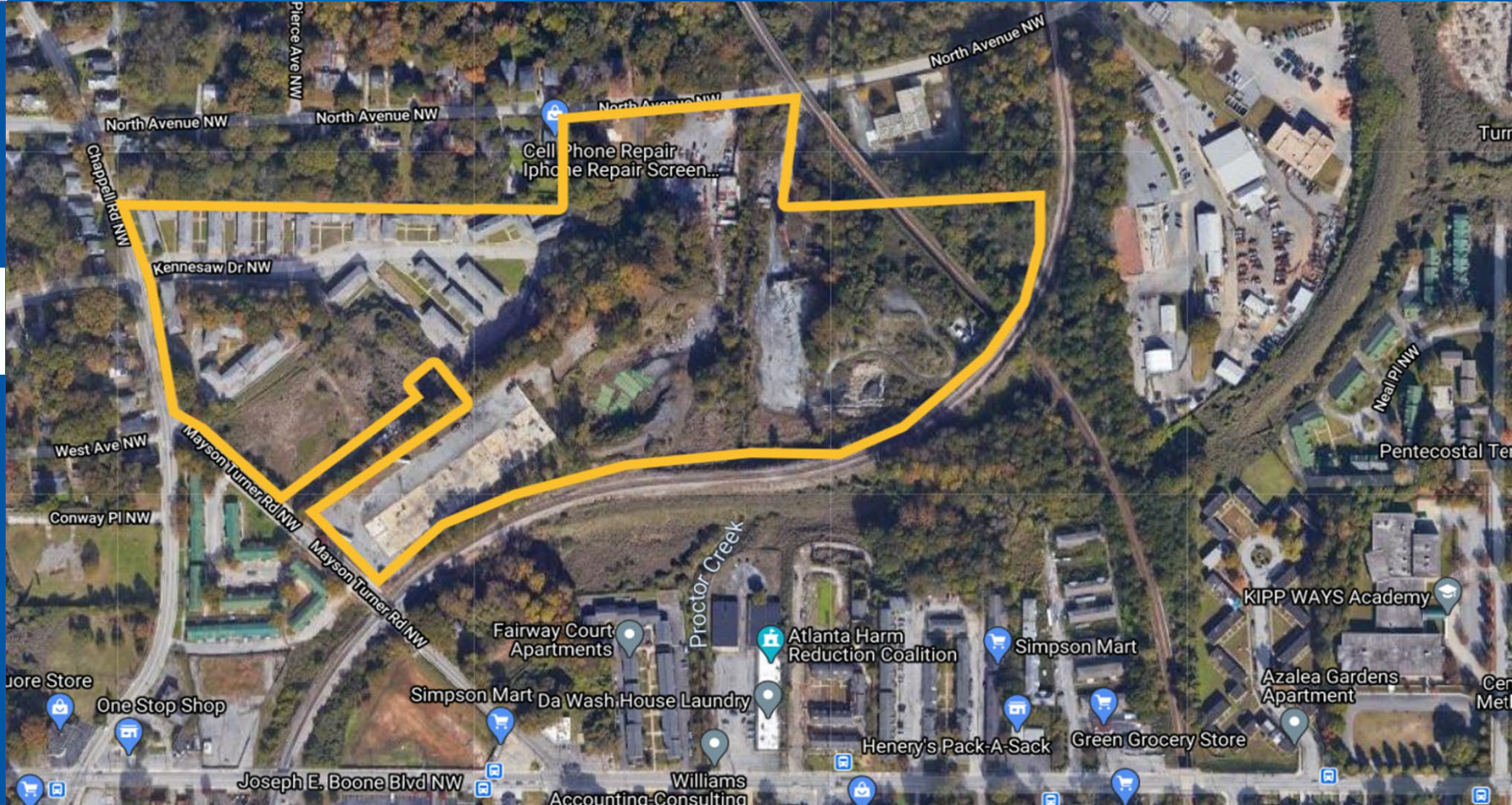
- Located in Bankhead/Historic Westin Heights
- +/-31 acres
- Regional transit and trail connectivity
- \$25.6M purchase price; below FMV (charitable contribution)
- Adjacent to 50+ acres of City land (DPR, DWM, ADOT)





# CHAPPELL ROAD LAND ACQUISITION

 Property

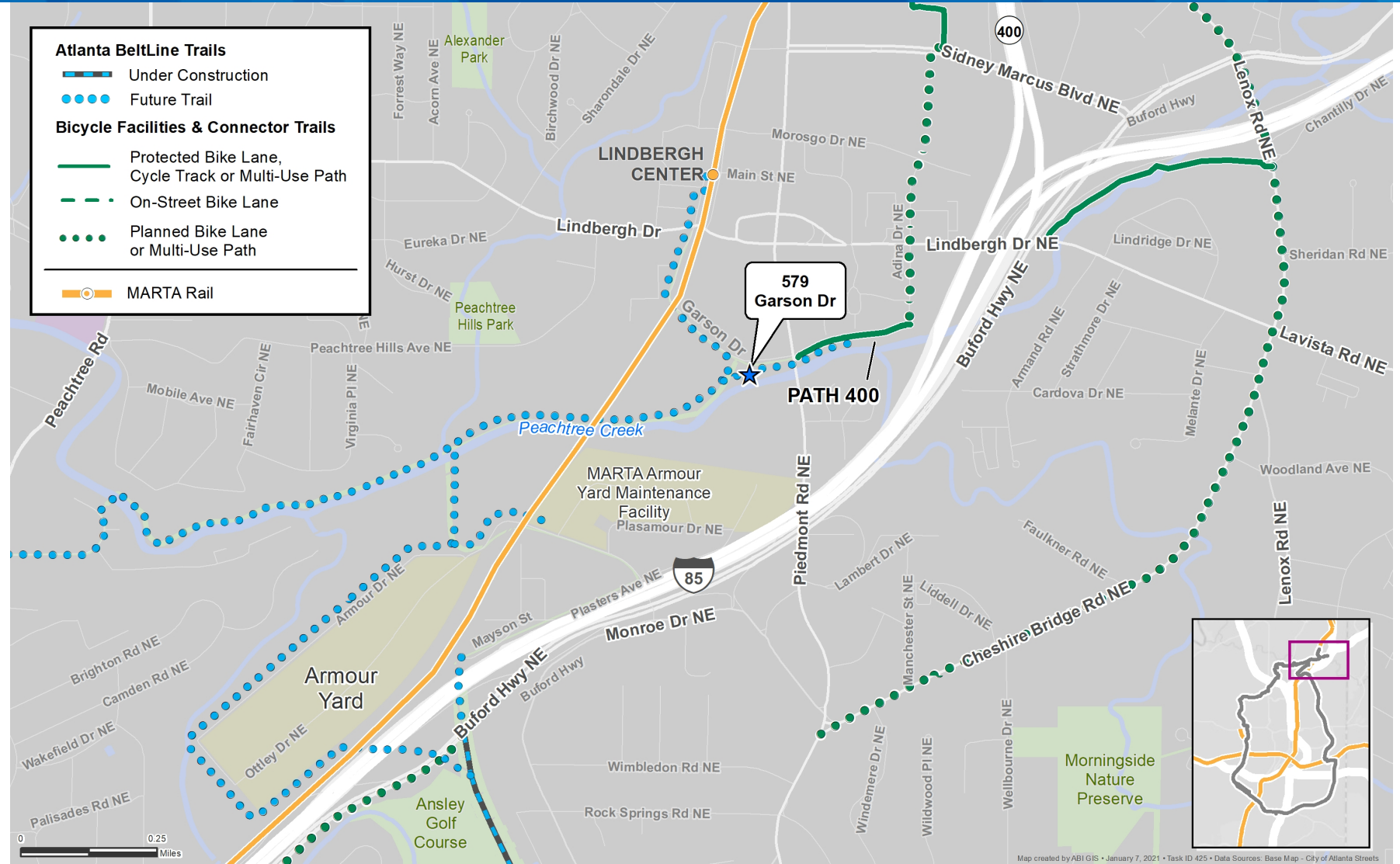




# GARSON DRIVE LAND ACQUISITION

## 579 Garson Dr.:

- Bringing affordability to Buckhead/Lindbergh
- Geographic diversity in land purchases
- Enabled with donation by Wells Fargo to Atlanta BeltLine Partnership





# MURPHY CROSSING

## RFP for Purchase/ Redevelopment Published

- Focus on sustainable living-wage jobs accessible to surrounding neighborhood residents; affordable housing; green space; innovative site design
- Community feedback incorporated



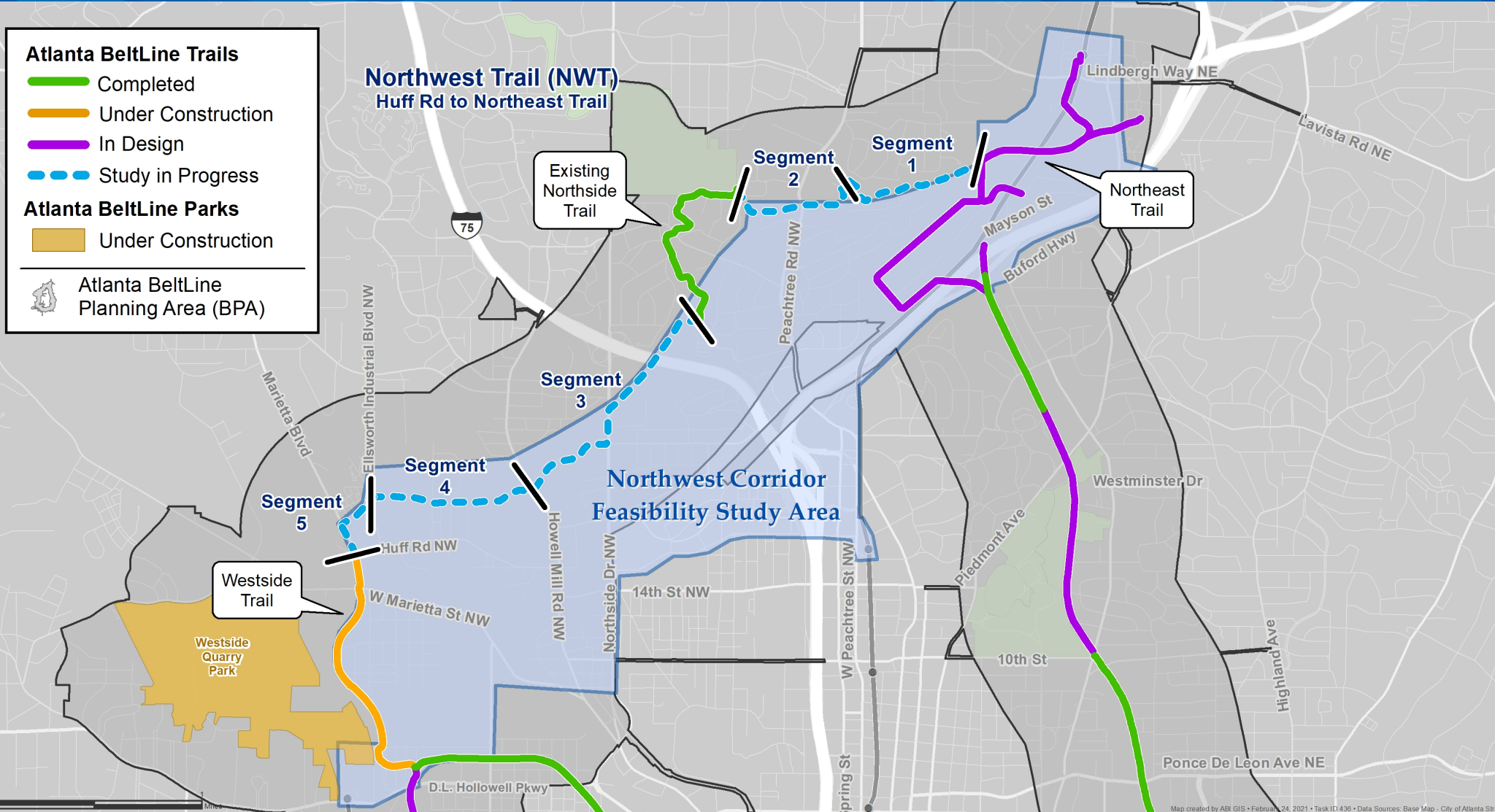




# TRAIL UPDATES

## Northwest Corridor Study

- ABI/PATH collaboration to deliver on expedited schedule
- PATH funding planning study to preserve ABI budget for design & construction
- May 24 community meeting





# TRAIL UPDATES

PATH Foundation  
grand opening of  
Westside BeltLine  
Connector  
(March)

- In collaboration with Atlanta BeltLine, Inc., Atlanta BeltLine Partnership, and Department of Parks & Recreation





# TRAIL UPDATES

## Westside BeltLine Connector

- 1.7 miles of new trail beginning at Northside Drive & Ivan Allen Jr. Blvd.
- Will intersect with Atlanta BeltLine Westside Trail east of Marietta Boulevard





# TRAIL UPDATES

## Northeast Trail (opened April)

- 1.7 miles of new trail – no lights or cameras, partial landscaping
- Accessible through ramp at Montgomery Ferry Road
- In collaboration with Georgia Power





# TRAIL UPDATES

## Westside Trail Segment 3

- Along Marietta Boulevard near Westside Park
- In collaboration with PATH Foundation





# COMMUNICATIONS INFRASTRUCTURE

## Duct bank + fiber

- Creation of a smart city corridor
- 15.8 miles of underground dark fiber and wireless infrastructure
- In partnership with eX<sup>2</sup> Technology





# QUESTIONS



"Once Divided, Reunited"  
Exhibition in Westview