



Georgia Department of Transportation

I-85





DOT-CAM-143
 R 13/BUFORD HWY AT PIDMONT



Thu, Mar 30 at 10:58 PM
 CAM-143 - SR 13 BUFORD HWY AT PIEDMONT
 2017 GDOT - <http://511ga.org>





Georgia DOT – Transportation Management Center





March 31st Press Conference





Demolition of Collapsed Span - March 31, 2017

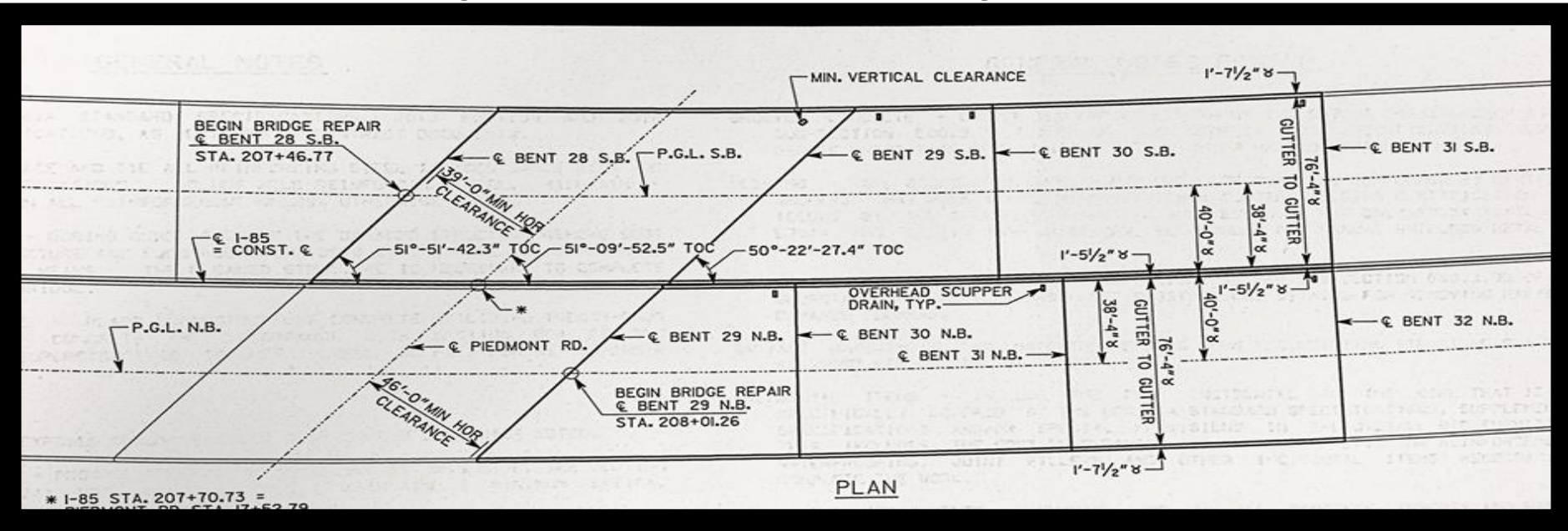




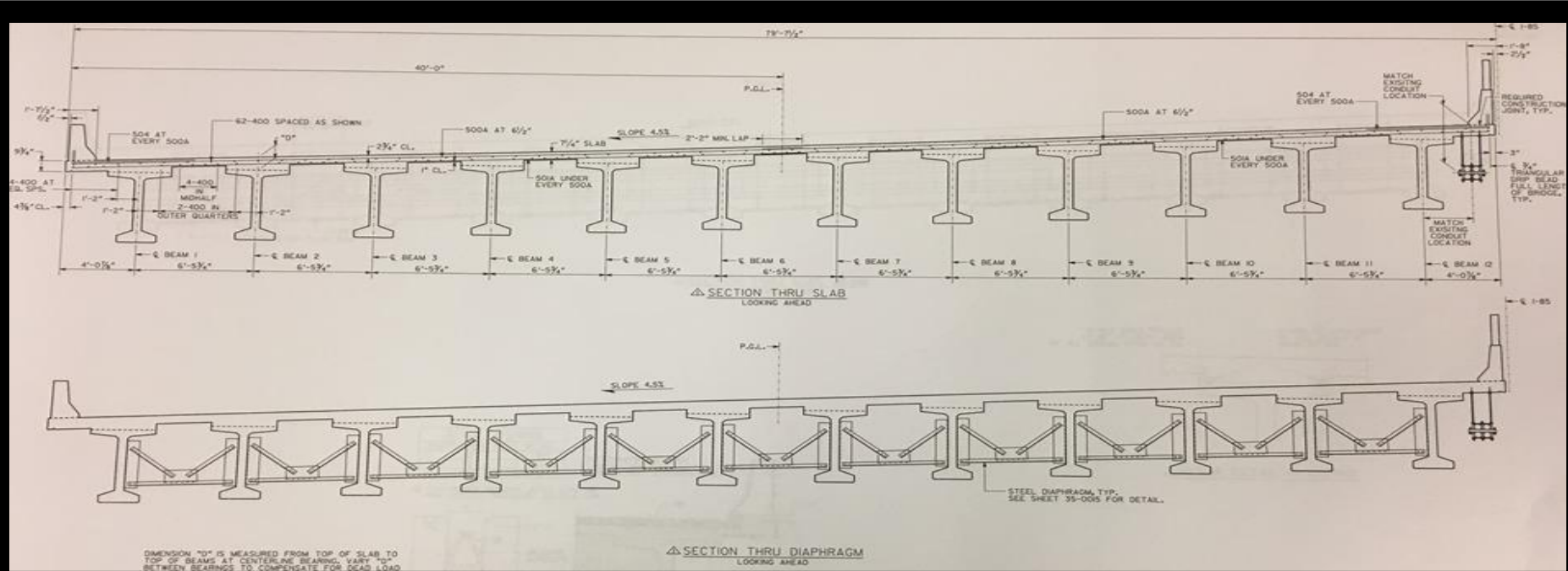




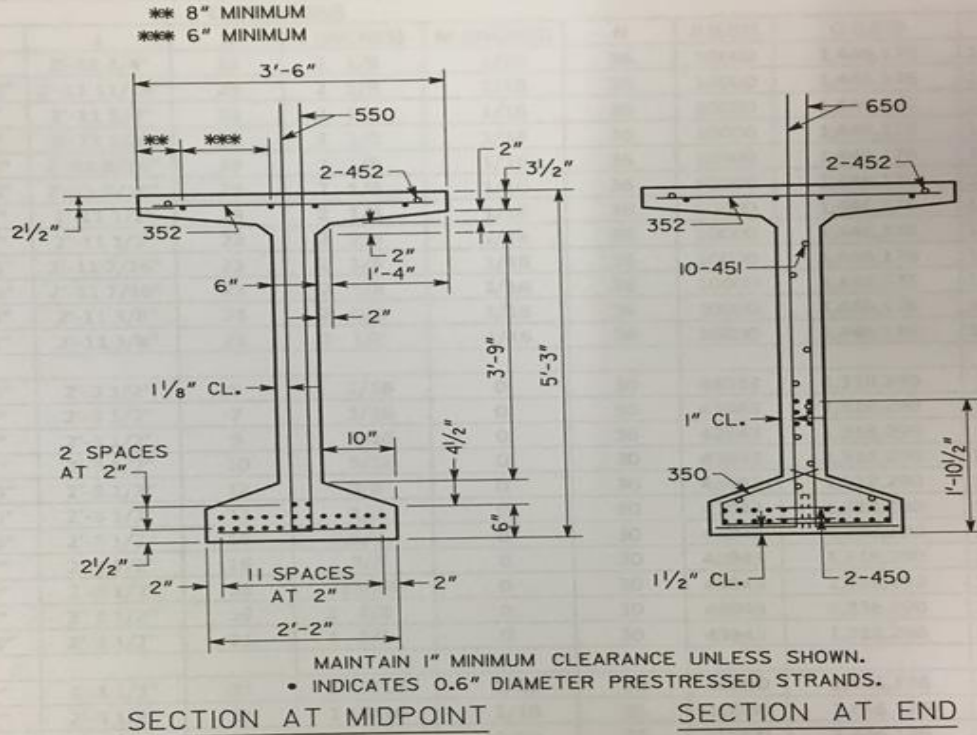
6 Spans to be replaced



Super Structure Section



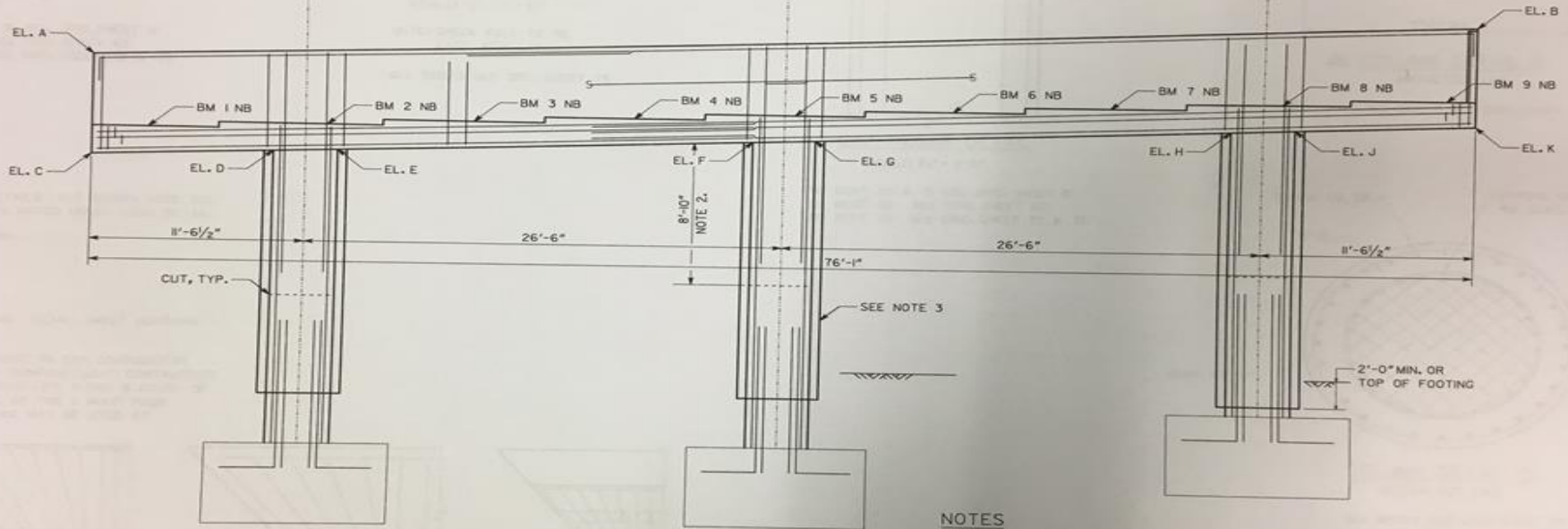
Bulb Tee Beams



SB SPAN 29

NB SPAN 29 - BEAMS 1 THRU 5

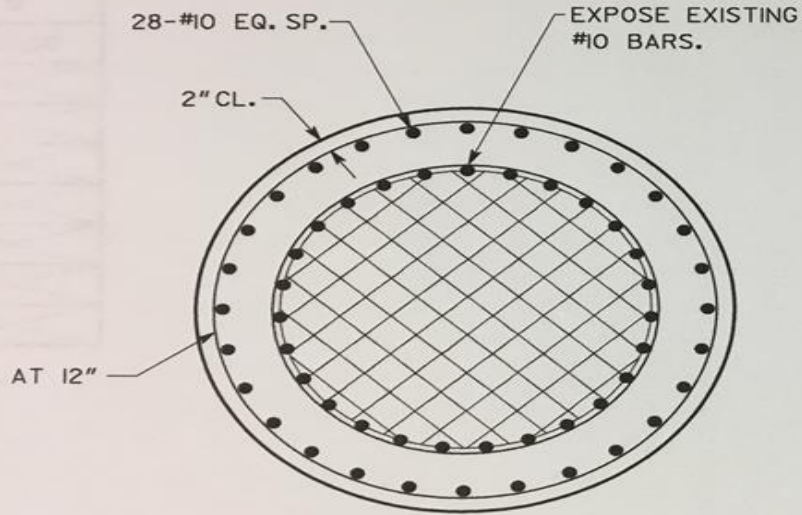
Sub Structure



NOTES

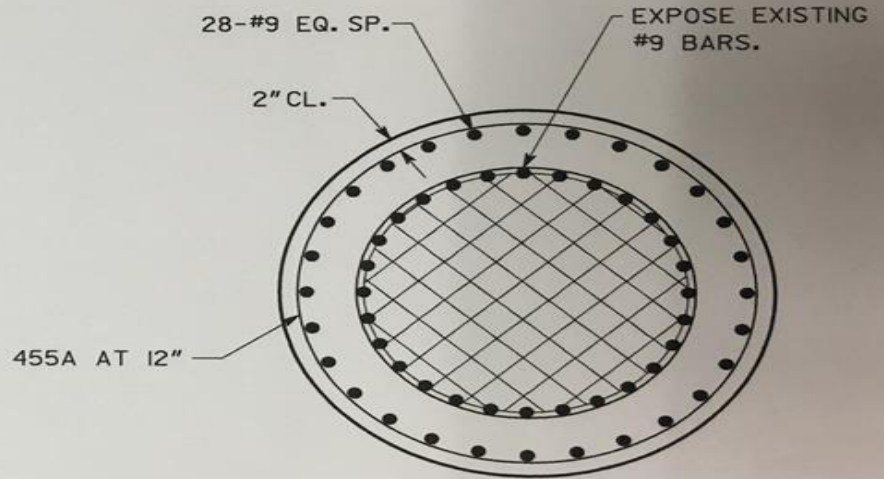
1. REMOVE CAP IN ITS ENTIRETY.
2. REMOVE EACH COLUMN BELOW CAP.

Column Retrofit



COLUMN DETAIL 5
BELOW CUT LINE

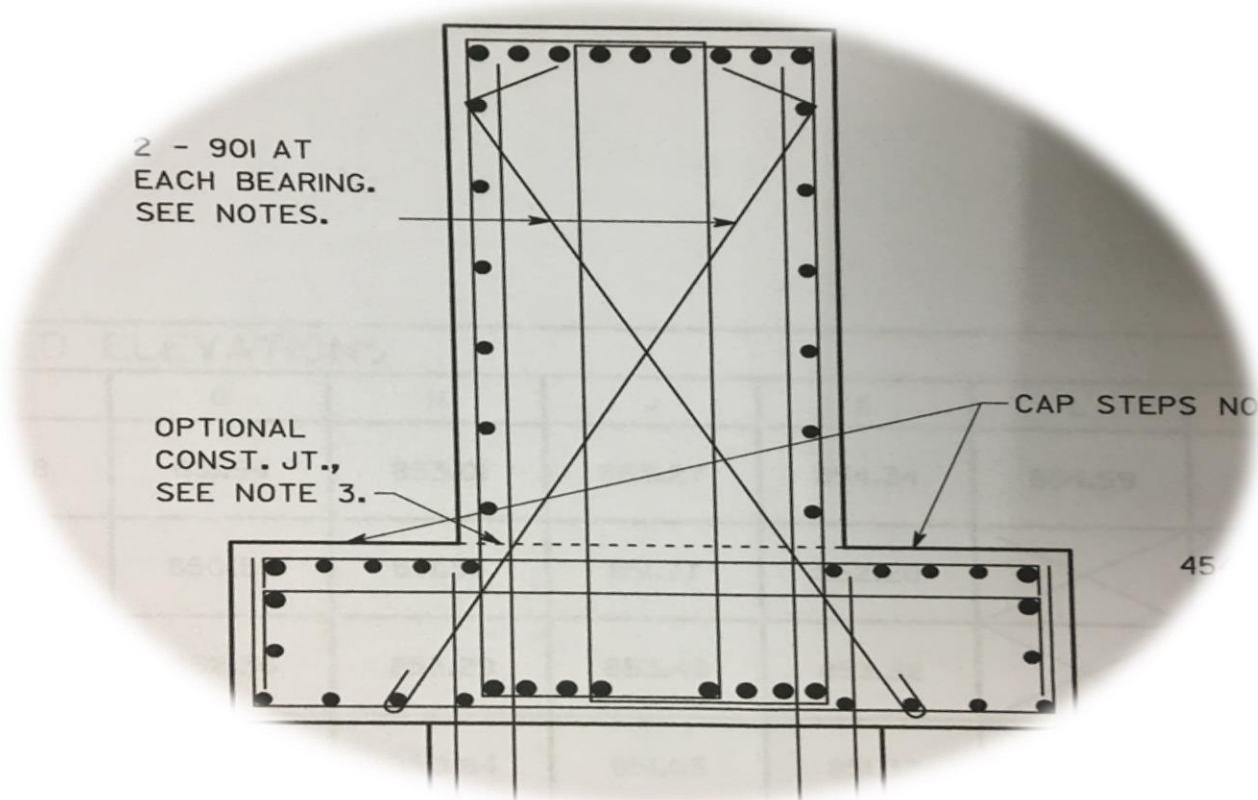
ALL BENTS SEE ORIG. SHEET 78



COLUMN DETAIL 6
BELOW CUT LINE

ALL BENTS SEE ORIG. SHEET 78

Inverted T Cap

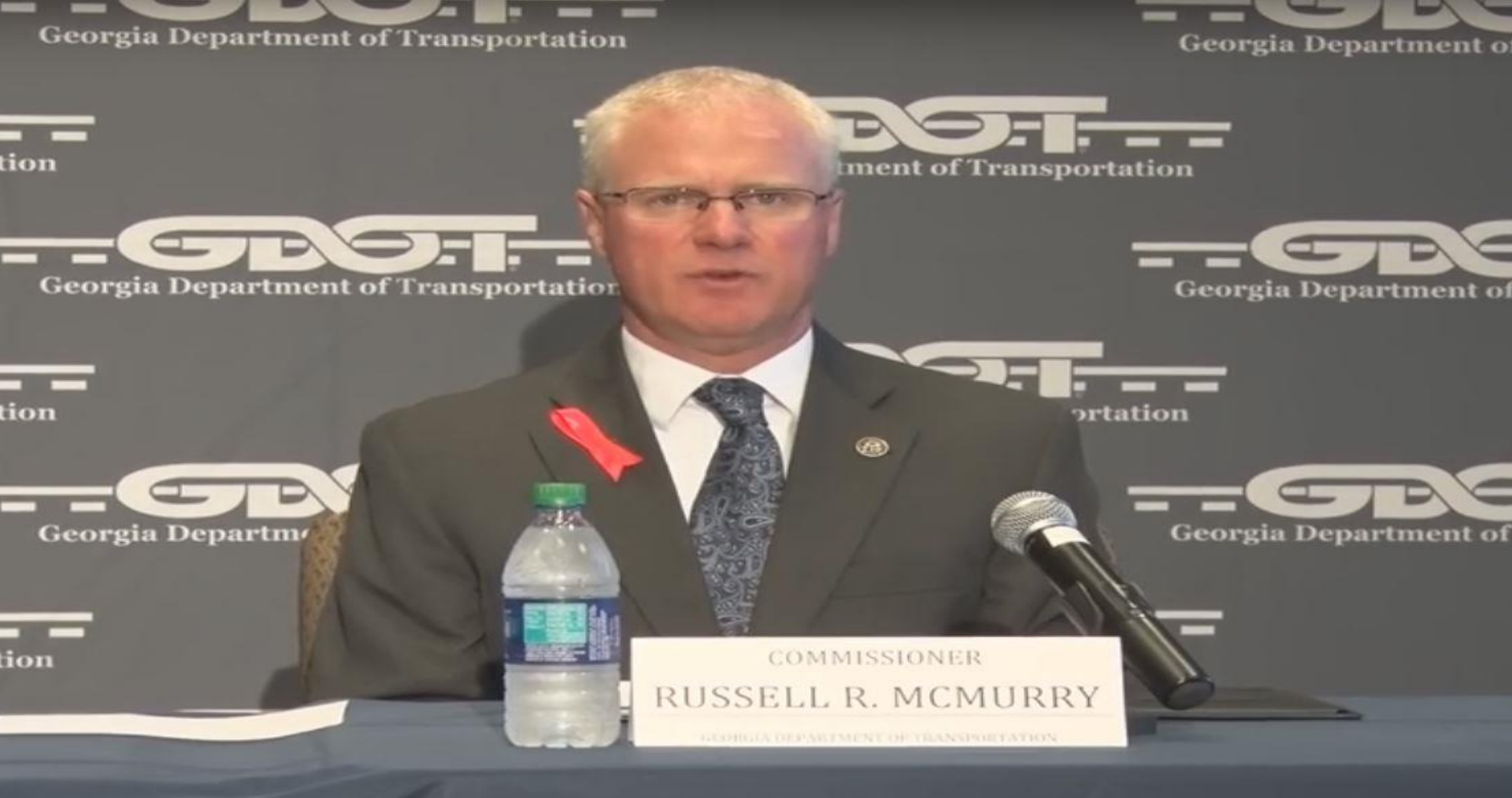




DAVE TAPER

AMERICAN
EST. 1977

YAIL



Press Conference – April 4, 2017





Removal of Span over Piedmont Road



Removal of Span over Piedmont Road











TO
400 NORTH
LEFT 1 MILE

85 NORTH
Greenville
EXIT 3/4 MILE

KOBELCO

EXIT

THEATRE

WORKER

2202888

30

30













Interstate 85 Bridge Rebuild – Thursday afternoon, April 6, 2017



Interstate 85 Bridge Rebuild – Tuesday afternoon, April 11, 2017



Removal of Existing Dowels



Putting it simple
with each.

Link-Belt

500

500







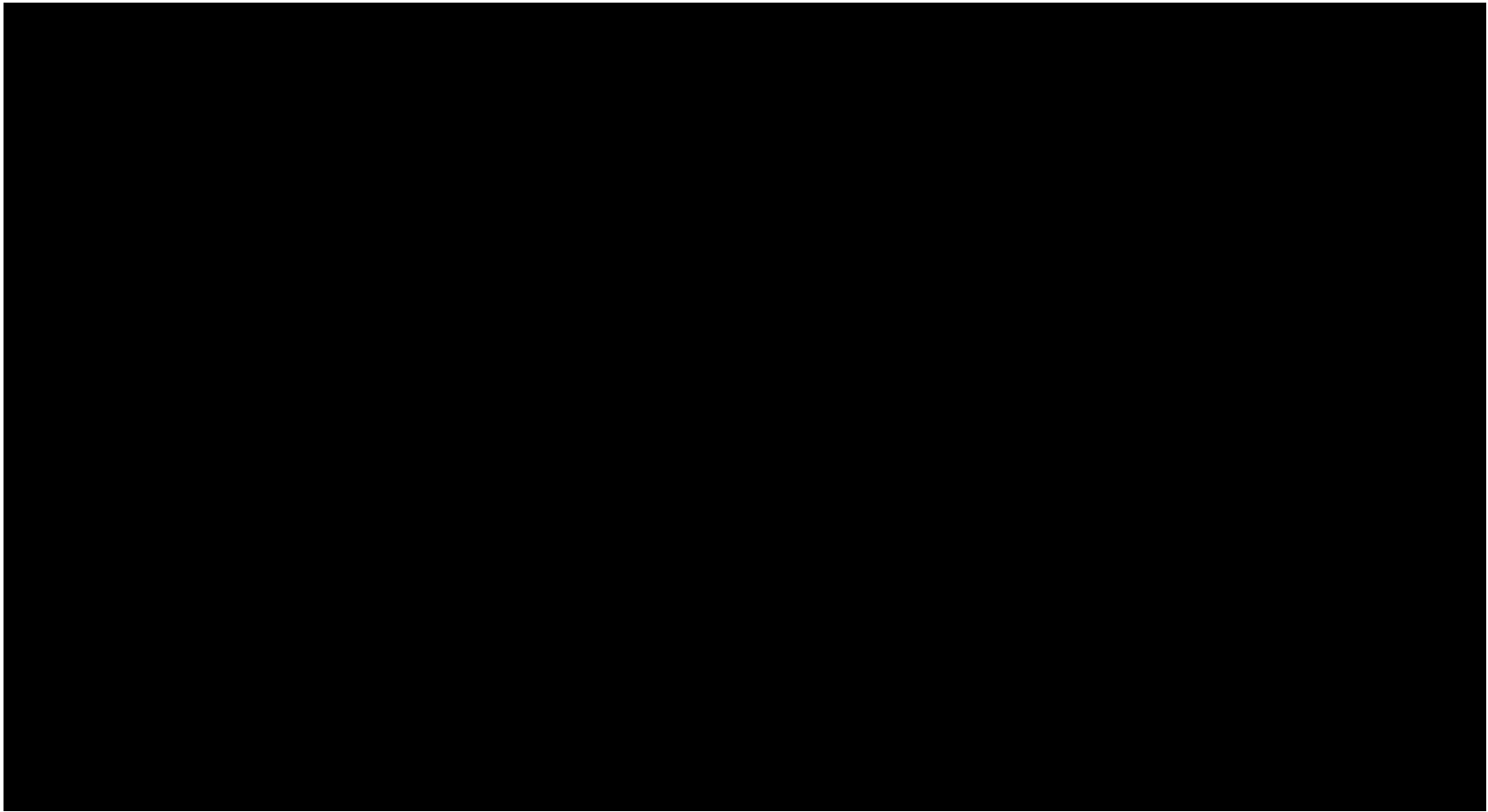
alps

42378 CRGR3
CR60-101-17 P3

860
861

860
861

120







REBUILD I-85

A TEAM EFFORT