



**YOUR
POSSIBILITIES ARE
ENDLESS**

AeroATL Model Mile Alignments *Atlanta*

City Council (Transportation Committee) Briefing

December 16, 2020



INTRODUCTION / PURPOSE

In 2018, the AeroCIDs, in cooperation with the Aerotropolis Alliance completed the **AeroATL Greenway Plan**. This document identified a large network of trails that would connect the many communities of South Metro Atlanta.

In 2019, the AeroCIDs applied for and received a **Livable Centers Initiative (LCI) grant** from the Atlanta Regional Commission. Through a competitive selection process, POND was selected to complete this study.

This current grant will focus on developing feasibility studies for **seven model mile communities**. This will include defining a preferred route designed with supporting design concepts, cost estimates, and a recommended funding strategy.

Each of the seven communities defined their model mile project area, which served as the starting point for this study.

OVERVIEW OF GOALS + CRITERIA

Project Goals

Develop a preferred model-mile concept.

Safety

Include pedestrian facilities and traffic calming elements to improve safety along the corridor for all users.

Mobility

Establish a model mile greenway that connects Campbellton Road to Cascade Heights Business District.

Equity

Incorporate public art, safe gathering spaces, and interpretive opportunities to tell the story of Adams Park.

EXISTING CONDITIONS



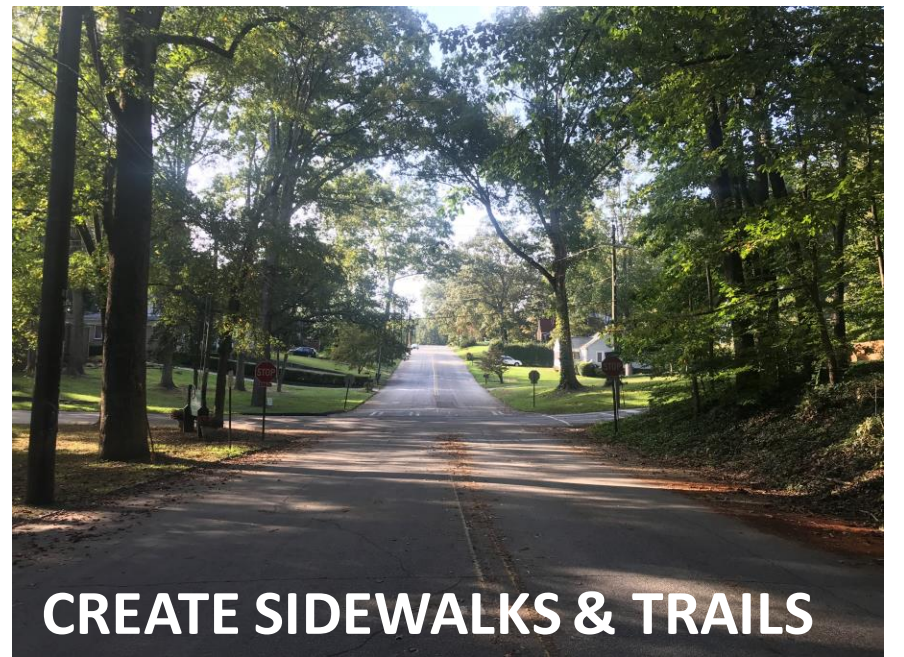
MEANINGFUL DESTINATIONS



UTILIZE THE GOLF COURSE

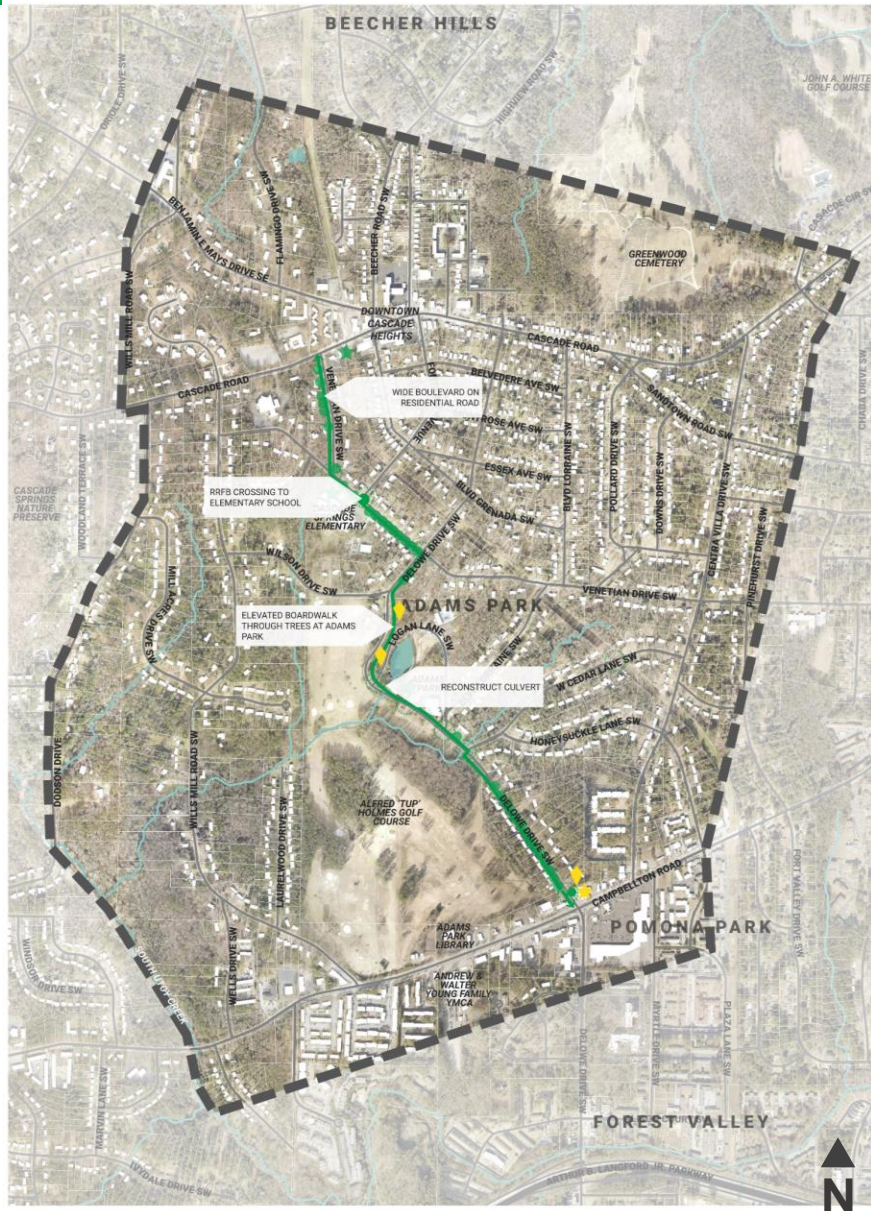


PRESERVE & ENHANCE THE HISTORY OF THE NEIGHBORHOOD

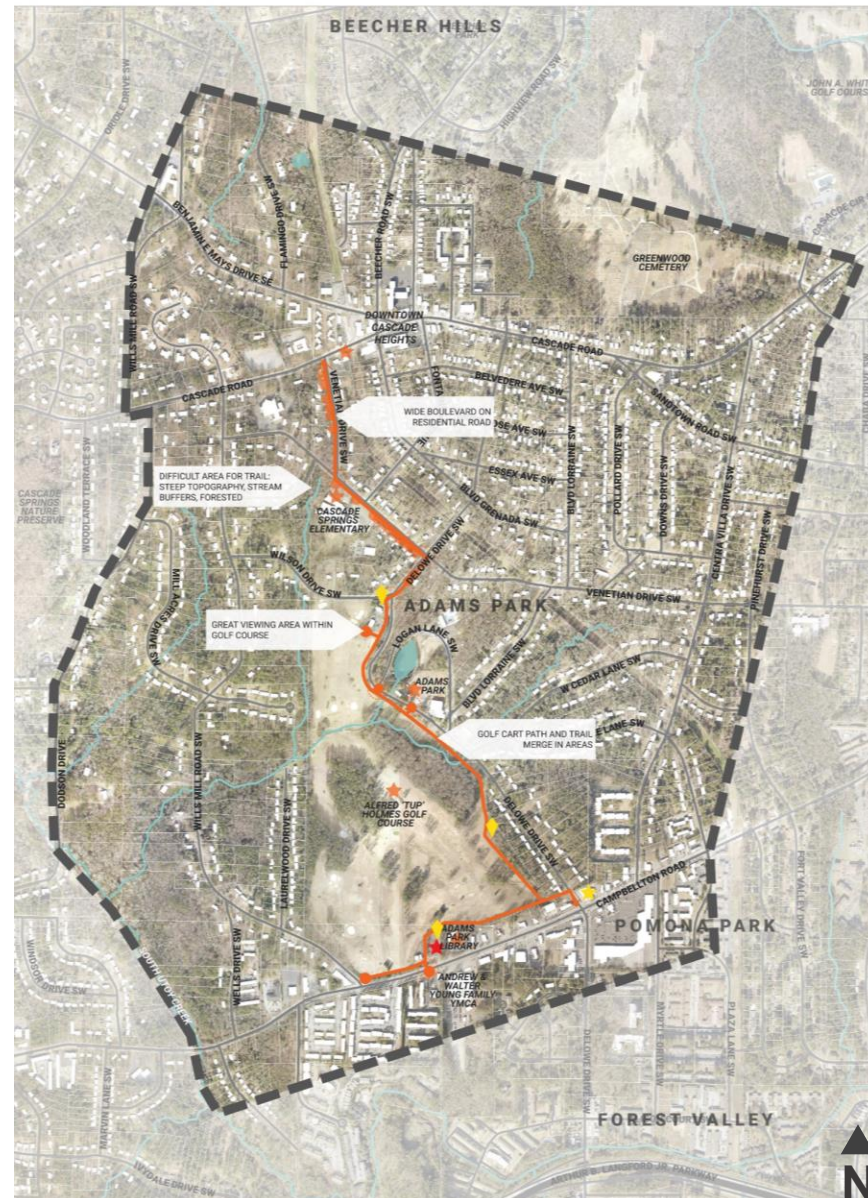


CREATE SIDEWALKS & TRAILS

REDEFINING DELOWE










BOOK TO BAR



city of atlanta
redefining delowe
trail alignment

city of atlanta
book to bar
trail alignment

	city of atlanta redefining delowe trail alignment	city of atlanta book to bar trail alignment
 CONFLICT POINTS	35 DRIVEWAYS 7 INTERSECTIONS	20 DRIVEWAYS 6 INTERSECTIONS
 LENGTH OF TRAIL	6,920 LINEAR FEET / 1.31 MILES	9,580 LINEAR FEET / 1.81 MILES
 CONNECTIONS	3 NEIGHBORHOODS 2 COMMERCIAL DISTRICTS 2 CIVIC 6 TRANSIT	3 NEIGHBORHOODS 2 COMMERCIAL DISTRICTS 2 CIVIC 7 TRANSIT
 ENVIRONMENTAL IMPACT	MODERATE STREET TREES IMPACTED	MINIMAL STREET TREES IMPACTED
 ROW IMPACTS	17 PROPERTIES	9 PROPERTIES
 OFF-ROAD VS ON-ROAD TRAIL	80% TRAIL ON ROAD	50% TRAIL ON ROAD
 INFRASTRUCTURE IMPACTS	UPGRADE STORMWATER INFRASTRUCTURE RELOCATE UTILITIES NARROW ROADWAYS	UPGRADE STORMWATER INFRASTRUCTURE RELOCATE UTILITIES NARROW ROADWAYS

CRITERIA MATRIX

- Compares trail alignments
- Seven different criteria
- Helps determine trade-offs for each trail alignment
- Incorporates quantitative data to make an informed decision regarding the preferred alignment

PREFERRED APPROACH: SAFETY



- Complete sidewalk gaps along east side of Delowe Drive between Campbellton Road and Venetian Drive
- Create a chicane along two segments of Delowe Drive
- Install cobblestone in pavement along curve in Delowe Drive
- Reconfigure intersections at Cedar Lane/Delowe Drive and Poole Road/Venetian Drive



PREFERRED APPROACH: MOBILITY



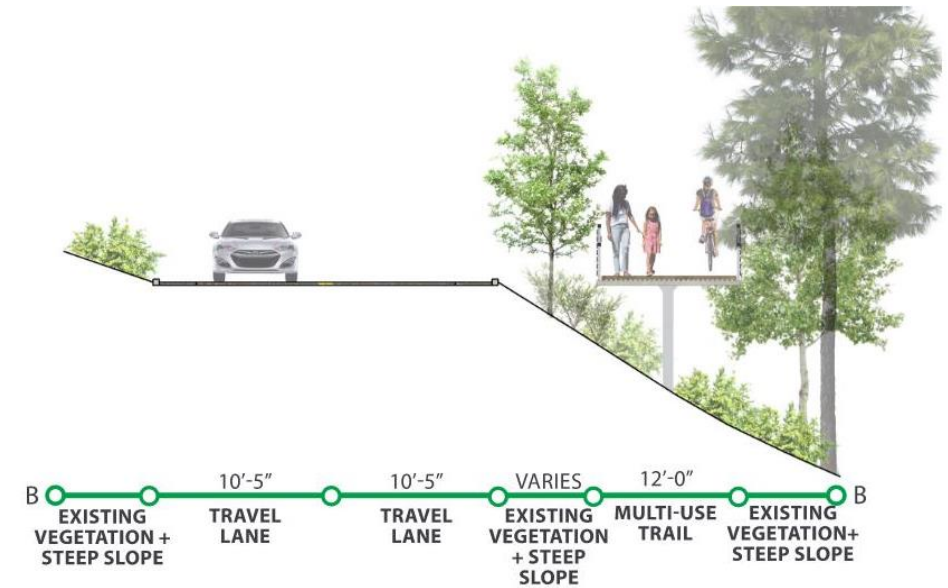
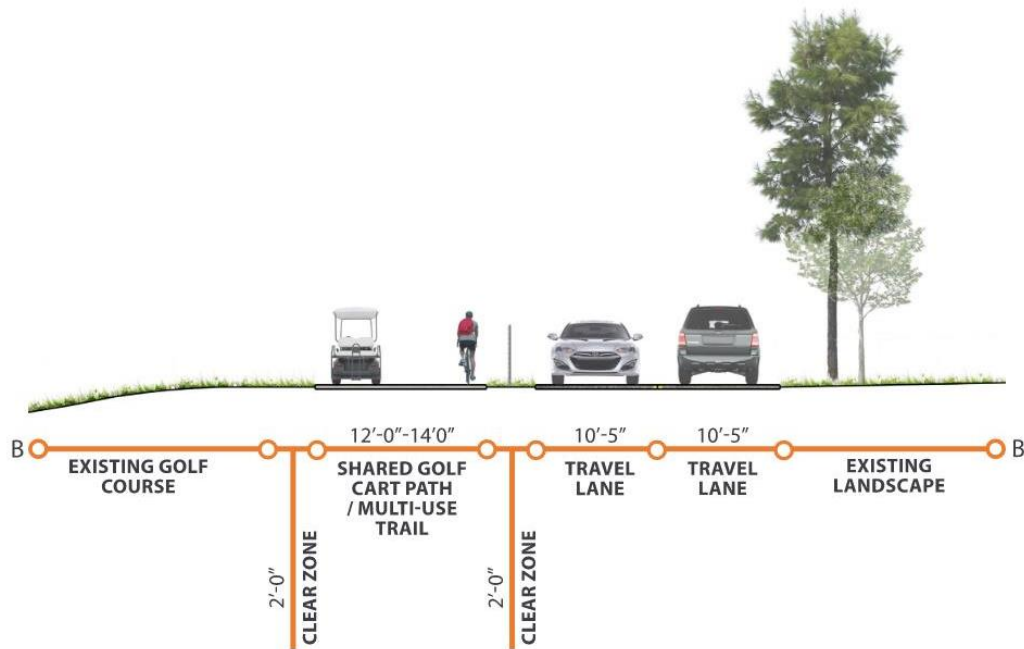
- Multi-Use Trail: 1.65 miles
- Trail has potential of continuing North and South:
 - Towards MLK Drive
 - Towards Connally Drive
- Three properties affected
- Design elements include:
 - Concrete surface trails
 - Raised boardwalk trail
 - Improved sidewalks & connectivity
 - Two identified trailheads
 - One memorial/interpretive placemaking space

TRAIL CROSS-SECTIONS

ON DELOWE DRIVE AT THE GOLF COURSE



ON DELOWE DRIVE LOOKING NORTH, ADAMS PARK EAST



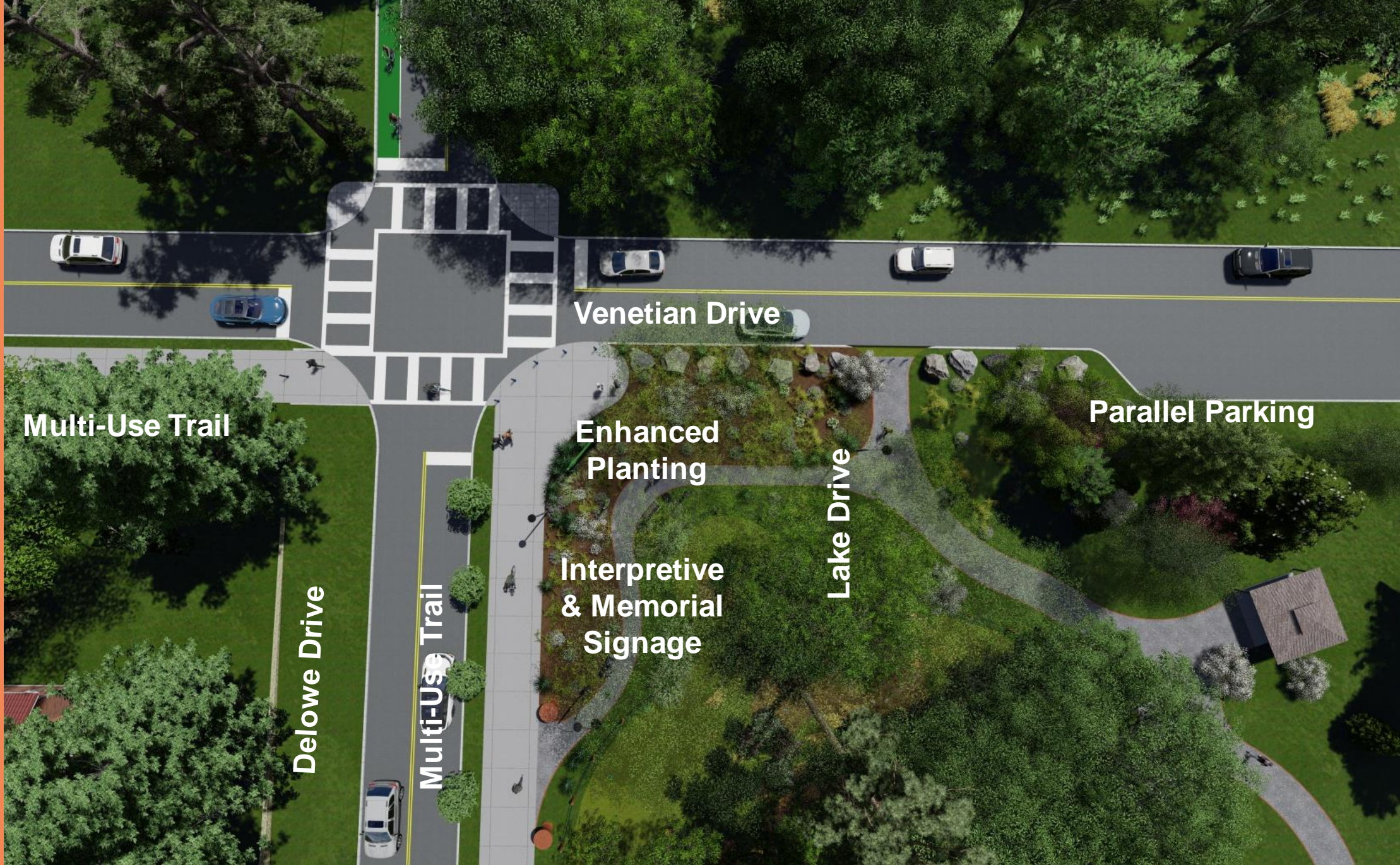
PREFERRED APPROACH: EQUITY



- Celebrate Adams Park entry with redesign
- Create safe, trailhead locations that enhance community services and offer places for community gatherings
- Introduce art along the corridor that is inspired by the stone work around Adams Park
- Interpret history of Adams Park in association with the public art



TRAILHEAD



Multi-Use Trail

Delowe Drive

Multi-Use Trail

Interpretive
& Memorial
Signage

Enhanced
Planting

Lake Drive

Venetian Drive

Parallel Parking

TRIALEAD



TRAILHEAD



TRAILHEAD



COST SUMMARY

Project Costs

Safety (Sidewalks, Traffic Calming):	\$850,000
Mobility: Multi-Use Trail (Campbellton Road to Cascade Road):	\$6,375,000
Equity: (Placemaking):	\$250,000

Project Costs Include:

- Construction costs
- Rights-of-way and easement acquisition
- Utilities relocations and adjustments
- 20% contingency fee
- Design and engineering fees
- Construction engineering and inspection fees

Important to Remember:

Materials and costs will be refined during preliminary design process