

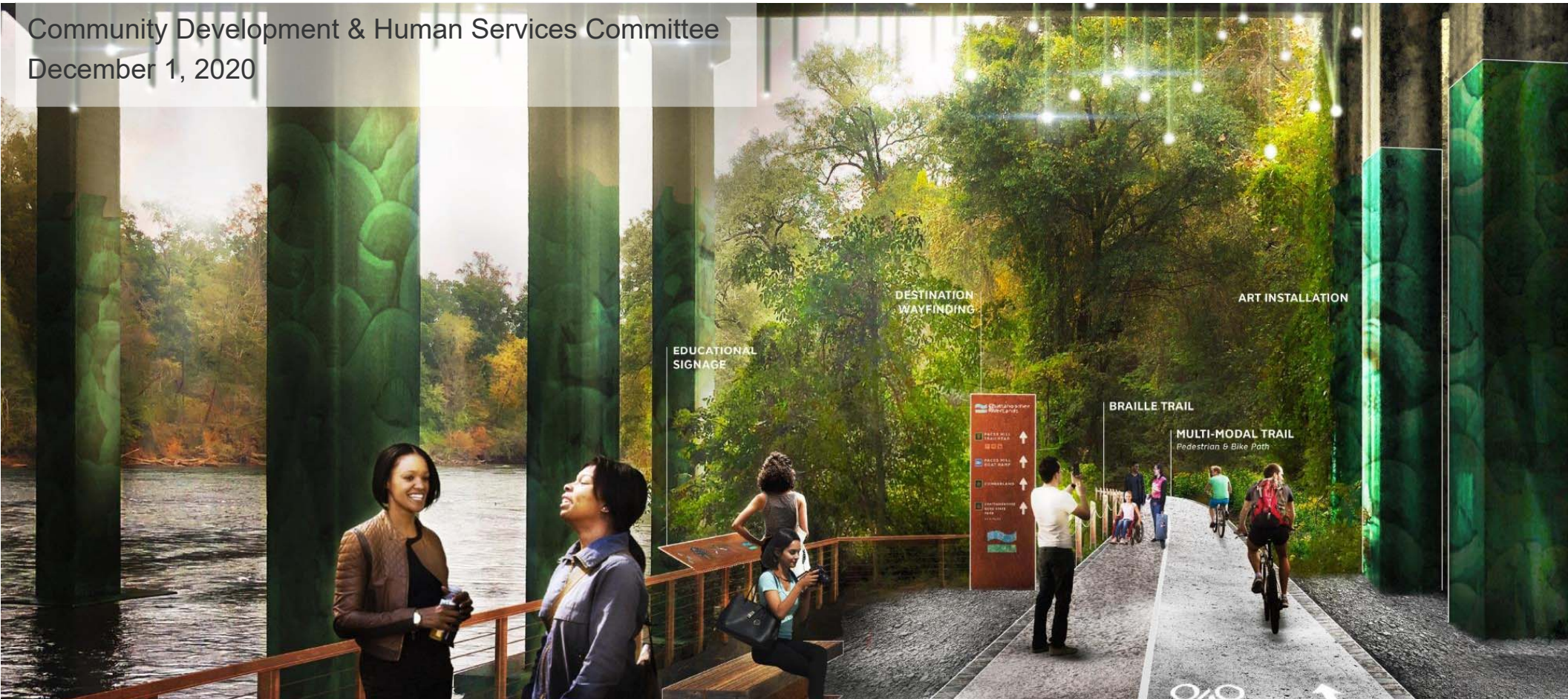
The Chattahoochee RiverLands

George Dusenbury, Georgia State Director

Walt Ray, Michael J. Egan Chattahoochee Conservation Fellow



Community Development & Human Services Committee
December 1, 2020



WE'VE CREATED OVER

5,000 *parks, trails,*
SCHOOLYARDS, AND
PROTECTED LANDS



GENERATED OVER

\$80B *in public funding for*
PARKS AND ACCESS TO
LANDS AND WATERS



AND CREATED ACCESS TO OVER

3 million *acres*
OF LAND FOR PEOPLE



200+ Land for People Projects in Georgia





Martin Luther King,
Jr. National
Historic Park



Atlanta
BeltLine

**The Beltline
Emerald Necklace:**
Atlanta's New Public Realm

Alex Garvin & Associates, Inc.

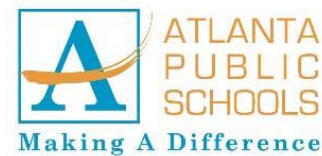
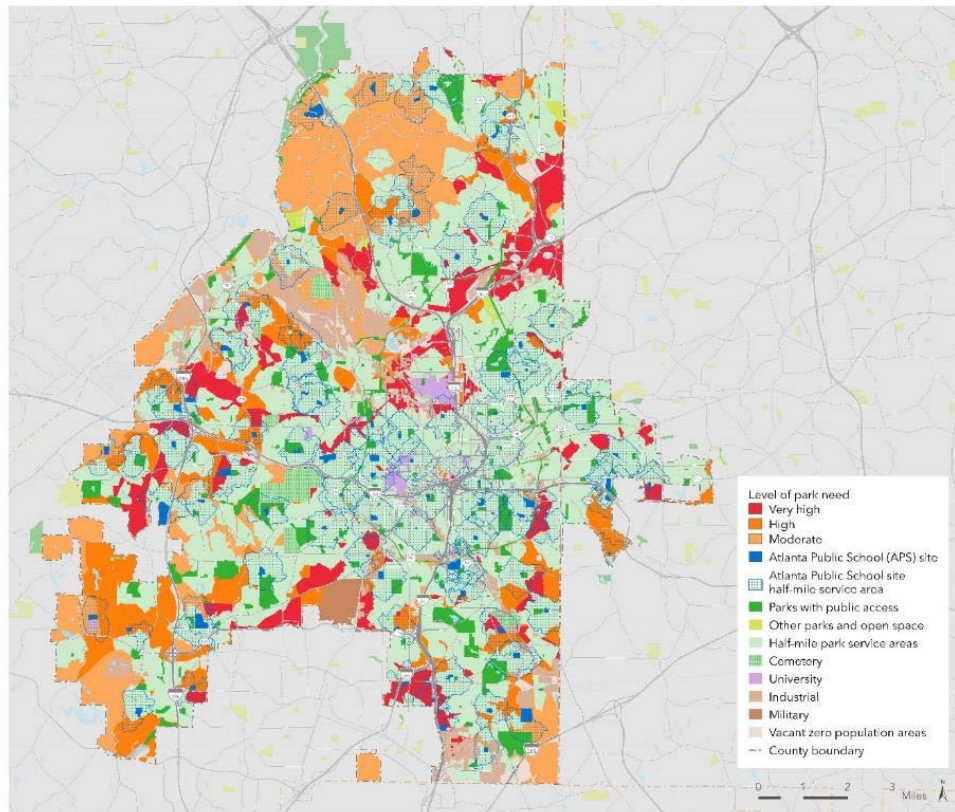


Chattahoochee RiverLands



THE TRUST
FOR
PUBLIC
LAND

Developing Community Schoolyards to Increase Park Access



The Trust for Public Land 2017 *ParkScore*® index

ATLANTA, GEORGIA

Benefits of Parks for People



Physical health



Social well-being



Mental health



Environmental health

OUR COMMITMENT



TO COMMUNITIES

PARKS

ARE ESSENTIAL TO
OUR WELL-BEING



HEALTH

Humans are hardwired to thrive in nature, and research has shown that spending time outdoors boosts mental and physical health.

PARKS

LEVEL THE
PLAYING FIELD



EQUITY

Great parks are welcoming to everyone, strengthening communities by improving quality of life for all—especially the most vulnerable.

PARKS

MAKE OUR COMMUNITIES
MORE RESILIENT TO CHANGE



CLIMATE

Parks help protect us from extreme weather. For example, a shady green park on a hot day in Washington, DC, was 17 degrees cooler than surrounding neighborhoods.



finding
COURAGE

- Heart icon
- Clock icon
- List icon
- Share icon

01:43

▶

Progress bar

📶 ⚙️ 🗄️

An aerial photograph of a lush green landscape with a network of trails and rivers. A semi-transparent map overlay is centered on the image, showing a network of orange and yellow trails, blue lines for rivers, and various icons for parks and points of interest. The text 'THE CHATTAHOOCHEE RIVERLANDS' is overlaid in large white letters across the center. In the bottom left corner, there is a logo for 'Chattahoochee RiverLands' consisting of a stylized wave icon and the text 'Chattahoochee RiverLands'.

THE CHATTAHOOCHEE RIVERLANDS

•PROJECT MANAGEMENT TEAM

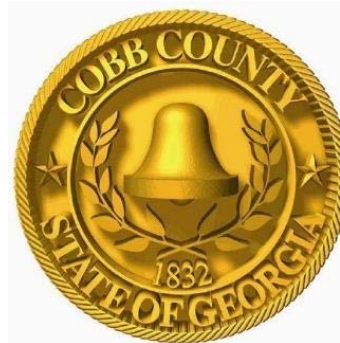
ATLANTA REGIONAL
COMMISSION



THE TRUST FOR
PUBLIC LAND

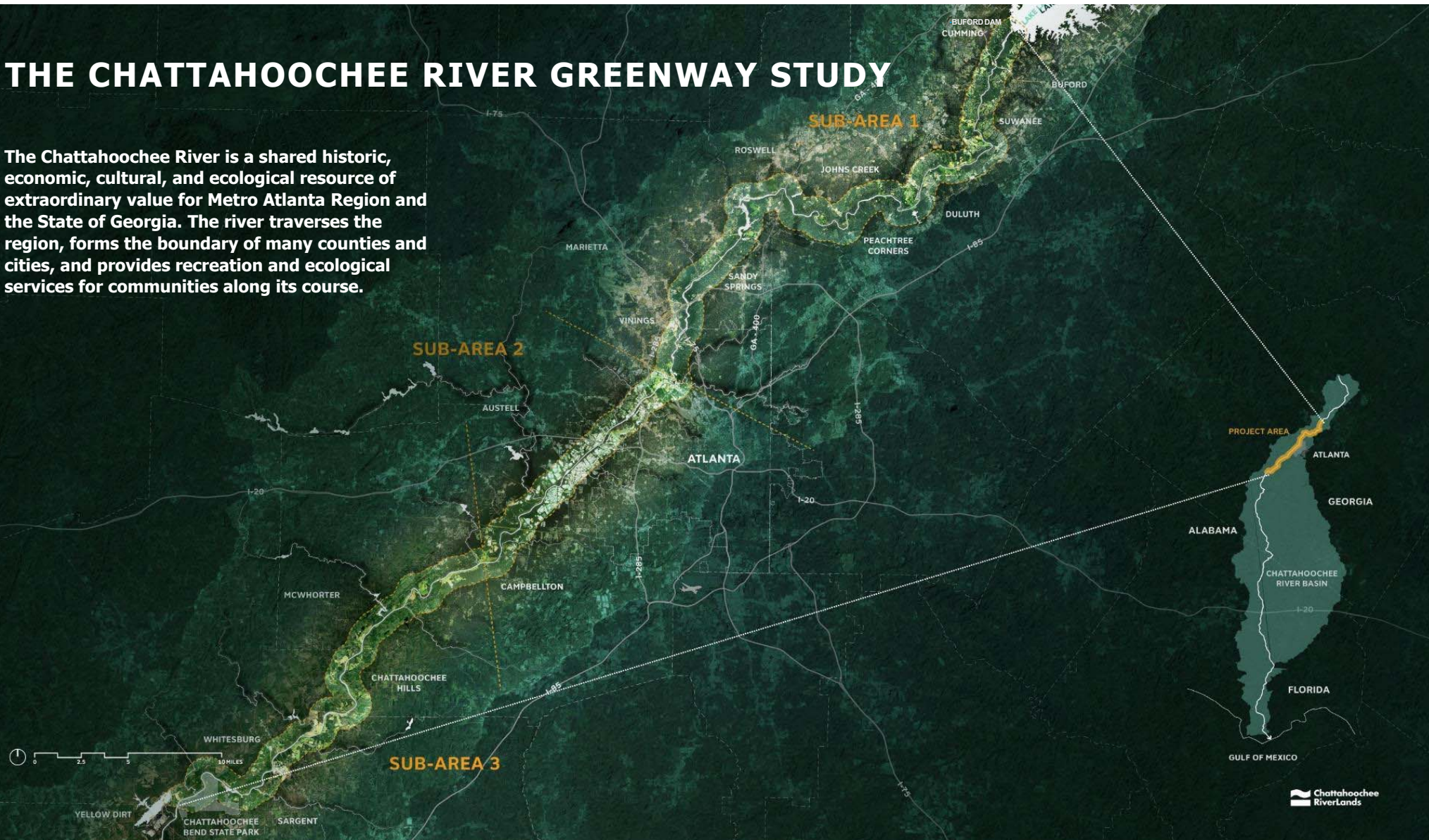


COBB COUNTY CITY OF ATLANTA



THE CHATTAHOOCHEE RIVER GREENWAY STUDY

The Chattahoochee River is a shared historic, economic, cultural, and ecological resource of extraordinary value for Metro Atlanta Region and the State of Georgia. The river traverses the region, forms the boundary of many counties and cities, and provides recreation and ecological services for communities along its course.



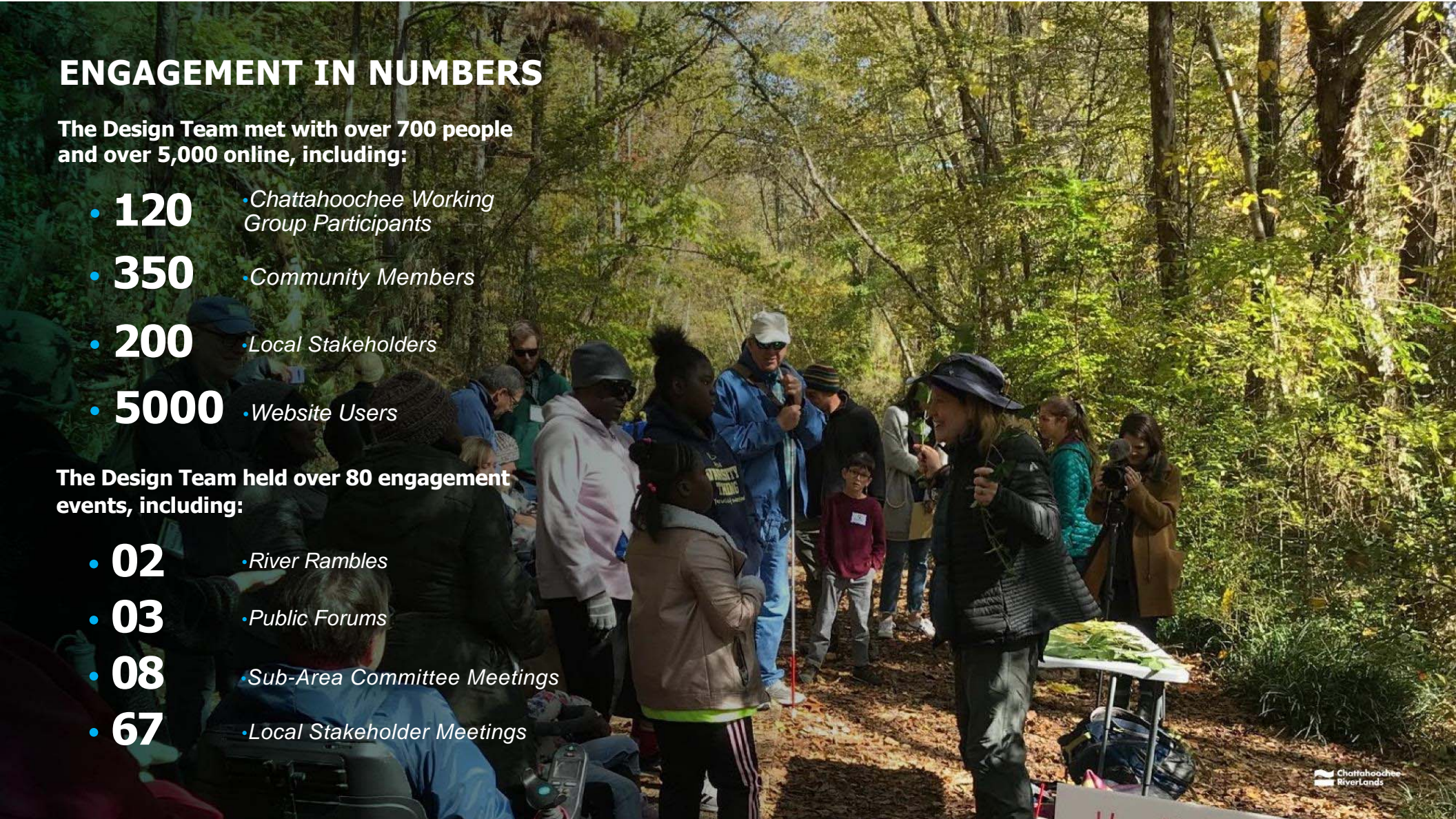
ENGAGEMENT IN NUMBERS

The Design Team met with over 700 people and over 5,000 online, including:

- **120** • *Chattahoochee Working Group Participants*
- **350** • *Community Members*
- **200** • *Local Stakeholders*
- **5000** • *Website Users*

The Design Team held over 80 engagement events, including:

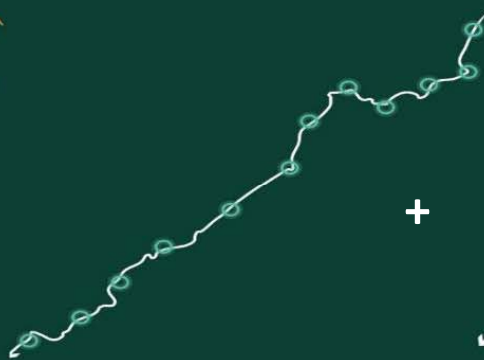
- **02** • *River Rambles*
- **03** • *Public Forums*
- **08** • *Sub-Area Committee Meetings*
- **67** • *Local Stakeholder Meetings*



THE CHATTAHOOCHEE RIVERLANDS



+



+



=



THE GREENWAY
and River Destinations

THE BLUEWAY
and River Ecosystems

TRIBUTARY TRAILS
and Wider Communities

THE RIVERLANDS

GOAL: A COMMON GROUND FOR ALL

The Chattahoochee RiverLands will be accessible to people of all backgrounds, abilities, and ages.



EDUCATIONAL SIGNAGE

DESTINATION WAYFINDING

ART INSTALLATION

BRaille TRAIL

MULTIMODAL TRAIL
Pedestrian & Bike Path

GOAL: AN ECOLOGICAL REFUGE FOR THE REGION

The Chattahoochee Riverlands will improve the ecological health of the river basin.



WHITE-BREASTED NUTHATCH
Sitta carolinensis

RED-BELLIED WOODPECKER
Meigaleops carolinensis

RIVER OTTER
Lutra canadensis

WOOD DUCK
Colaptes auratus

BLUE HERON
Ardea herodias

SOUTHERN LEOPARD FROG
Lithobates sphenoccephalus

EASTERN RIVER COOTER
Desmudemys concinna concinna

SHOAL

BLUE-WINGED OLIVE MAYFLY
Genus Baetis

RAINBOW TROUT
Oncorhynchus mykiss

BROWN TROUT
Salmo trutta

SHOAL BASS
Micropterus cataractae

GOAL: A LIVING LEGACY FOR FUTURE GENERATIONS

The Chattahoochee RiverLands is a generational project that establishes a new, positive identity for the Chattahoochee River.



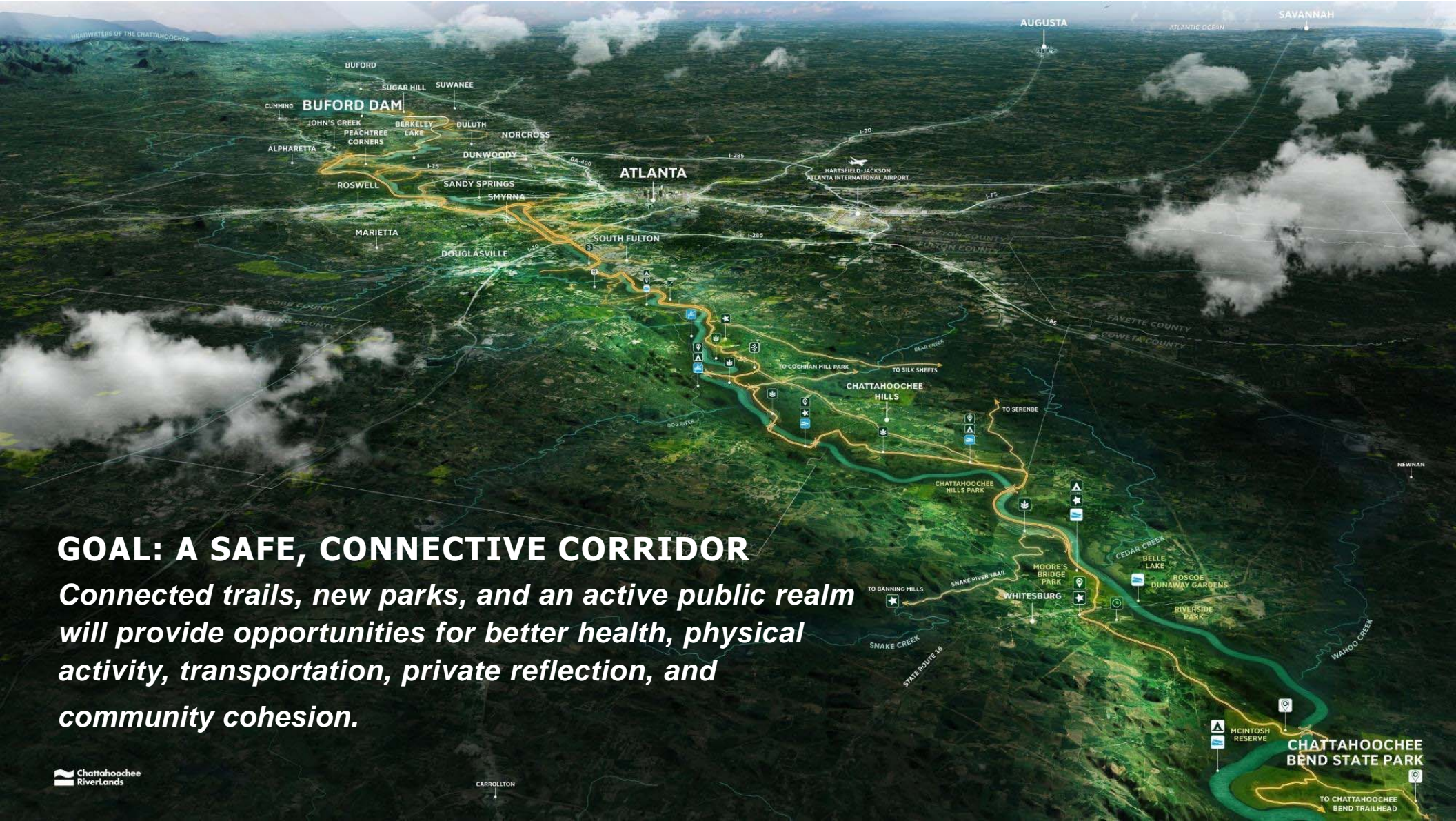
WETLAND
GET-DOWN

EDUCATIONAL
SIGNAGE

WETLAND
WINDOW

WOOD DUCK
Aix sponsa

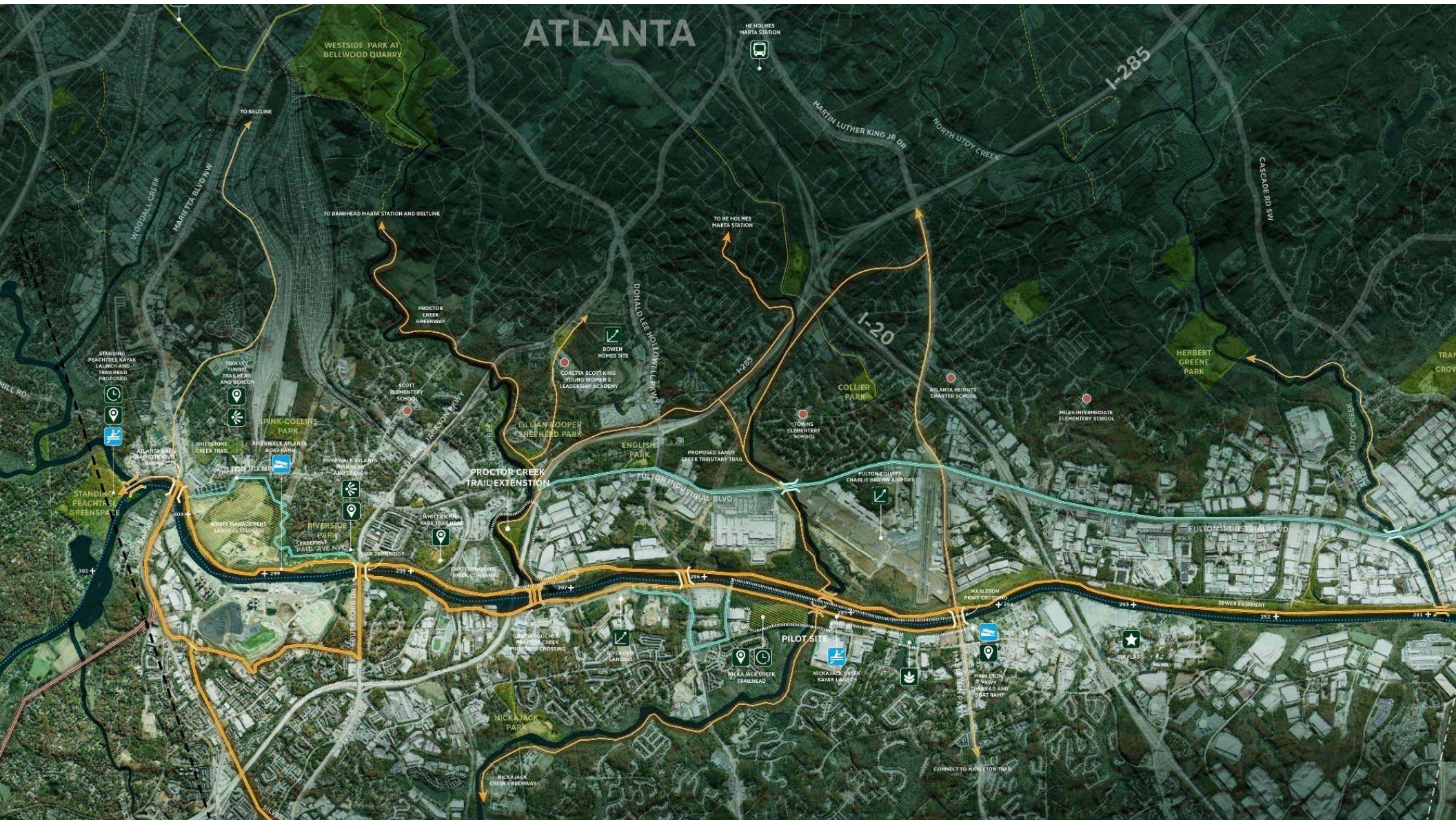
EASTERN PONDHAWK
Erythemis simplicicollis



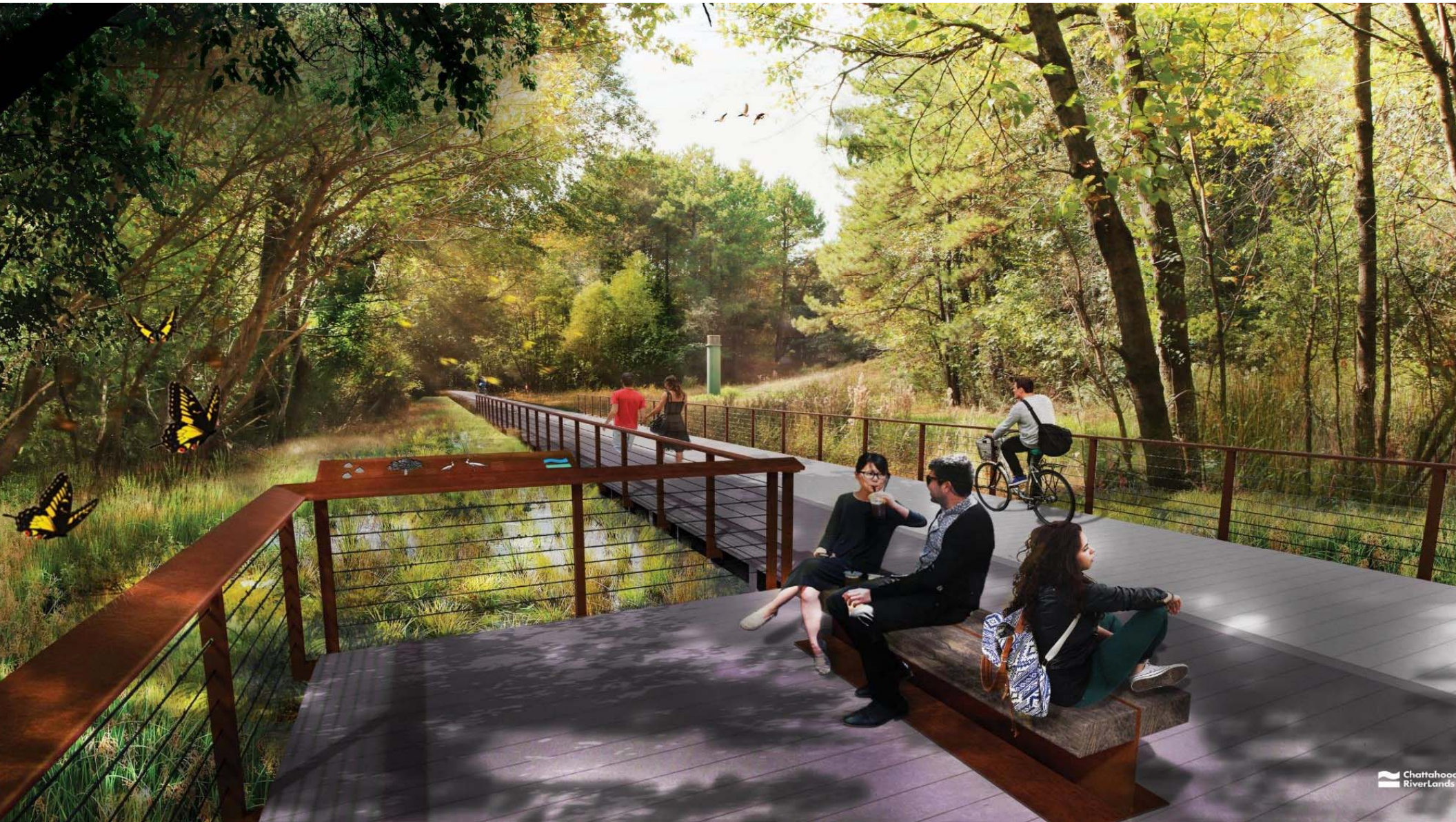
GOAL: A SAFE, CONNECTIVE CORRIDOR

Connected trails, new parks, and an active public realm will provide opportunities for better health, physical activity, transportation, private reflection, and community cohesion.

ATLANTA









RIVERLANDS IN NUMBERS

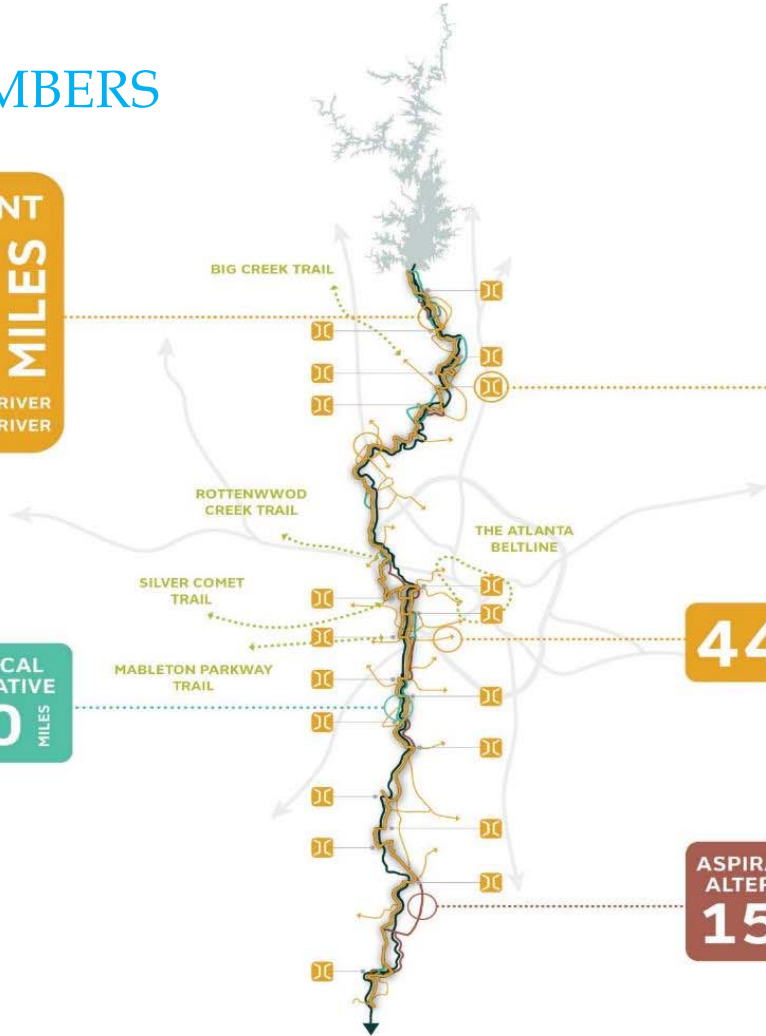
PREFERRED ALIGNMENT
125 MILES
 78% OR 97 MILES WITHIN 1/2 MILE OF THE RIVER
 64% OR 80 MILES WITHIN 1/4 MILE OF THE RIVER

PRACTICAL ALTERNATIVE
140 MILES

RIVER CROSSINGS
25 NEW & EXISTING
 AVERAGE OF 5 MILES BETWEEN RIVER CROSSINGS

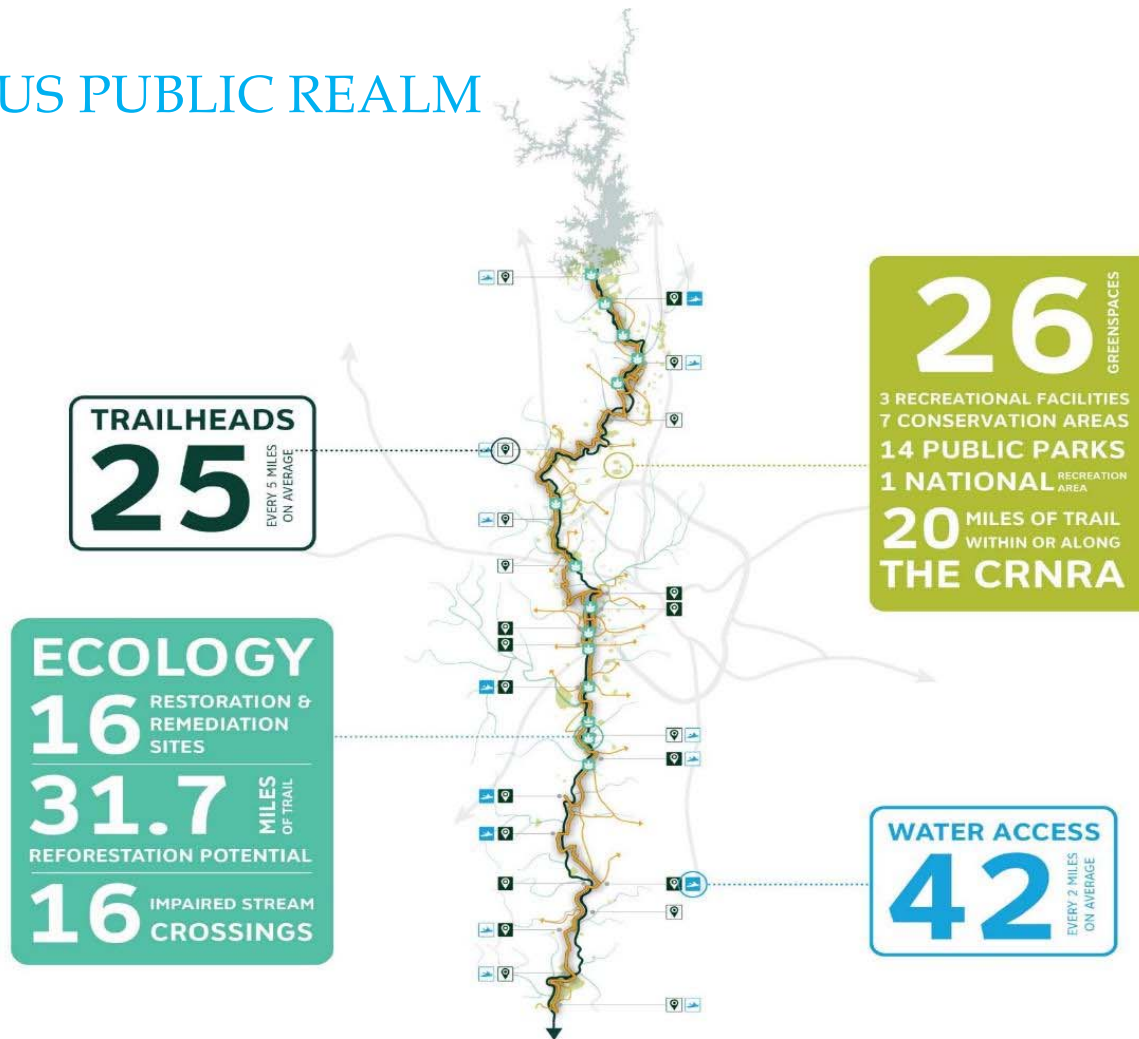
44 TRIBUTARY TRAILS

ASPIRATIONAL ALTERNATIVE
154 MILES



KEY
 JC RIVER CROSSINGS

A CONTINUOUS PUBLIC REALM



A COMMON GROUND FOR ALL

PEOPLE LIVING WITHIN A 15 MINUTE BIKE RIDE OF THE TRAIL
1 MILLION

SOCIAL INFRASTRUCTURE

114 SCHOOLS
13 PUBLIC LIBRARIES
1237 BUS STOPS
6 MARTA RAIL STATIONS

WITHIN 3 MILES OF THE TRAIL

CITIES WITHIN 3 MILES OF THE TRAIL
19

4 ENVIRONMENTAL JUSTICE TARGET AREAS
 LIVING WITHIN A 15 MINUTE BIKE RIDE OF THE TRAIL
128,992 HOUSEHOLDS LIVING WITHIN 3 MILES OF THE TRAIL EARN UNDER THE MEDIAN INCOME IN METRO-ATLANTA



- KEY**
- SCHOOLS AND LIBRARIES
 - PUBLIC TRANSPORTATION ROUTES
 - ENVIRONMENTAL JUSTICE TARGET AREA
 - EXISTING MARTA RAIL STATION

LEGACY WEBSITE



CHATAHOOCHEERIVERLANDS.COM

TAGS
 #ChattahoocheeRiverlands #ChattahoocheeRiver
 #ChattahoocheeGreenway #AtlantaRegionalCommission
 @TrustForPublicLand @CityOfAtlanta @Scape_Studio @Biohabitats
 @Gresham_Smith @GoodThinkingAtlanta @NewSouthAssoc @PlanAtlanta



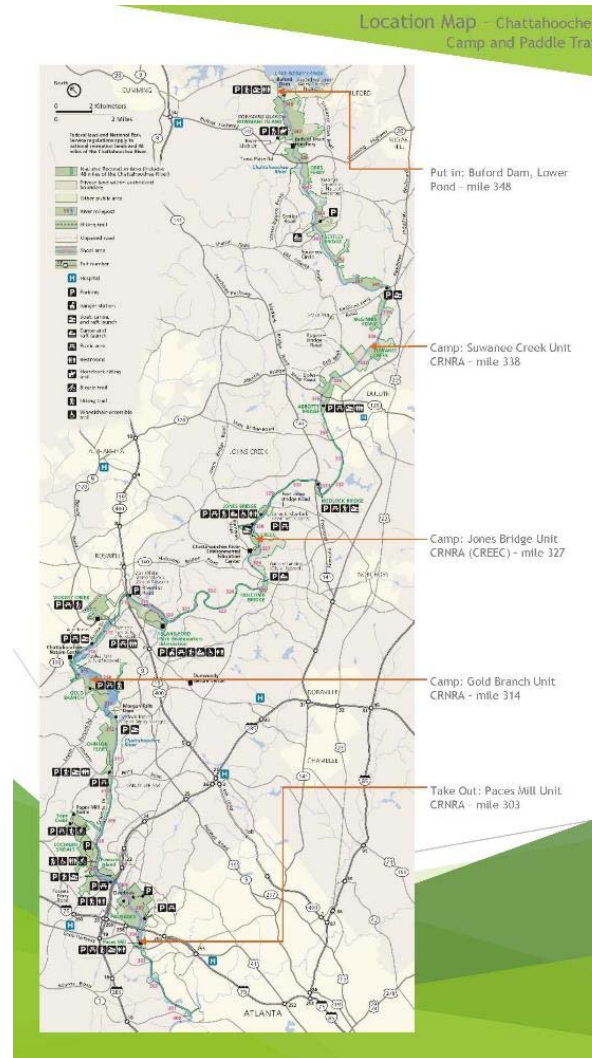
TPL's Role – Implementing the RiverLands

- **Champion Region-Wide Implementation** – Attempt to ensure that all projects completed, singular experience that reflects RiverLands Goals and Vision
- Lead Projects – Great need, but low jurisdictional capacity
- Fiscal Partner – Support RiverLands goals & guidelines on projects by others
- Advocate – Support community
- Shepherd – Steer the project from a distance
- Advise – Consult with jurisdictions to ensure consistent experience
- Observe – Record and amplify accomplishments by others
- Administer – Maintain online platforms & Track investments

Northern End: Chattahoochee Camp & Paddle Trail

Suwanee, Johns Creek, Cobb

- Description: This project represents a unique opportunity to activate 48 miles of the Chattahoochee through a 4-day and 3-night camping excursion . Put-in at Lower Pond Park (Buford Dam). Three nights of camping at 3 Park Units of the CRNRA: Suwanee Creek, Johnson Ferry (CREEC), and Gold Branch. Take-out at existing ramp at Paces Mill. Improvements at each of the 3 camping sites will include: kayak/boat access, picnic shelter, tent platforms, restrooms, pedestrian circulation, signage, and invasive species removal.
- Budget:
 - Total: \$2,755,000
 - GOSP Grant: \$2,040,000
 - TPL: \$615,000
 - NPS: \$100,000
- Project Pros: Bulk of funding already secured, High profile activation
- Project Cons: Large, complex, bureaucratic partner
- Partners:
 - National Park Service
 - Georgia River Network
 - Atlanta Audubon Society (Native habitat restoration)
- Notes:
 - GOSP Grant Awarded 2019
 - GOSP Grant Agreement Pending (Aug. 2020)
 - 2-Year Timeline for Grant from Grant Agreement



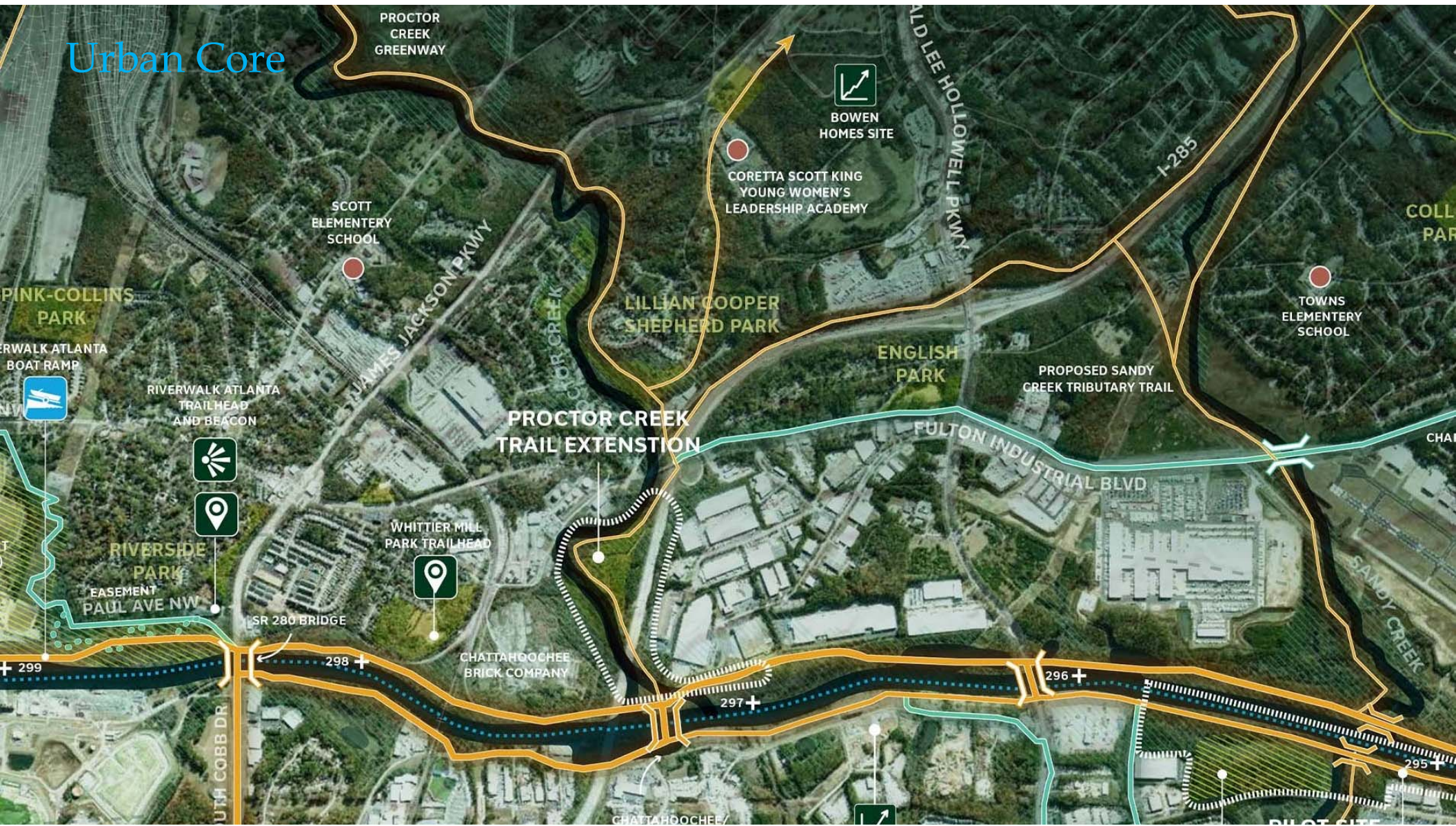
Southern End: Chattahoochee Hills Parks

Chattahoochee Hills, GA

- Description: Two signature parks in Chatt Hills are on the banks of the Chattahoochee. Campbellton Park is already getting a much needed boat ramp and small parking area. Opportunity to add camping, restrooms, park amenities. The Demonstration Project called 'Chattahoochee Hills RiverLands Park' is also primed for new amenities. In conjunction with each other, improving even water access and minimal amenities would open a significant stretch of the River to water access.
- Budget:
 - Campbellton Park: \$3 million to \$5 million
 - Chatt Hills RiverLands Park: \$5 million to \$10 million
- Project Pros: Eager, willing municipal partner,
Notable lack of access in this area
- Project Cons: Limited capacity of project partner
- Partners:
 - City of Chattahoochee Hills
 - Serenbe/Steve Nygren
 - Chattahoochee NOW
- Notes:
 - Opportunity to invest meaningfully in southern end of study area – traditionally under-served (by TPL and others)
 - Very willing partners – simple bureaucratic processes and permitting.



Urban Core



Urban Core: Pilot Project Site

Mableton, GA

- Description: Pilot Project used to test RiverLands ideas and design against regulatory framework and opportunity to develop RiverLands goals and vision on a real site with detailed survey information. Already far along in plan development, specific details already debated and detailed cost estimate.
- Budget:
 - Total: \$12,000,000 (just trail) \$2 to \$ 3 million for amenities
 - Cobb County: \$1 million,
 - GOSP possibly \$3 million
 - ARC: Perhaps \$3 million
 - TPL Contribution: Significant
- Project Pros: County ownership and support – park next door
Perfect site to demonstrate potential
Already 30% const. docs. (environmental)
Mableton P'Way Trail Pending (to Silver Comet)
- Project Cons: Few residents nearby – not a built-in user group
- Partners:
 - Cobb County
- Notes:
 - Requires TPL role
 - Pilot Project Site needs to demonstrate the RiverLands concept to the Metro-Atlanta region
 - Opportunity to catalyze other RiverLands developments



Urban Core: Paul Avenue Trail

Atlanta, GA

- Description: Riverwalk Atlanta, in partnership with Park Pride and TCF, have been working for several years to acquire the dilapidated residential properties separating Paul Avenue from the River (through GA Power land). If partners are willing, a trail along the River connecting Paul Avenue (Whetstone Trail and even abandoned PATH on DWM property) to at least James Jackson P'way, possibly (with Braden Parcel) to Whittier Mill Park/Chattahoochee Brick and then Proctor Creek.
- Budget:
 - Paul Avenue Park Development: \$4,000,000
 - Trail Head: \$3,000,000
 - Boat Ramp: \$ 500,000
 - Trail: \$6,000,000
- Project Pros: First time public access in disinvested community, Visible, early win
- Project Cons: Requires cooperation from GA Power & N.S.
- Partners:
 - Georgia Power
 - City of Atlanta
 - Groundwork Atlanta
 - Riverwalk Atlanta
 - Park Pride
- Notes:
 - 3,100 linear feet of trail Paul Avenue to James Jackson P'way (0.6 miles) – Evolving opportunities downstream to Whittier Mill Park or Proctor Creek (2.0 miles)
 - Requires TPL Role, but several supportive partners likely to be engaged.



Urban Core: Proctor Creek Greenway





- RIVER STORIES
- PROJECT VISION
- ALONG THE RIVERLANDS
- TEAM
- ENGAGE
- FAQS
- DOWNLOADS



Explore the Chattahoochee RiverLands

Reimagining Metro Atlanta's relationship with the Chattahoochee River

RIVER STORIES >

George Dusenbury
Georgia State Director for The Trust for Public Land
George.Dusenbury@tpl.org
404-604-7803

Walt Ray
Michael J. Egan Chattahoochee Conservation Fellow
Walt.Ray@tpl.org
404-432-9320

PARKS UNITE US

Thank you

THE
TRUST
FOR
PUBLIC
LAND

Bald Mountain, ME
PHOTO: CHRIS BENNETT