

# Land for People – how The Trust for Public Land works with local partners to strengthen communities

**George Dusenbury,  
Georgia State Director for The Trust for Public Land**

Atlanta Community Development & Human Services Committee

August 11, 2020



A person is swinging on a swing set in a park. The swing set is made of wood and is suspended from a large, leafy tree. The person is wearing a plaid shirt and dark pants. In the background, there is a city with a river and hills under a clear sky.

# OUR MISSION

The Trust for Public Land creates parks and protects land for people, ensuring healthy, livable communities for generations to come.

**THE  
TRUST  
FOR  
PUBLIC  
LAND**

# Impact of The Trust for Public Land

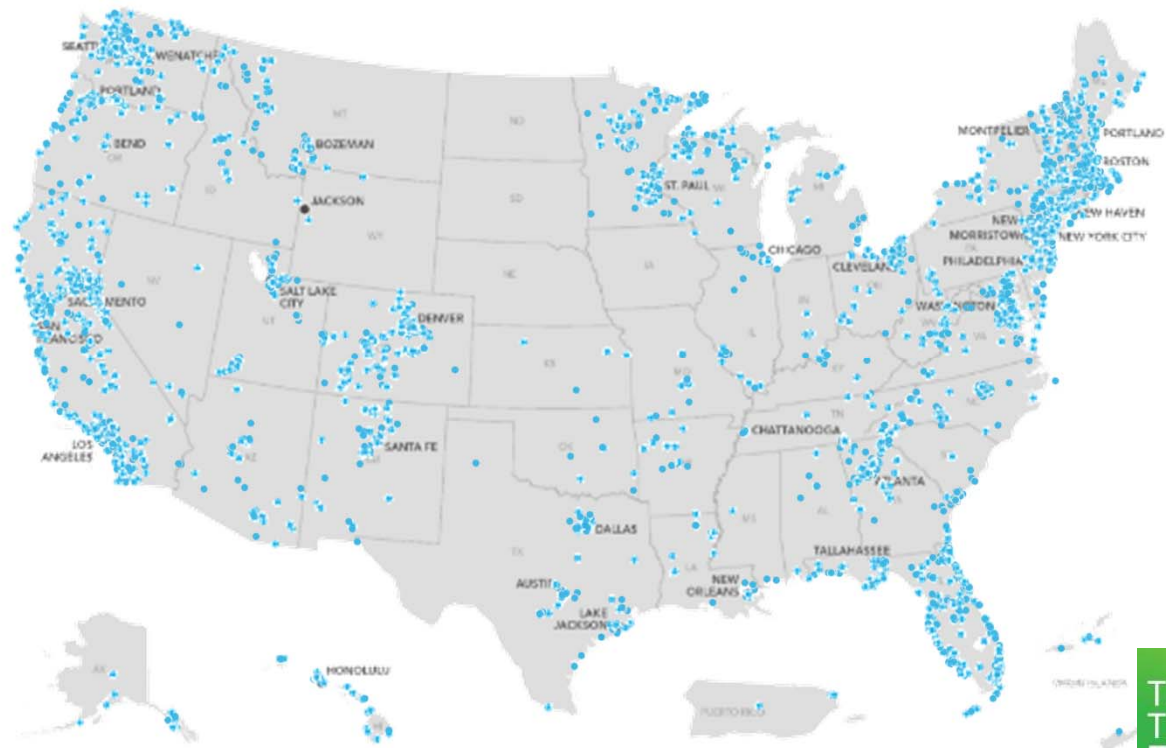
SINCE 1972

**5 thousand+**  
places created

**3 million+**  
acres protected

**70 billion+**  
public funds generated

**8 million+**  
people within a 10-min walk



# 200+ Land for People Projects in Georgia



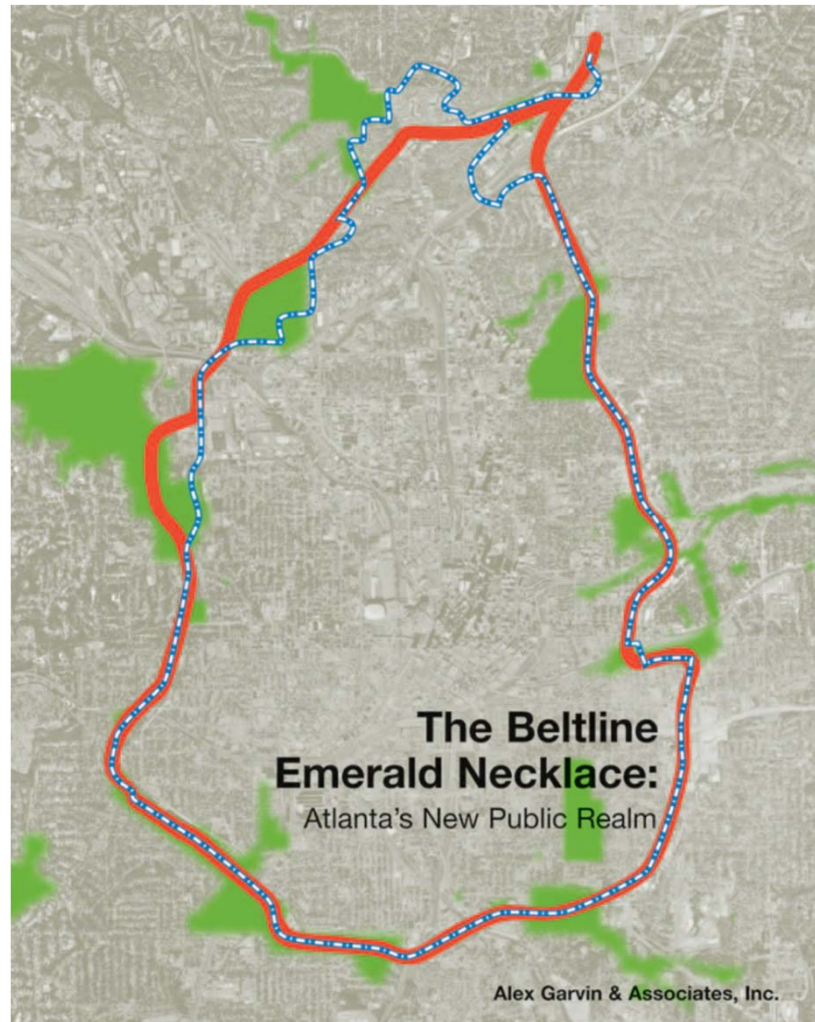
THE TRUST FOR PUBLIC LAND

# Martin Luther King, Jr., National Historic Park



THE  
TRUST  
FOR  
PUBLIC  
LAND

# Atlanta BeltLine



# Atlanta BeltLine



THE  
TRUST  
FOR  
PUBLIC  
LAND

# Chattahoochee River Greenway







# THE RIVERLANDS VISION

THE CHATTAHOOCHEE RIVERLANDS IS A CONTINUOUS PUBLIC REALM. ENVISIONED AS A LAND TRAIL, WATER TRAIL, TRIBUTARY TRAILS, AND A SERIES OF PUBLIC DESTINATIONS

THE  
TRUST  
FOR  
PUBLIC  
LAND



# Chattahoochee RiverLands

**PEOPLE** LIVING WITHIN A 15 MINUTE BIKE RIDE OF THE TRAIL  
**1 MILLION**

**CITIES** WITHIN 3 MILES OF THE TRAIL  
**19**

**SOCIAL INFRASTRUCTURE**  
**114** SCHOOLS  
**13** PUBLIC LIBRARIES  
**1237** BUS STOPS  
**6** MARTA RAIL STATIONS  
WITHIN 3 MILES OF THE TRAIL

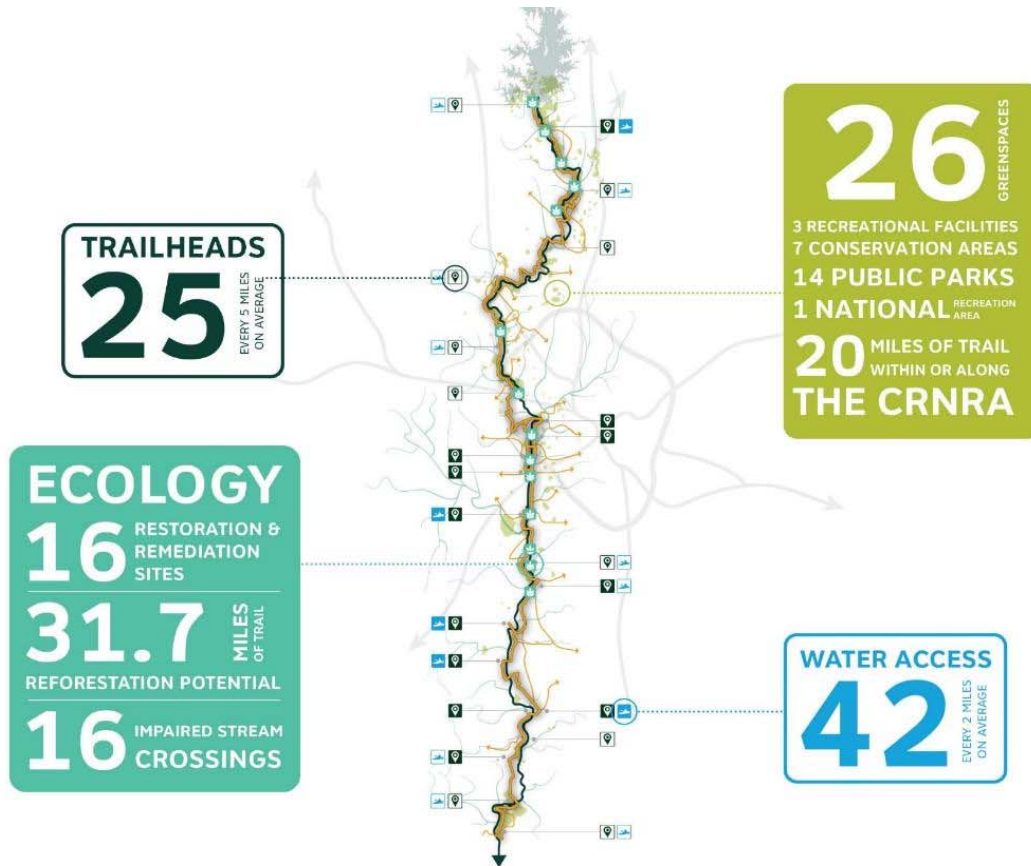
**4** ENVIRONMENTAL JUSTICE TARGET AREAS  
LIVING WITHIN A 15 MINUTE BIKE RIDE OF THE TRAIL  
**128,992** HOUSEHOLDS LIVING WITHIN 3 MILES OF THE TRAIL EARN UNDER THE MEDIAN INCOME IN METRO-ATLANTA



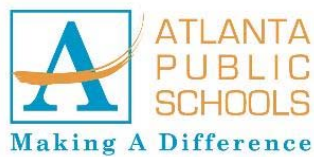
- KEY**
- SCHOOLS AND LIBRARIES
  - PUBLIC TRANSPORTATION ROUTES
  - ENVIRONMENTAL JUSTICE TARGET AREA
  - EXISTING MARTA RAIL STATION



# Chattahoochee RiverLands



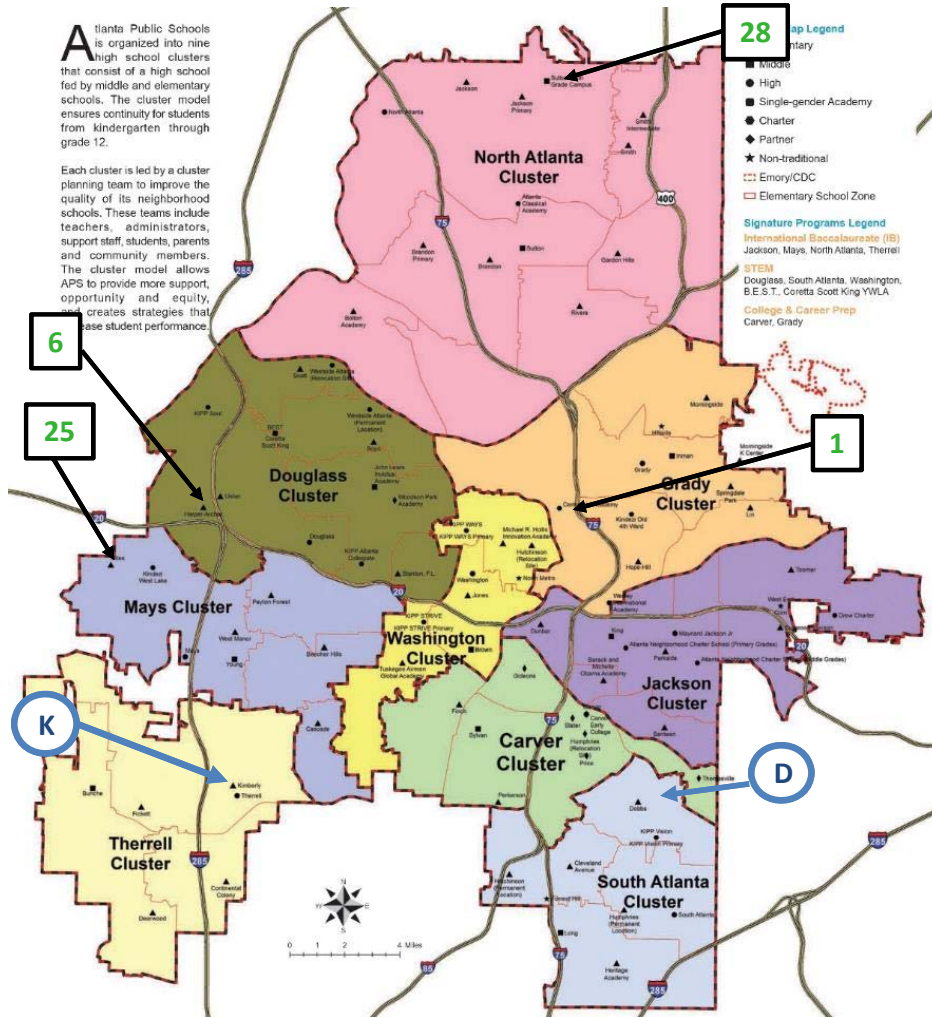
# Atlanta Community Schoolyards



# Atlanta Community Schoolyards

Atlanta Public Schools is organized into nine high school clusters that consist of a high school fed by middle and elementary schools. The cluster model ensures continuity for students from kindergarten through grade 12.

Each cluster is led by a cluster planning team to improve the quality of its neighborhood schools. These teams include teachers, administrators, support staff, students, parents and community members. The cluster model allows APS to provide more support, opportunity and equity, and create strategies that raise student performance.



## 2019-20 SCHOOLYARD SITES

D	Dobbs Elementary	(South Atlanta)
K	Kimberly Elementary	(Therrell)

## 2020-21 SCHOOLYARD SITES

Park Need*	School	Cluster
1	Centennial Place Academy	(Grady)
6	Harper-Archer Elementary School	(Douglas)
25	Miles Intermediate Elementary School	(Mays)
28	Sarah Smith Elementary School	(North Atlanta)

\* Based on TPL 10 minute-walk analysis

# OUTDOOR FOUNDATION THRIVE OUTSIDE ATLANTA

**CNC** Chattahoochee  
NATURE CENTER

SOUTHEAST  
BEESCAPES

ATLANTA  
BELT LINE

ATLANTA  
AUDUBON  
SOCIETY

COOK PARK

Greening Youth  
FOUNDATION

TREES ATLANTA  
KROG  
STREET

CHATTAHOOCHEE  
RIVERKEEPER

THE  
TRUST  
FOR  
PUBLIC  
LAND

CASCADE SPRINGS

SOUTHBEND  
PARK



OUTDOOR ACTIVITY  
CENTER

BOYS & GIRLS CLUBS  
OF AMERICA



Connecting communities,  
non-profits and government  
with the outdoors, so that  
everyone thrives outside.  
Creating rich opportunities to  
provide repeat experiences  
that make the outdoors a  
lifelong habit.

**OUTDOOR FOUNDATION**  
WE ALL THRIVE

**THE TRUST  
FOR  
PUBLIC  
LAND**

# Thrive Outside Atlanta



THE  
TRUST  
FOR  
PUBLIC  
LAND

# Rodney Cook, Sr. Park in Historic Vine City



THE  
TRUST  
FOR  
PUBLIC  
LAND



# Rodney Cook, Sr. Park in Historic Vine City

- 1930s** Area is developed with single-family, multi-family homes
- 2002** Neighborhood is victim to catastrophic flood displacing residents
- 2008** PNA study creates park system masterplan for area focused on managing stormwater
- 2010** NMF engages community in design for the park
- 2015** Blank Foundation offers to provide initial funding to TPL to implement Cook Park
- Dec 2015** Atlanta City Council adopts MOU between TPL & City stating TPL will fundraise, lead community engagement, design, & manage construction of park
- Spring 2016** TPL begins community engagement that will progress over the course of the project  
City and TPL begin collaborative design and engineering process informed by feedback from community and previous design efforts
- June 2017** Original site remediation commences
- Dec 2017** TPL meets \$12.7mm fundraising goal (Eventually raising \$13.4mm)
- Aug 2018** TPL hires same general contractor as City and begins park construction
- 2019** TPL collaborates with non-profit partners and volunteers in park's implementation  
Extensive utility coordination required over course of project  
Construction of park includes coordination with adjacent and separate ongoing Boone Blvd streetscape and project
- Fall 2020** Cook Park slated for completion

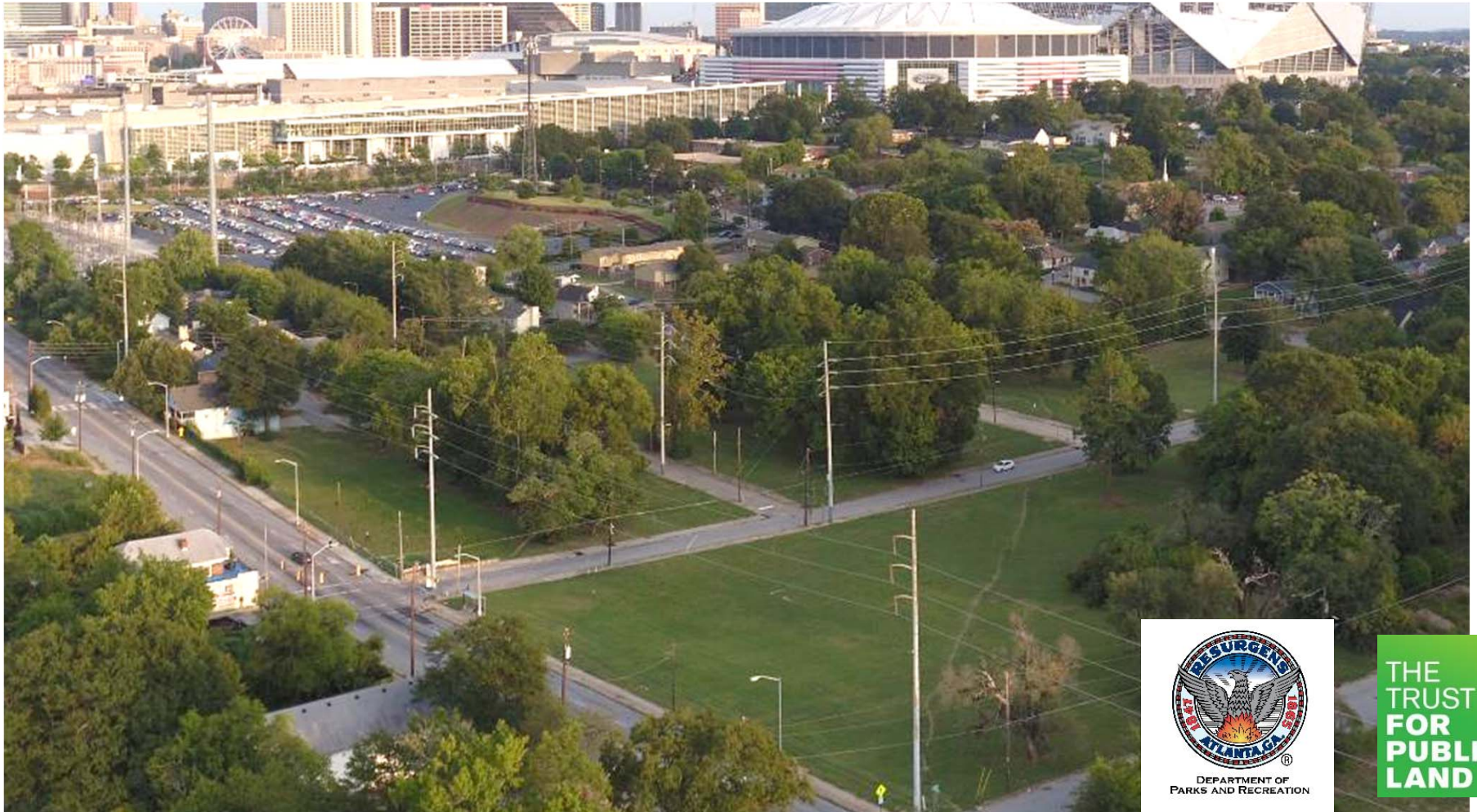


# TPL Budget for Cook Park - \$13.4 Million

<b><u>Passive Recreation and Park Landscaping</u></b>	<b>\$2,918,000</b>
Lawns	\$ 1,583,000
Green Infrastructure Enhancements	\$ 400,000
Park Landscaping & Irrigation	\$ 935,000
<b><u>Architecture &amp; Park Hardscape</u></b>	<b>\$4,640,000</b>
Boone Blvd Plazas	\$ 200,000
Restrooms and Shelter Pavilions	\$ 650,000
Streetscape Improvements	\$ 415,000
Terraced Pools and Pond (Supplement to DWM)	\$ 500,000
Bridge over Pond	\$ 1,500,000
Electrical, Lighting, and Security Cameras	\$ 1,225,000
Site Furniture	\$ 150,000
<b><u>Park Enrichment and Activation</u></b>	<b>\$3,142,400</b>
Splash Pad	\$ 750,000
Tot Lot & Playground	\$ 1,500,000
Multi-Use Sports Court Area	\$ 300,000
Outdoor Classroom & Performance Space	\$ 341,000
Climbing Boulder Area	\$ 180,000
Park Identification, Rules Signage, and Donor Recognition	\$ 35,700
<b><u>Project Management and Stewardship</u></b>	<b>\$2,699,600</b>
Staffing	\$ 841,000
Office Costs	\$ 78,000
Professional Services	\$1,727,000
Other Expenses	\$ 53,600



# Rodney Cook, Sr. Park in Historic Vine City



DEPARTMENT OF  
PARKS AND RECREATION

THE  
TRUST  
FOR  
PUBLIC  
LAND

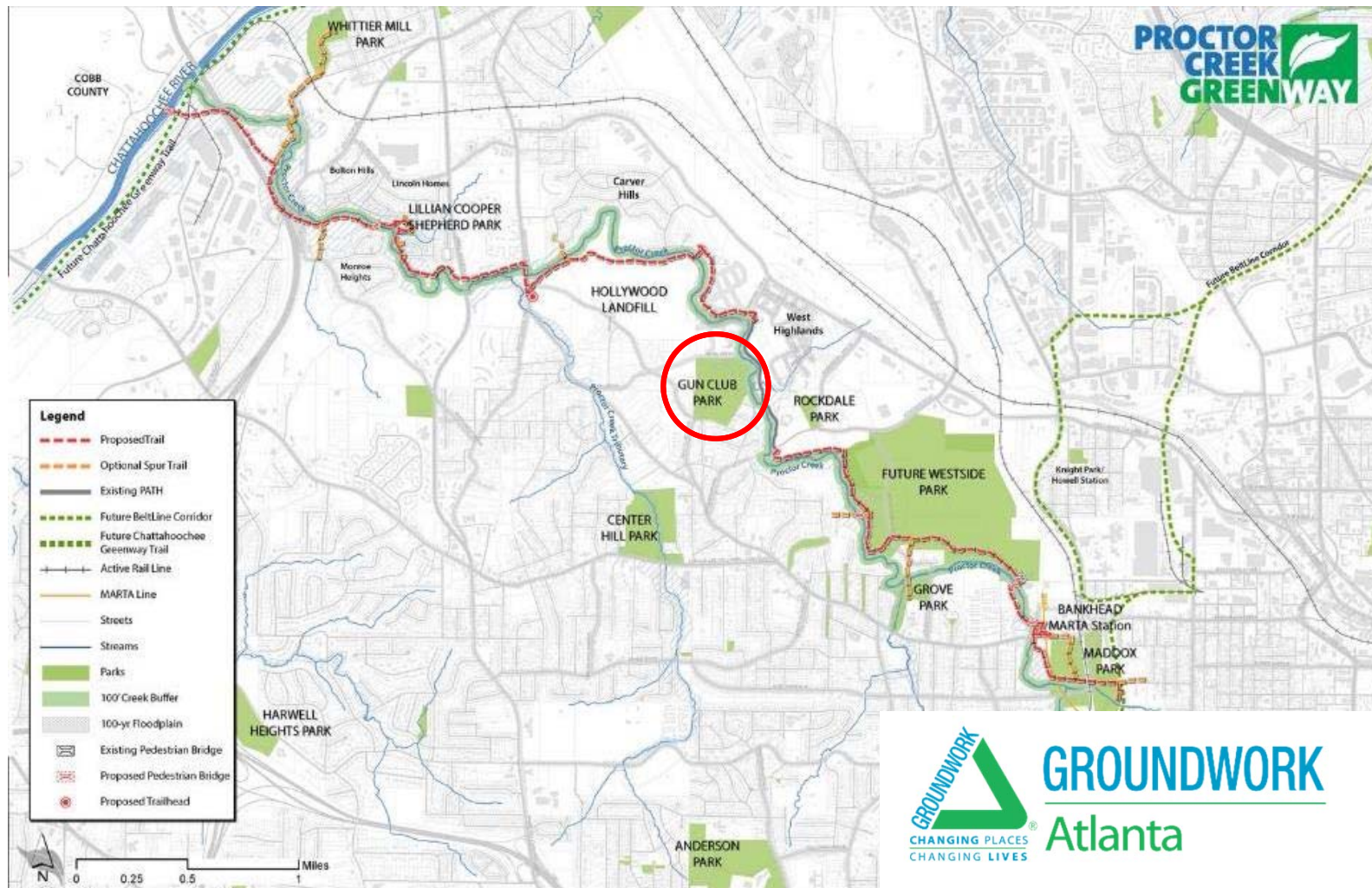








# Exploring Gun Club Park





# Questions?

**George Dusenbury**  
**State Director**  
**Trust for Public Land**  
**(404) 604-7803**  
**[George.Dusenbury@tpl.org](mailto:George.Dusenbury@tpl.org)**

**THE  
TRUST  
FOR  
PUBLIC  
LAND**

