

August 13, 2024

District 8 Transportation Task Force

Session Five: Schools

CITY OF ATLANTA



DEPARTMENT OF TRANSPORTATION

Mayor Andre Dickens
ATLDOT Commissioner Solomon Caviness, IV

Agenda



Welcome / Introductions

Event Traffic

School Traffic & Safety

Holistic School Mobility Plans

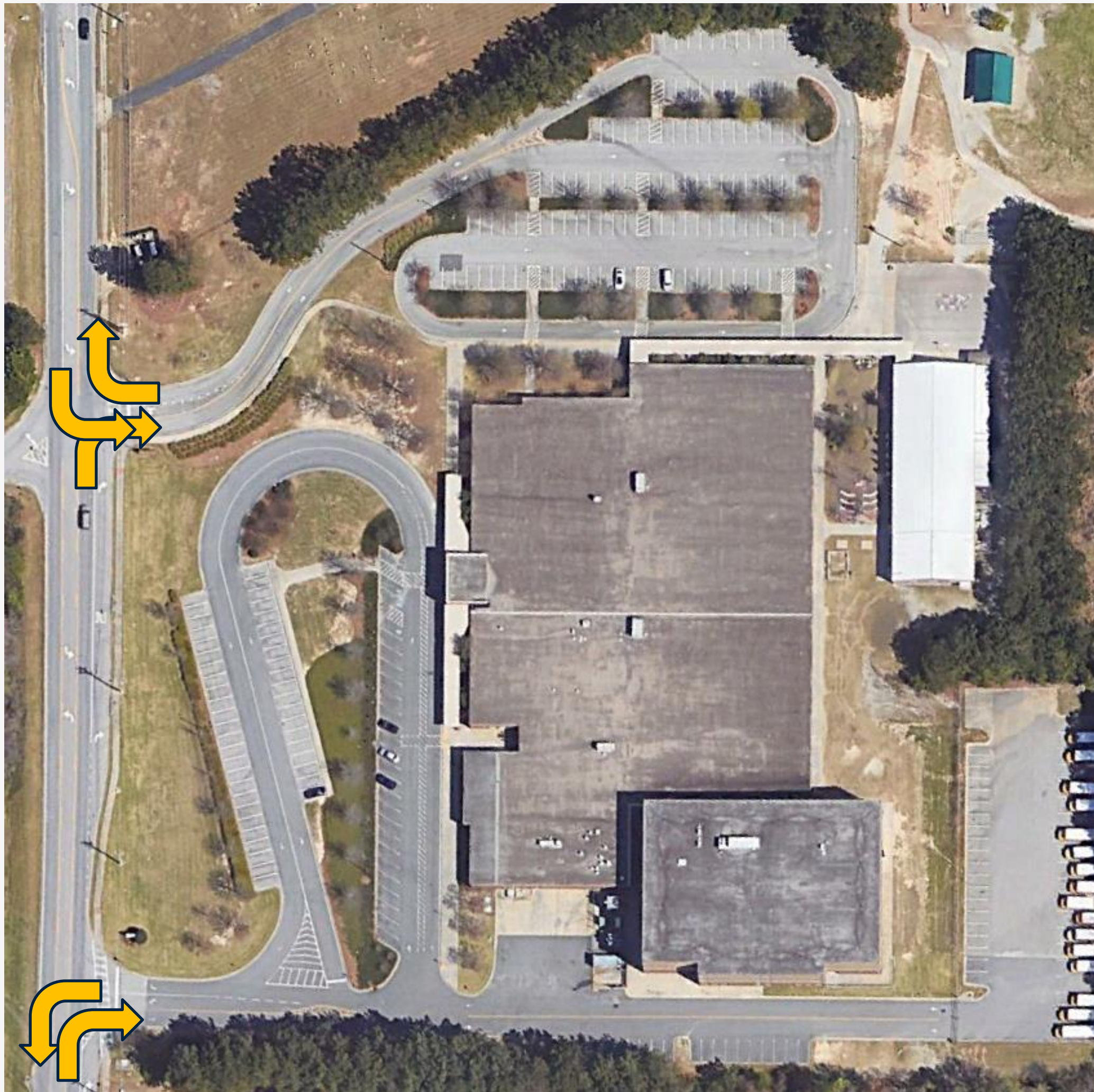
Lovett School Trip reduction Plans

Question and Answer Session

Closing Remarks

Event Traffic Planning

- Consideration for event traffic is important for quality of life near event spaces
- Longer heavy inbound peak
- Shorter heavier outbound peak
- Traffic patterns like this are typical for:
 - Schools
 - Churches
 - Concerts and Special Events



Event Traffic Planning

Separate flows as much as possible

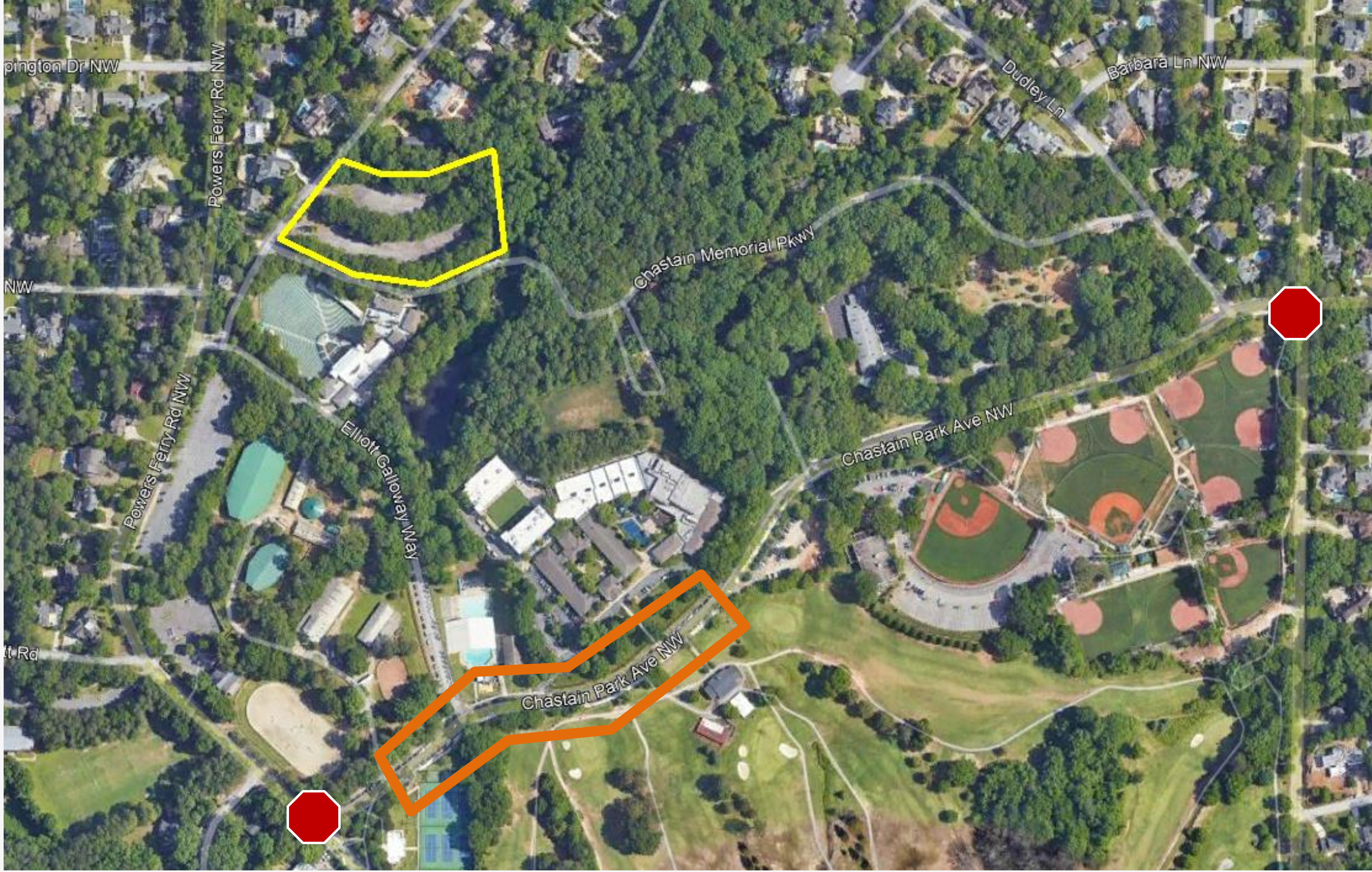
- Schools: separate parent loop from bus loop
- Traffic should cross as little as possible
- Entrance can be a single direction only (right-in only or left-in only)
- Right out only exits
- Minimize conflicts





Parking Strategies

- Traffic exiting parking
 - Single exit from parking lot
 - Left on Stella Dr from parking lots and Chastain Memorial Pkwy
 - WB only traffic on Chastain Memorial
 - Right on Elliott Galloway Way
 - Right on Powers Ferry Rd
- Minimize vehicular traffic on Elliott Galloway Way to facilitate parking egress
- Consider managed parking, balancing the impact of unintended consequences





School Mobility Planning

Separate flows as much as possible

- Schools: separate parent loop from bus loop
- Traffic should cross as little as possible
- Right out only exits
- Minimize conflicts



SAFE
ROUTES TO
PARKS

Safe Routes to Parks is a program that manages grants to implement environmental, policy, and program strategies to create safe walking and biking access to parks.



Safe Routes

PARTNERSHIP

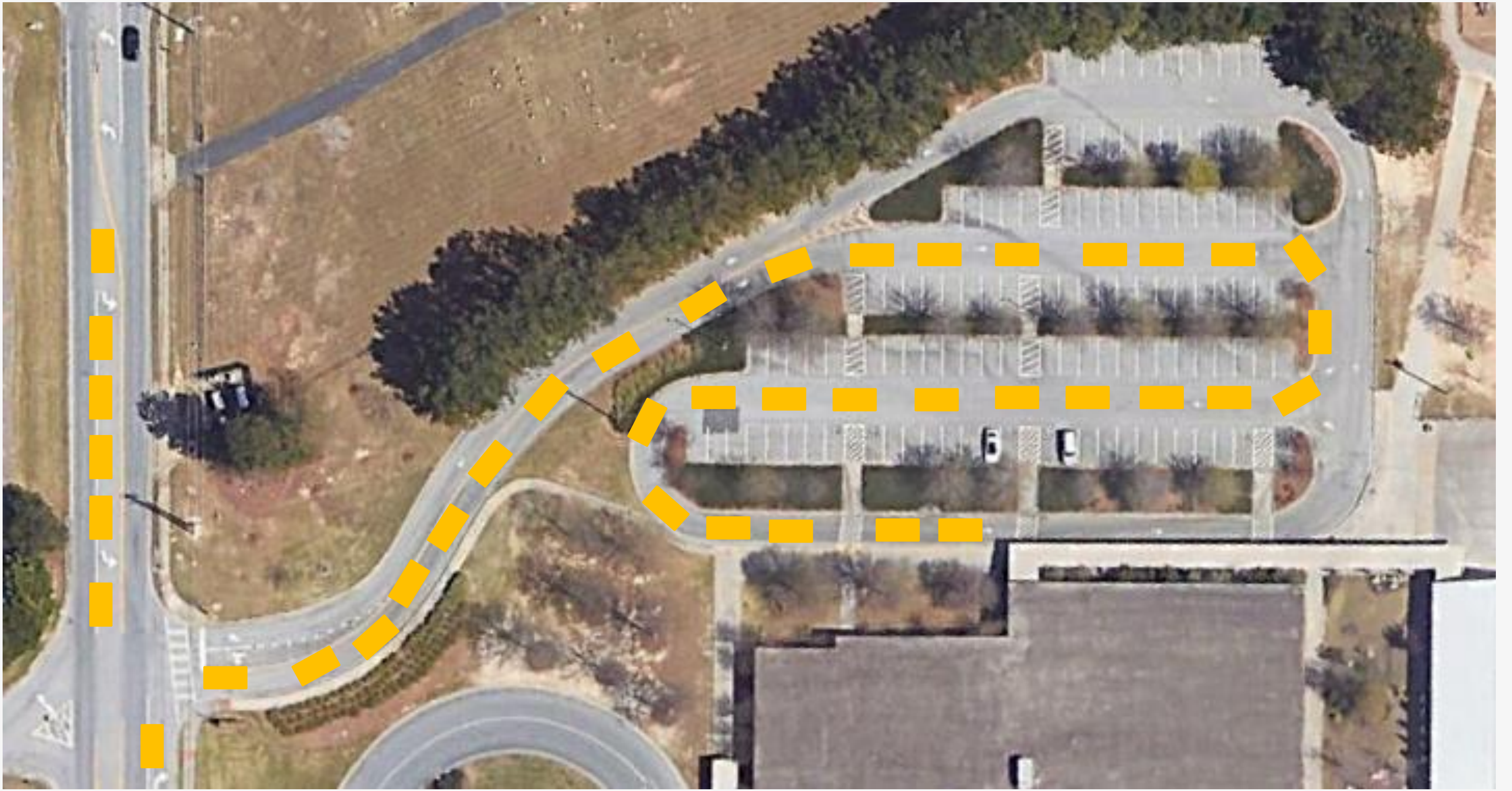
- Resources
- Education
- Assessment
- Planning
- Implementation

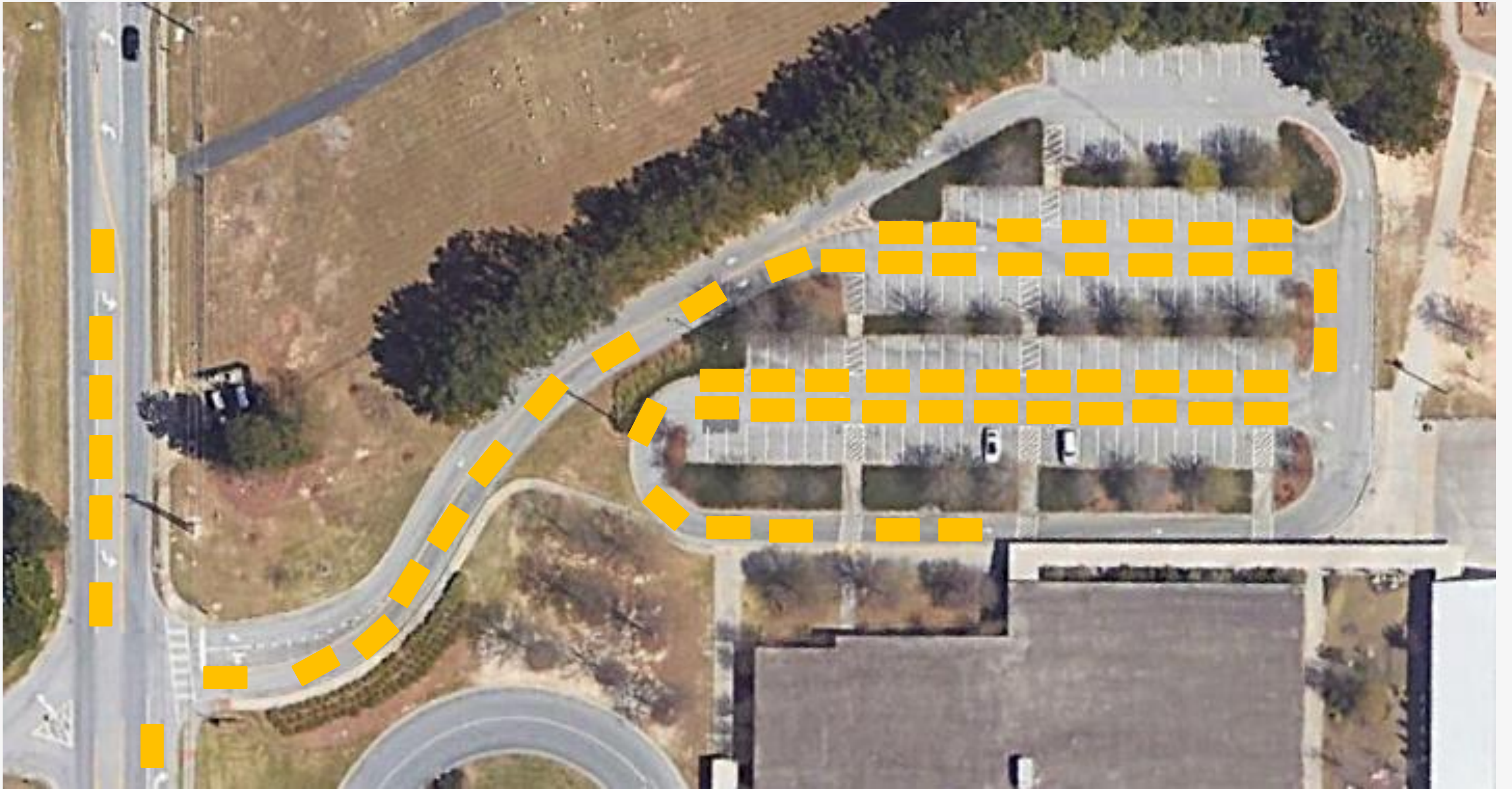
Let's Go For A Walk: A Toolkit for Planning and Conducting a Walk Audit



Photo Credit: Orange County Health Care Agency

- Lighting
- Park & Walk
 - Park and school synergy
 - (Micro)transit partnership
 - Business parking lot partnership
- Pedestrian education
 - Daily messages
 - Parking lot safety
 - Crossing education







1255 CANTON ST, STE G
 ROSWELL, GA 30075
 678-795-3600
 WWW.CALYXENGINEERS.COM

Queue Release Signal System

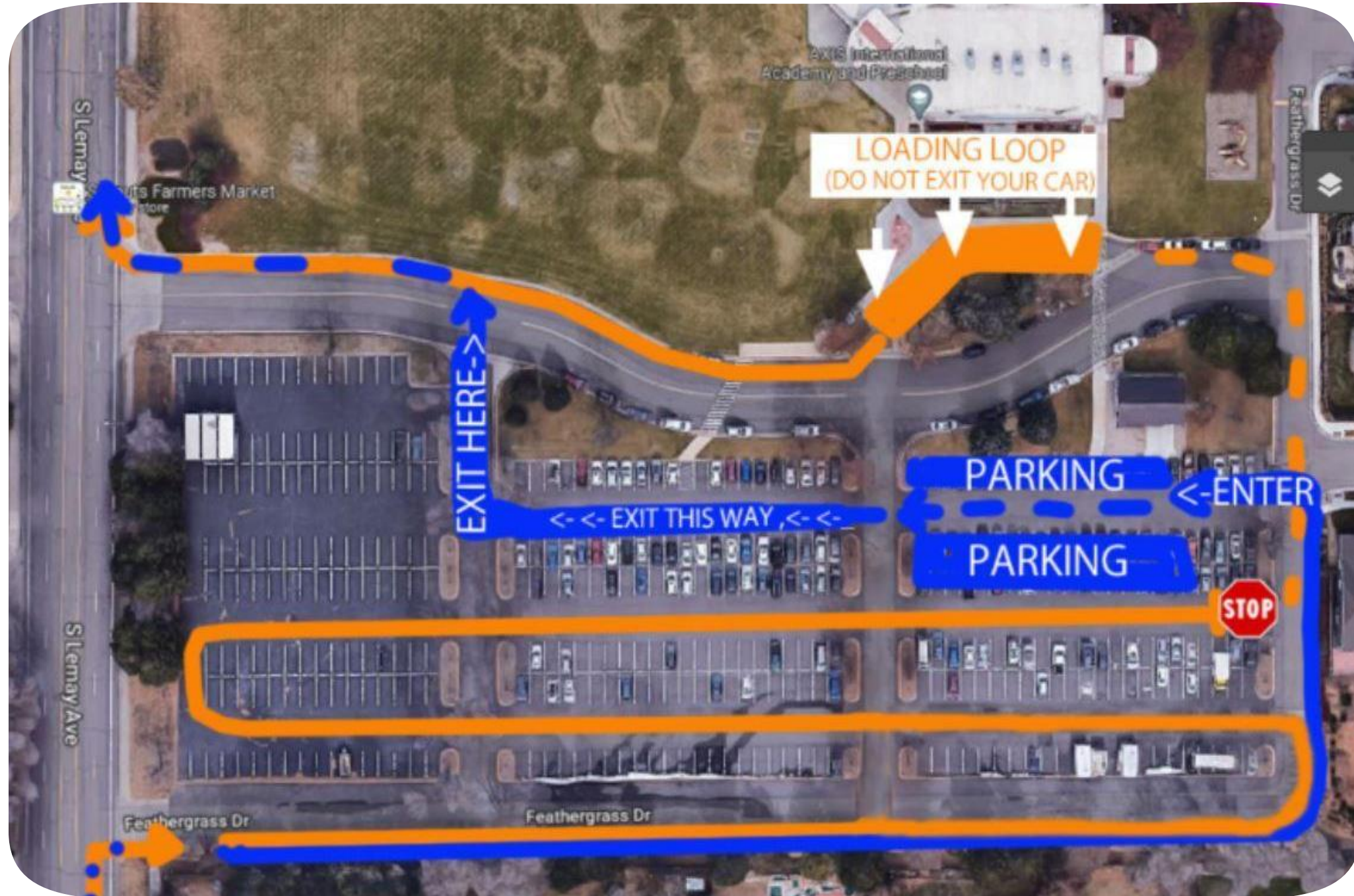
Atlanta Speech School
 3160 Northside Pkwy NW
 Atlanta, GA 30327

2-2-2018



Schools

- Flyers and handouts for education
- Rearview mirror
- Carpooling
- Shuttles



The Lovett School

Gray Kelly

Chief Operating Officer

Ted Gilbreath

Director of Special Programs

Question and Answer Session

Upcoming Steps

1

The Draft Traffic Study Recommendations will be presented to the Task Force on August 20

2

Feedback to the Draft Traffic Study Recommendations will be discussed with ATLDOT and incorporated into the final study

3

The final study will be adopted by the end of the year.

Visit our website and follow us on social media

 atldot.atlantaga.gov

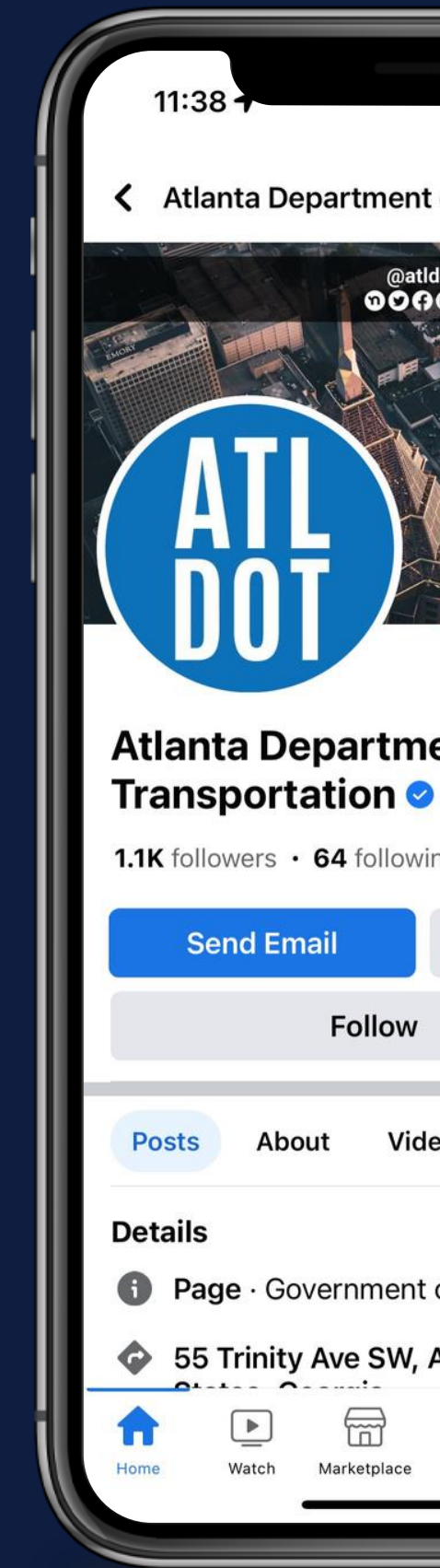
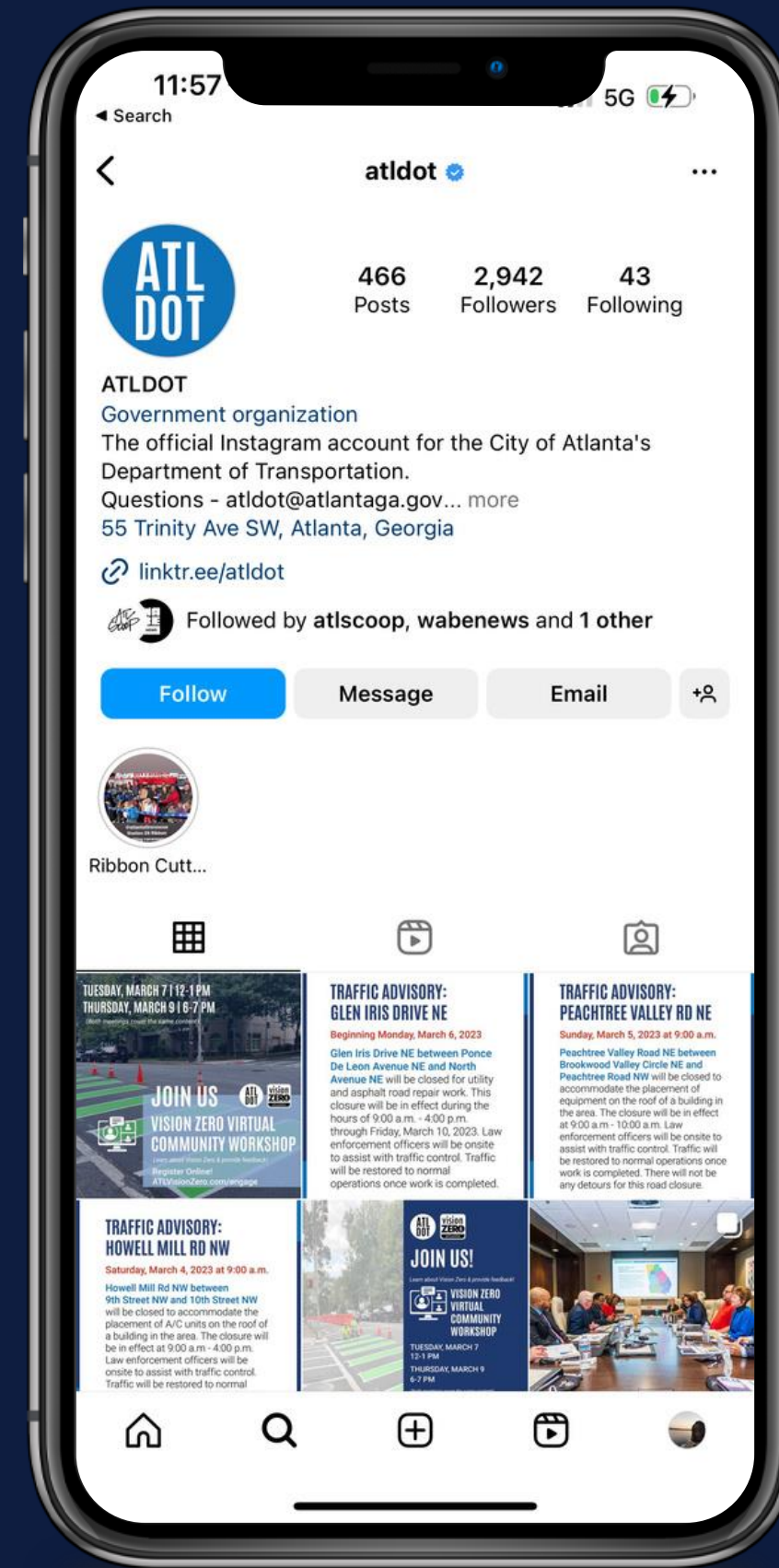
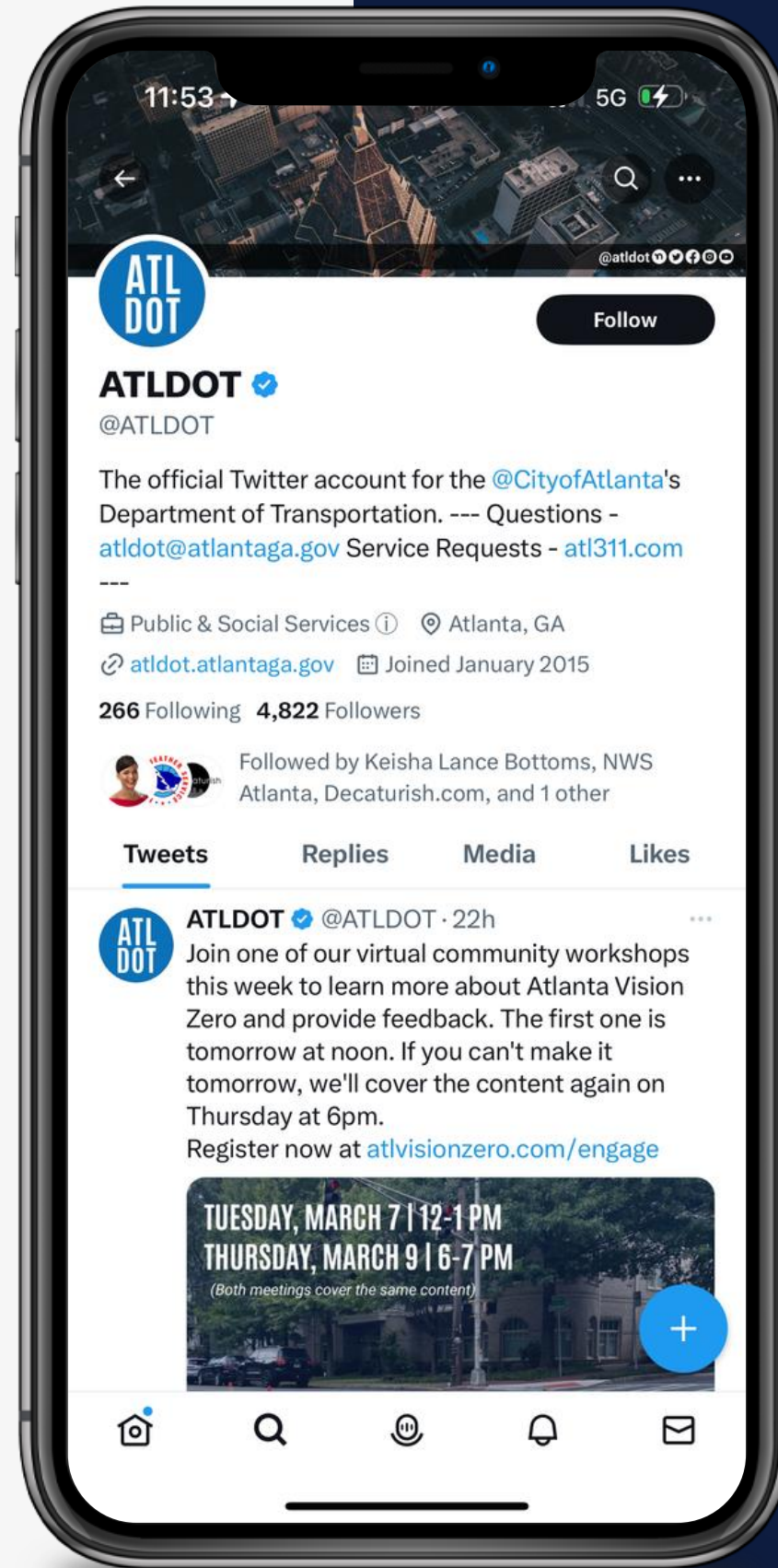
 City of Atlanta Department of Transportation (ATL DOT)

 @ATL DOT

 .com/ATL DOT

 @ATL DOT

 @ATL DOT



Thank you!