



# QUARTERLY PRESENTATION

Atlanta City Council

Community  
Development and  
Human Services  
Committee

3.12.24



@atlantabeltline



@atlantabeltline



@atlantabeltline



*Westside Trail Segment 4 construction*



# STANTON PARK APARTMENTS

56 rental units of affordable housing in Peoplestown next to Southside Trail

- 30% - 80% AMI
- 10 units reserved for residents who have experienced homelessness

Partners include:

- Woda Cooper & Parallel Housing
- Invest Atlanta
- Atlanta Housing
- Partners for HOME
- Georgia Dept of Community Affairs





# ECONOMIC DEVELOPMENT



*BeltLine Business Ventures*



*BeltLine Marketplace*



*BeltLine Marketplace first cohort*



*BeltLine Business Breakfasts*



# SMART CORRIDOR & DIGITAL INCLUSION

Aiming to bridge the digital divide with affordable internet, public Wi-Fi, and tech training, while engaging all voices through transparent communication and empowering participation

Partners include

- Honeywell
- eX<sup>2</sup> Technology

February 29 and March 27 community meetings held





# AFFORDABLE HOUSING PRODUCTION

4,500

## 2006-2018:

- 1,638 units created or preserved in TAD

## 2021:

- 366 units created or preserved, exceeding goal of 320 units

## 2022:

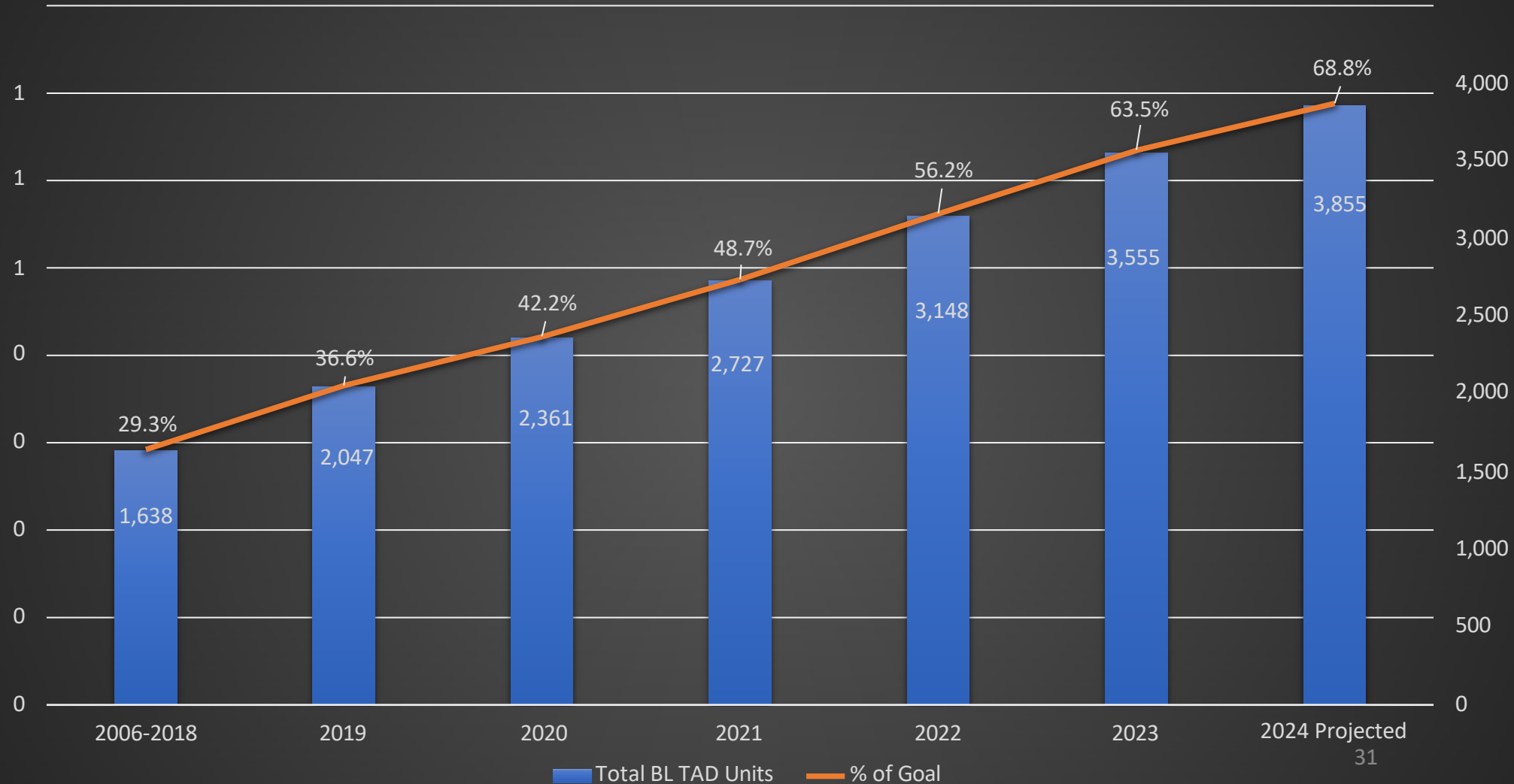
- 2022 Goal of 320 units
- Actual units: 421 units
- Exceed goal by 31.5%

## 2023:

- 2023 goal of 310 units
- Actual units: 407 units
- Exceed goal by 31.3%

## 2024

- ~300 units/year to meet 5,600 unit goal
- 483 units in pipeline





# PROTECTING LEGACY RESIDENTS

10-year tax relief program for legacy residents in Equity Priority Sub-areas

Covers property tax increases through 2030

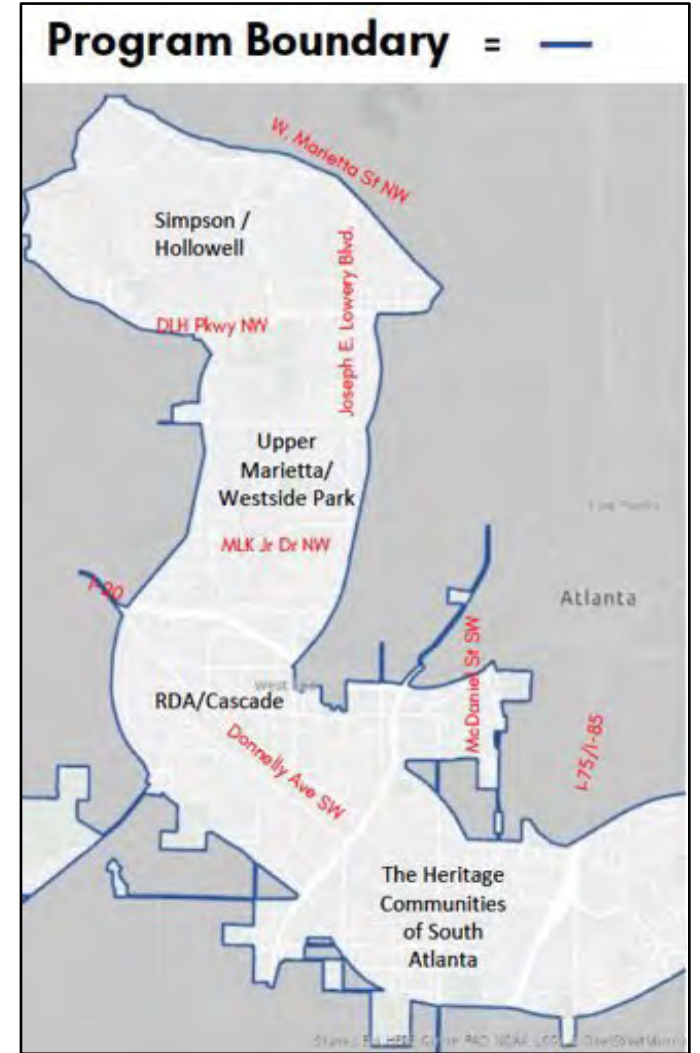
221 homeowners currently approved

92.4% of homeowner's earn <80% Area Median Income

Philanthropic and Private Donors



For more information, visit: [beltline.org/retentionfund](http://beltline.org/retentionfund)  
email: [retentionfund@atlblp.org](mailto:retentionfund@atlblp.org)  
call: 404-418-7849





# LAND ACQUISITION & ACTIVATION

Activation of ABI controlled/owned land to ensure long term affordability (housing + commercial):

Murphy Crossing

579 Garson Drive

425 Chappell Road

350 Chappell Road

Avon Avenue

Pittsburgh Yards

Amsterdam Walk





# COMPLETING THE LOOP

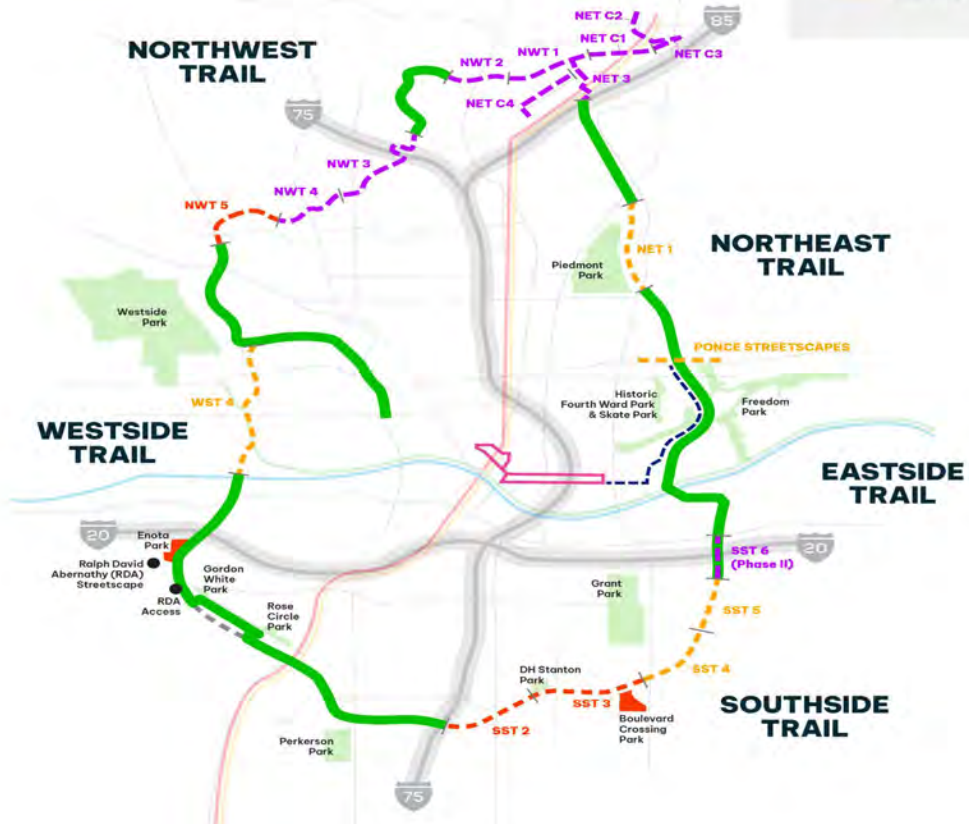
By the end of 2024, 85% of the mainline trail will be completed or under construction

Northern segments of the mainline trail will be 100% designed by the end of 2024



## MAP KEY

- COMPLETE
- UNDER CONSTRUCTION
- SHOVEL READY
- IN DESIGN
- DOWNTOWN STREETCAR
- FUTURE STREETCAR
- MARTA LINES







# SOUTHSIDE TRAIL

## Segments 4+5

Boulevard to  
Glenwood

Under  
Construction

Target Completion  
Spring 2025

## Segments 2+3

McDaniel to  
Boulevard

Construction Bidding  
In Progress

## Segment 6

Glenwood/I-20

Design In Progress





# WESTSIDE TRAIL

## Segment 4

Washington Park to  
just north of  
Hollowell Pkwy

Under Construction

Target Completion  
Spring 2025





# RALPH DAVID ABERNATHY

## Westside Trail

Ralph David  
Abernathy  
Access Point

Target Completion  
Spring 2024

Ralph David  
Abernathy  
Streetscape

Target Completion  
Spring 2024





# ENOTA PARK

## Enota Park

Adjacent to  
Westside Trail south  
of I-20

Design  
Complete/In  
Permitting

Targeted  
Construction Start  
Summer 2024





# WESTSIDE PARK

## Conceptual Design

Establish trail typologies for mountain bikes, hikers, stormwater walk and within the park connections

February 26 community meeting





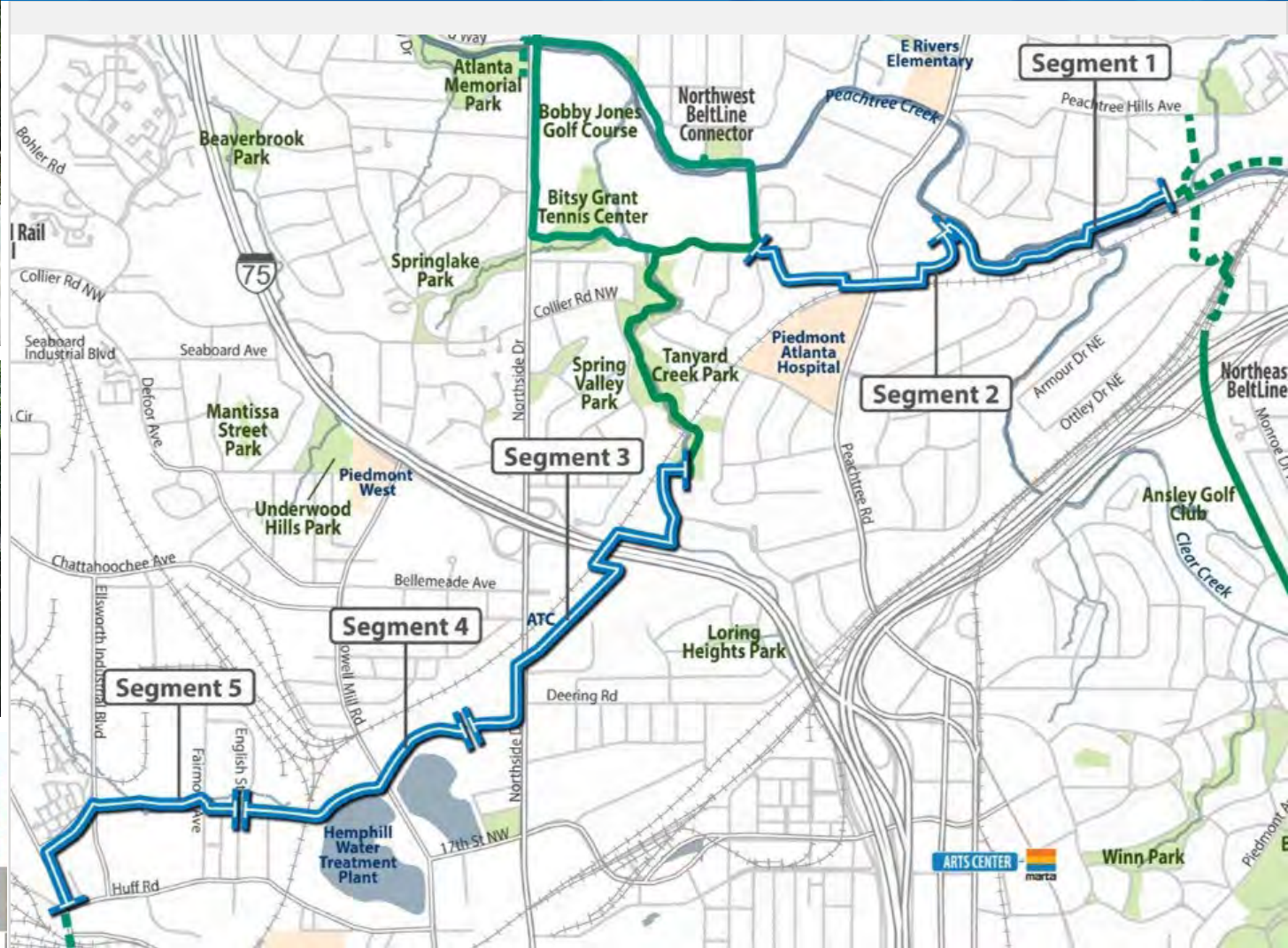
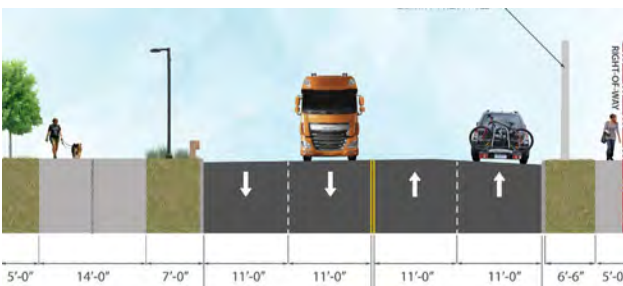
# NORTHWEST TRAIL

## Northwest Trail Segments 1-5

Design complete for all segments of the Northwest Trail by the end of 2024

Targeted Construction Start in Spring 2024:

- Segment 5
- Segment 3 (phase 1)
- Segment 1





# NORTHEAST TRAIL

## Northeast Trail Segment 1

Between 10<sup>th</sup> Street / Monroe Drive and Westminster Drive

Target Completion Fall 2024



## Northeast Trail Segment 2

Between Westminster Dr. and Plasters Ave. / Mayson Street

*Open!* Landscape Planting in Progress





# PONCE DE LEON STREETSCAPE

## Eastside Trail

Includes  
Access Ramp  
at Ponce de  
Leon Ave.

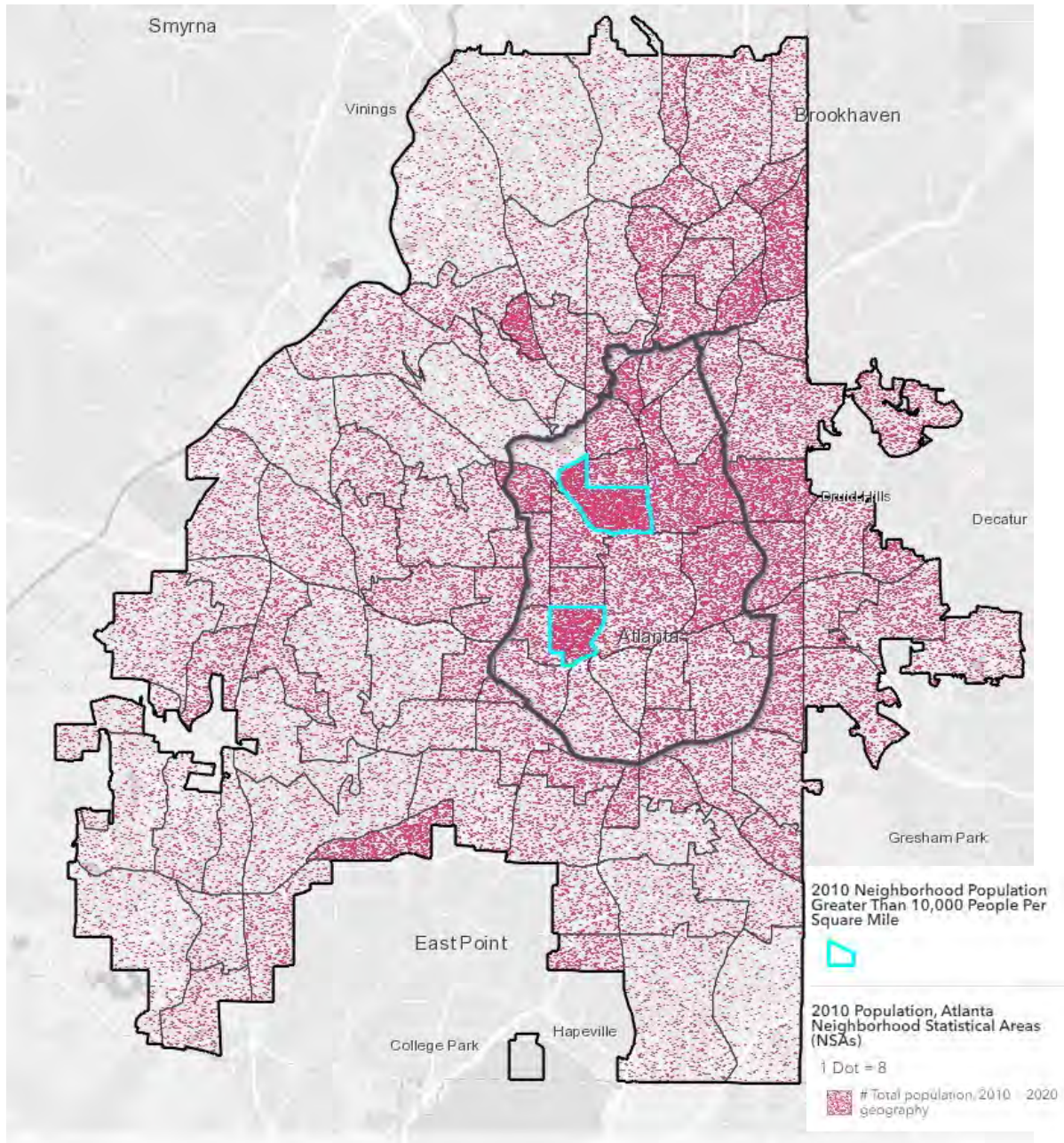
Boulevard to  
Freedom Parkway

Target Completion  
Spring 2024

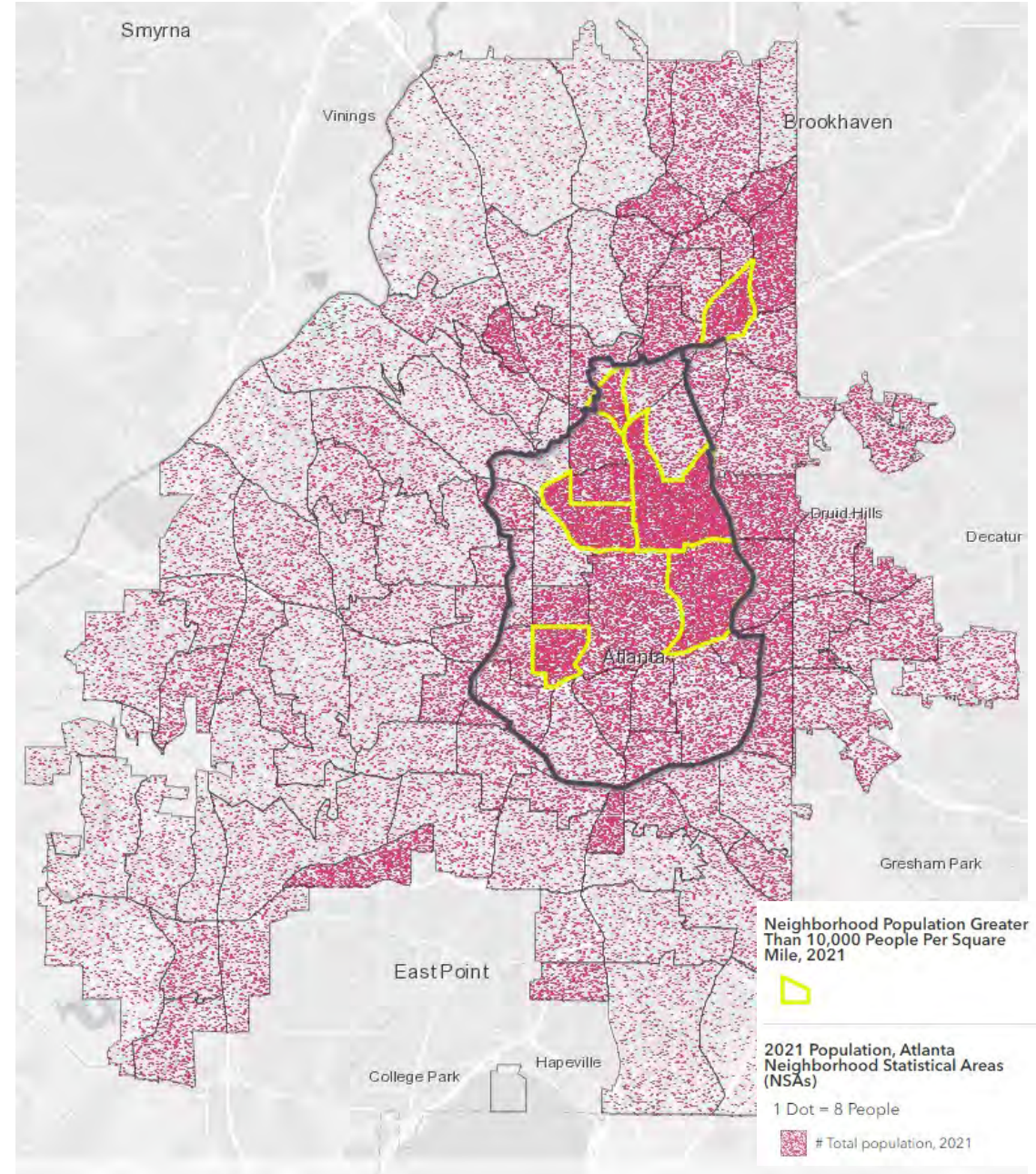




# 2010 Population Dot Density



# 2021 Population Dot Density





# STREETCAR EAST EXTENSION

Prioritized in 2023 as a More MARTA Tier 1 Project

The project is an extension of the existing streetcar to Ponce de Leon Ave. via the BeltLine eastside corridor

Target operation date is currently 2028



## PROGRAM MAP

### Tier 1

- A** Streetcar East Extension
- B** Clifton Corridor BRT
- C** Campbellton Rd BRT
- D** Summerhill BRT
- E** Cleveland Ave ART
- F** Metropolitan Pkwy ART
- G** Greenbriar Transit Center
- H** 5 Points Transformation
- I** Bankhead Platform Ext.
- O** MARTA Rail Stations



### Full Enhanced Bus Service

- New Routes
- More MARTA Routes with Service Increase
- Other Atlanta Routes



### Tier 2 - Future Projects

- |                             |                   |
|-----------------------------|-------------------|
| BeltLine Northeast          | North Ave BRT     |
| BeltLine Southeast          | Northside Dr BRT  |
| BeltLine Southwest          | Peschtree Rd ART  |
| BeltLine West               | Streetcar West    |
| Moore's Mill Transit Center | Vine City Station |



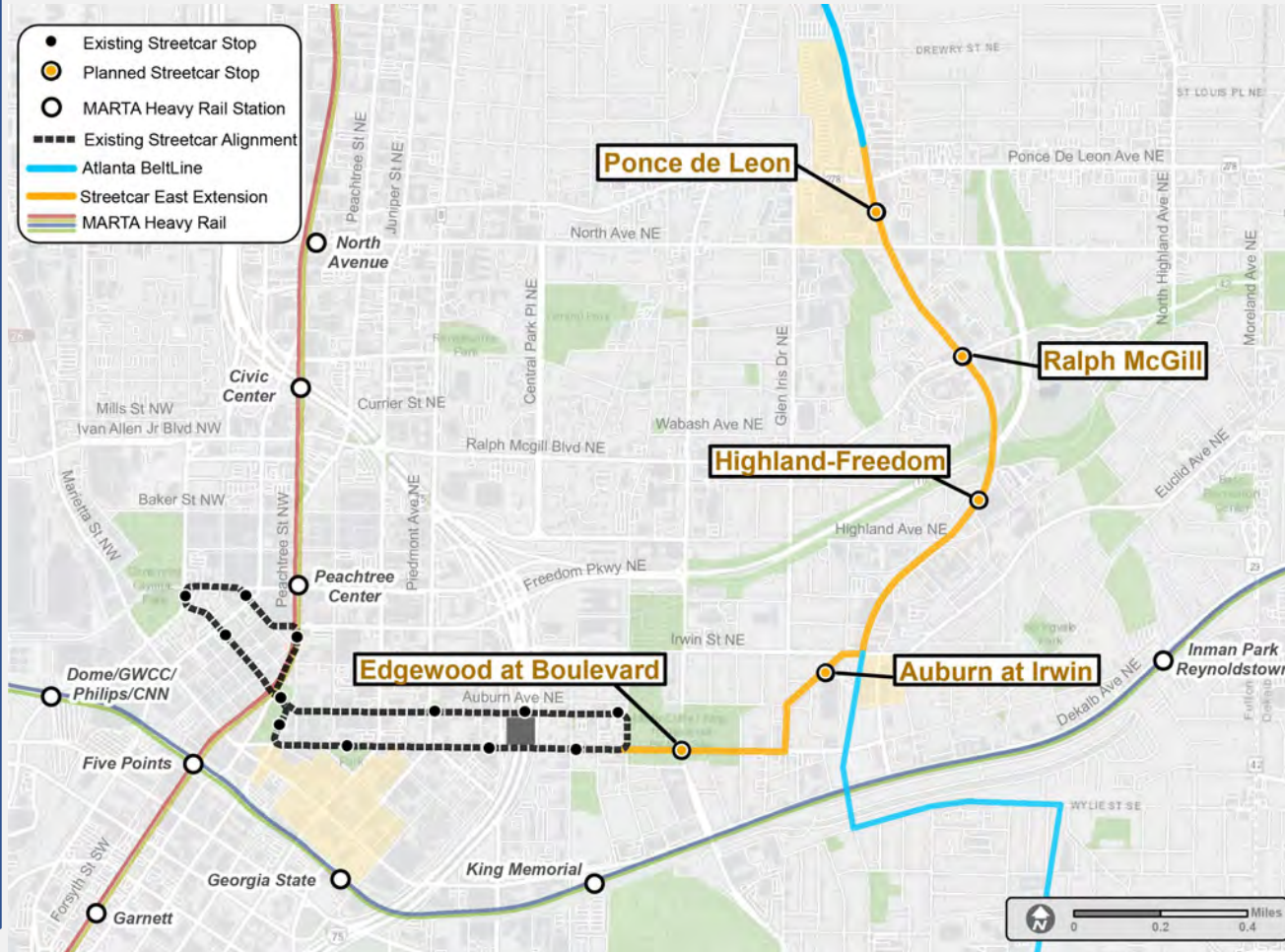
# STREETCAR EAST EXTENSION

## Status

Complete: 30%  
Design Documents

Phase 1: Examine existing streetcar for operational improvements, conduct vehicle analysis, and determine feasibility of turf track

Phase 2: Complete design services for expansion of the streetcar to Ponce de Leon Avenue



Nice, France



# ARTS & CULTURE

## Special Projects & Exhibitions

Lagos Atlanta  
Sister City Rising  
April 28<sup>th</sup>

Atlanta BeltLine  
Lantern Parade  
May 11<sup>th</sup>

BeltLine Beach  
Party May 26<sup>th</sup>

BeltLine After  
Dark June 15<sup>th</sup>





THANK YOU!

