



**December 2023**

**OSR – MOEDI Joint Stormwater Presentation**

Gabrielle Slade, Deputy Chief Equity Officer  
City of Atlanta, Mayor's Office of Equity, Diversity, and Inclusion

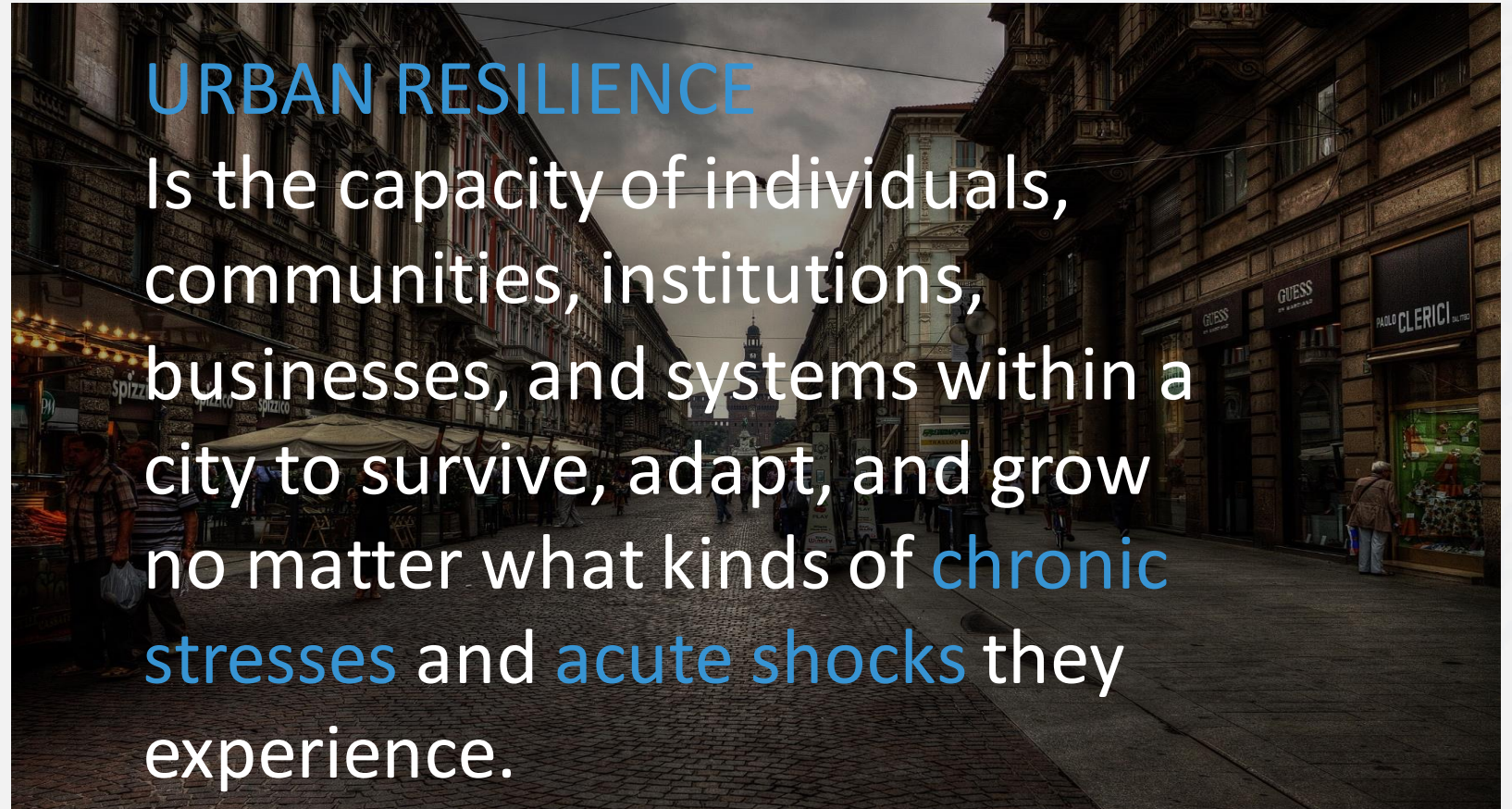
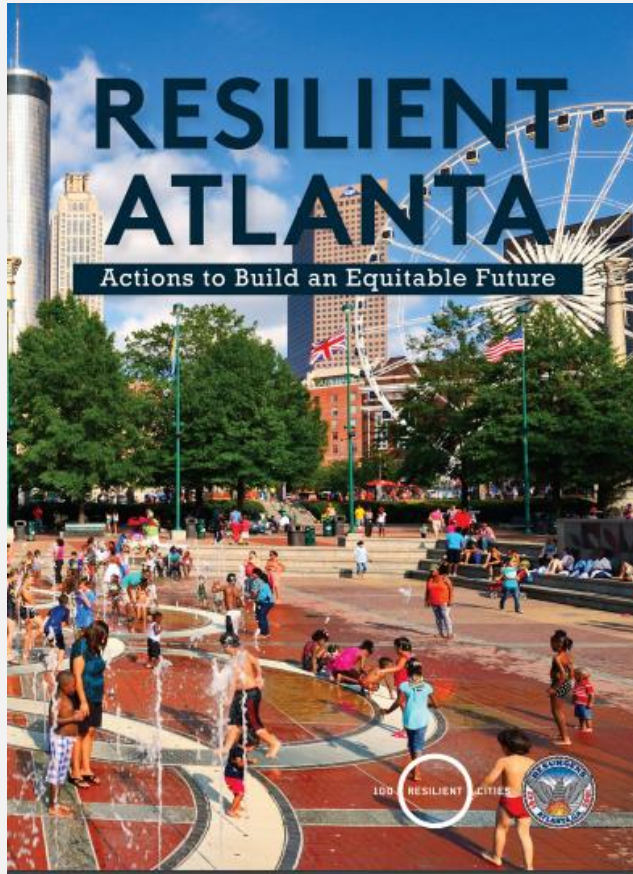
John R Seydel, Deputy Chief Sustainability Officer  
City of Atlanta, Mayor's Office of Sustainability and Resilience

# CITY OF ATLANTA MAYOR'S OFFICE OF SUSTAINABILITY & RESILIENCE

The Mayor's Office of Sustainability & Resilience leads science-based analysis informed by the community to establish, develop, implement, and promote policies, programs, and initiatives related to environmental sustainability, climate resilience, circular economy and food security rooted in environmental justice.



MAYOR'S OFFICE OF  
**Sustainability  
and Resilience**



# VISION 01

PRESERVE AND  
CELEBRATE  
WHO WE ARE

# VISION 02

ENABLE ALL  
METRO ATLANTANS  
TO PROSPER

# VISION 03

BUILD OUR  
FUTURE  
CITY TODAY

# VISION 04

DESIGN OUR  
SYSTEMS TO  
REFLECT OUR  
VALUES

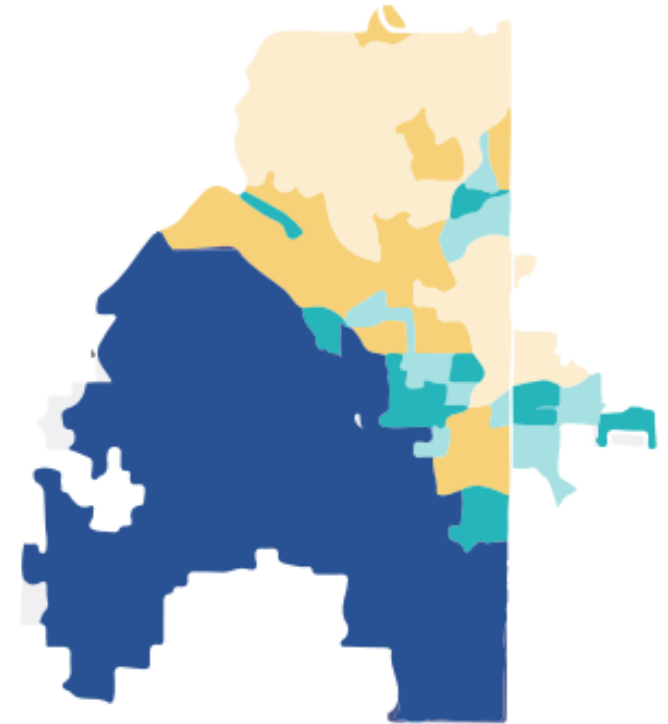
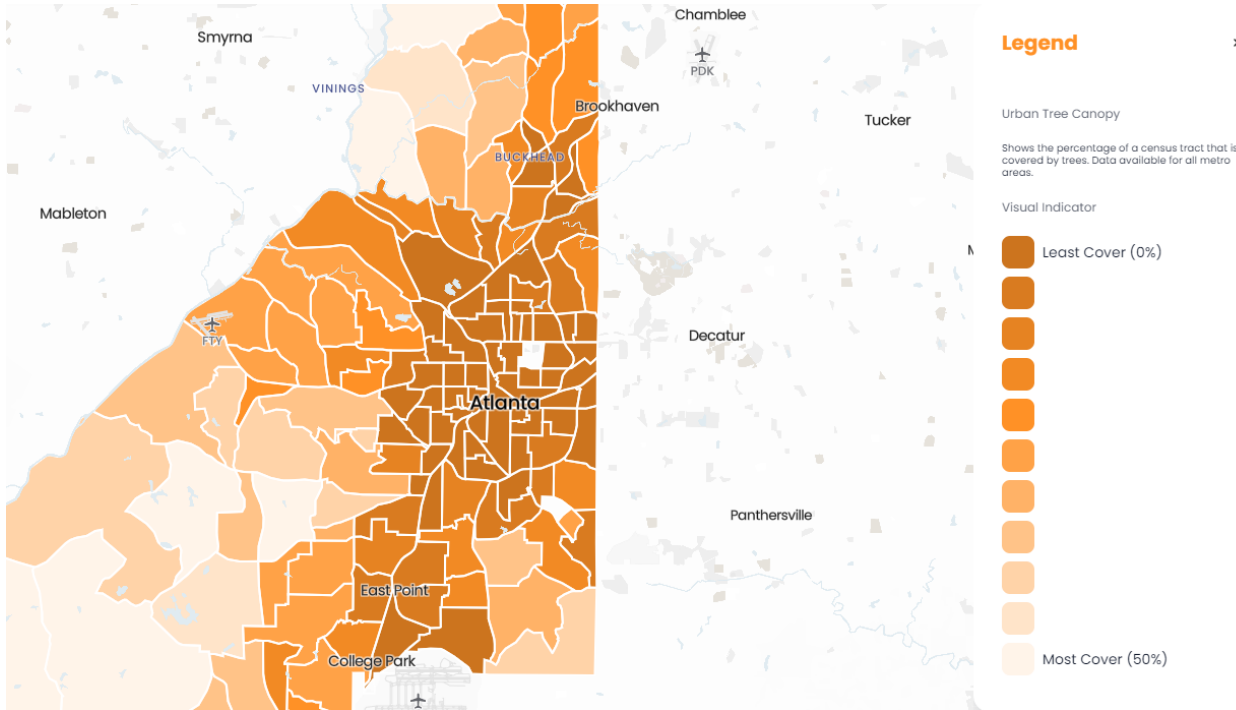
## Atlanta Resilience Strengths & Weaknesses

### Overall Strengths:

Local identity and culture, medical facilities and healthcare, local business development and innovation, robust and diverse local economy, higher education

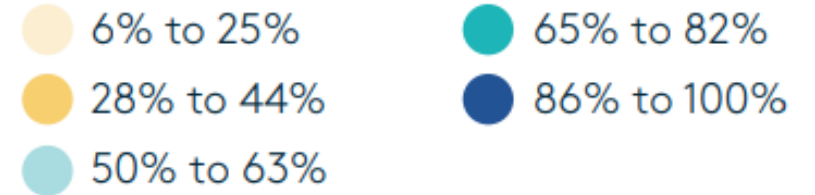
### Overall Weaknesses:

Housing, land use development, infrastructure deficiencies, public transportation and mobility, education (K-12), communication and collaboration among stakeholders



### % of Non-White Population

While the city is diverse, it is not spatially diverse. The non-white population is heavily concentrated in the south and west portions of the city. Source: Neighborhood Nexus



# Resilient Atlanta – Stormwater, Resilience, Equity Related Actions

## VISION 03: BUILD OUR FUTURE CITY TODAY

Facilitate the development of an equitable and inclusive city while preserving and expanding Atlanta's natural environment

**Target 3.4 - Create 500 new acres of publicly accessible greenspace by 2022.**

### 1. Action 3.4.3: Protect and expand Atlanta's tree canopy

- To advance goal of 50% tree canopy.

### 2. Action 3.4.2 Develop a Parks and Greenspace Master Plan (Activate ATL)

**Target 3.5 - Install sustainable energy- and water-efficient infrastructure improvements in public spaces as well as around 500 homes and businesses each year.**

### 1. Action: 3.5.2 - Create a stormwater utility fee to develop and fund a comprehensive stormwater management program

### 2. Action 3.5.1 - Launch a restaurant water efficiency pilot program for the City of Atlanta

#### Resilience Value to Atlantans:



*Primary Driver*

Ensures Continuity of Critical Services



*Secondary Driver*

Provides & Enhances Natural & Manmade Assets

#### Lead Implementing Partners:

CoA Department of Watershed Management, CoA Mayor's Office of Resilience, The Conservation Fund, American Rivers, West Atlanta Watershed Alliance

#### Potential Metrics/Measures of Success:

- Volume of pollutants captured by installed Green Infrastructure Best Management Practices (BMPs)
- # of BMPs installed
- # of flooding incidents citywide and at U.S. Federal Emergency Management Agency recognized flood-prone areas
- \$ collected through stormwater utility fee

# Resilient Atlanta – Stormwater, Resilience, Equity Related Actions

## VISION 04: DESIGN OUR SYSTEMS TO REFLECT OUR VALUES

Adapt Atlanta's civic systems to enable the City to become a leader in equity, sustainability, and resilience

**Target 4.1 - Adapt and expand City systems to promote resilience planning.**

1. Action 4.1.1: Create a City investment checklist to ensure equity and resilience in public investments.
2. Action 4.1.2: Establish a system and evaluation process for joint infrastructure investments (for MAF Infrastructure Funding)
3. Action 4.1.4: Improve responsiveness to stormwater flooding

**Target 4.2 - Support policies and systems to increase civic participation from Metro Atlantans.**

1. Action 4.2.5: Leverage crowdsourced data to improve City systems
2. Action 4.2.6: Create an Equity and Resilience Scorecard

**Target 4.4 - Improve public safety and community preparedness by strengthening community cohesion and program evaluation**

1. Action 4.4.4: Strengthen community disaster preparedness and response

### Resilience Value to Atlantans:



*Primary Driver*

Provides & Enhances Natural & Manmade Assets



*Secondary Driver*

Ensures Continuity of Critical Services

### Lead Implementing Partners:

CoA Department of Watershed Management,  
CoA Mayor's Office of Emergency Preparedness, Atlanta-Fulton County  
Emergency Management Agency

### Potential Metrics/Measures of Success:

- # of potential projects identified resulting in reduction of legacy stormwater projects
- # of projects identified and included in annual budgeting cycle
- # of projects identified for FEMA pre-disaster mitigation funding

**Funding:** Partially Funded; CoA "SWIT"

# Current OSR policies, programs, partnerships that support climate resilient stormwater management

1. Commercial Building Energy Efficiency Ordinance
2. Sustainable Building Ordinance
3. Lake Charlotte Carbon Credit Program
4. C-PACE Financing Program
5. Smart Surfaces Coalition
6. Atlanta Heat & Vulnerability Assessment





We are working to . . .



Comprehensive smart building energy, water, gas use infrastructure and investment.



Analyze and report data related to goals, update goals and re-establish metrics



Develop City of Atlanta's Comprehensive Sustainability and Resilience Plan



Develop City-wide comprehensive sustainable, equitable procurement strategy



Establish Cross Departmental Utility Data Reporting and Ensure Plan alignment



Update The City's Sustainable Building Ordinance

# Looking Forward – Continued Interdepartmental Collaboration

1. **Comprehensive** smart building energy, water, gas use infrastructure utilizing EECBG federal funding
  - Working with DWM on getting water meter software
2. **Sustainable Building Ordinance Update**
  - Explore stormwater benefits more explicitly for City buildings
3. **Social Bonds Reporting**
  - Moving Atlanta Forward Infrastructure investments
4. **Scaling up** carbon credit programs through tree preservation and plantings
5. **Suggestions:**
  - Green Infrastructure Task Force, Water Equity Task Force
  - DPR - Urban Forestry Master Plan Connection to this work (Made possible from USDA \$5,000,000 Grant)
  - DPR – City of Atlanta Trails Master Plan
  - DCP – Tree Protection Ordinance Rewrite
  - DCP – City Comprehensive Plan
  - ATLDOT – 2024 Atlanta Transportation Plan



# Community Informed Planning – Clean Energy Advisory Board

## “What a Sustainable and Climate Resilient Atlanta Looks like?”

- *Storm damage and drainage; vanishing trees;*
- *With the little concern in water conservation and the price of water in Atlanta. All residents especially those of lower income are paying too much for water. It also puts Atlanta in a vulnerable place when drought arises again.*
- *Clean energy, flooding protection, transit for all, affordable housing, community-led*
- *Atlanta embraces environmental protection for all and is rooted in cleaner air, water, circular waste streams, local food, and more micro-mobile access from neighborhood to neighborhood.*
- *A Recycled Water Ordinance for new construction*



**QUESTIONS?**



**THANK YOU!**



# MAYOR'S OFFICE OF EQUITY, DIVERSITY, AND INCLUSION



Candace Staniel  
she/her  
Chief Equity Officer



Gabrielle Slade  
she/her  
Deputy Chief  
Equity Officer



Malik Brown  
he/him  
Director of  
LGBTQ Affairs



Bridgette Binford  
she/her  
Executive Assistant



Tahajnah Spence  
she/her  
Project Manager



Ashley Hodges  
she/they  
Project Manager

**MOEDI MISSION STATEMENT:** To identify and develop systems and behavioral change solutions that advance equitable outcomes to Move Atlanta Forward.

# EQUITY

The state where predictability of success or failure is not correlated with identity or cultural markers such as race, gender, and sexual orientation. Equity strives to **identify and eliminate barriers** that have prevented the full participation of some groups, **increase justice** and fairness within the procedures and processes of institutions or systems, as well as in their distribution of resources.

## Top ten most vulnerable neighborhoods

Of Atlanta's neighborhoods with more than 1,000 residents, a new assessment found these are the most vulnerable to extreme heat, and the combined risks of heat and flooding.

By heat risk	By heat and flood risk
English Avenue	Pittsburgh
Cascade Avenue/Road	English Avenue
Center Hill	Vine City
Sylvan Hills	West End
Hammond Park	The Villages at Castleberry Hill
Washington Park	Lenox
Pittsburgh	Mechanicsville
Ashview Heights	Castleberry Hill
West End	Buckhead Village
Vine City	Sylvan Hills

Source: Atlanta Journal-Constitution, July 20, 2023

[“Heat risk is growing. These are Atlanta’s most vulnerable neighborhoods”](#)

## **EQUITABLE PRACTICES IN ADDRESSING COMMUNITY NEEDS**

### **Inclusive Decision-Making Processes**

- Actively involving communities in decision-making through a robust community engagement strategy.
- Ensuring representation from diverse backgrounds in planning and policy.

### **Prioritizing Vulnerable Populations**

- Allocating resources based on vulnerability assessments that consider socioeconomic factors.
- Prioritizing the development of green spaces and sustainable infrastructure in marginalized communities.

### **Humanitarian Impact**

- Protection of lives and prevention of injuries
- Minimization of displacement and its associated challenges
- Address root causes of disparities in access to resources and opportunities



# QUESTIONS?



**THANK YOU!**

