



# ATLANTA BELTLINE, INC. REPORT

Quarterly  
Update for  
Community  
Development  
and Human  
Resources  
Committee

May 23, 2023



@atlantabeltline











# AMBASSADOR YOUNG CELEBRATION

Celebrated Ambassador Andrew Young's 91<sup>st</sup> birthday with a BeltLine tour and party

Helped Young family and Fulton County unveil new mural on the Westside Trail in honor of Ambassador's sustainability and environmental justice work







# AFFORDABLE HOUSING

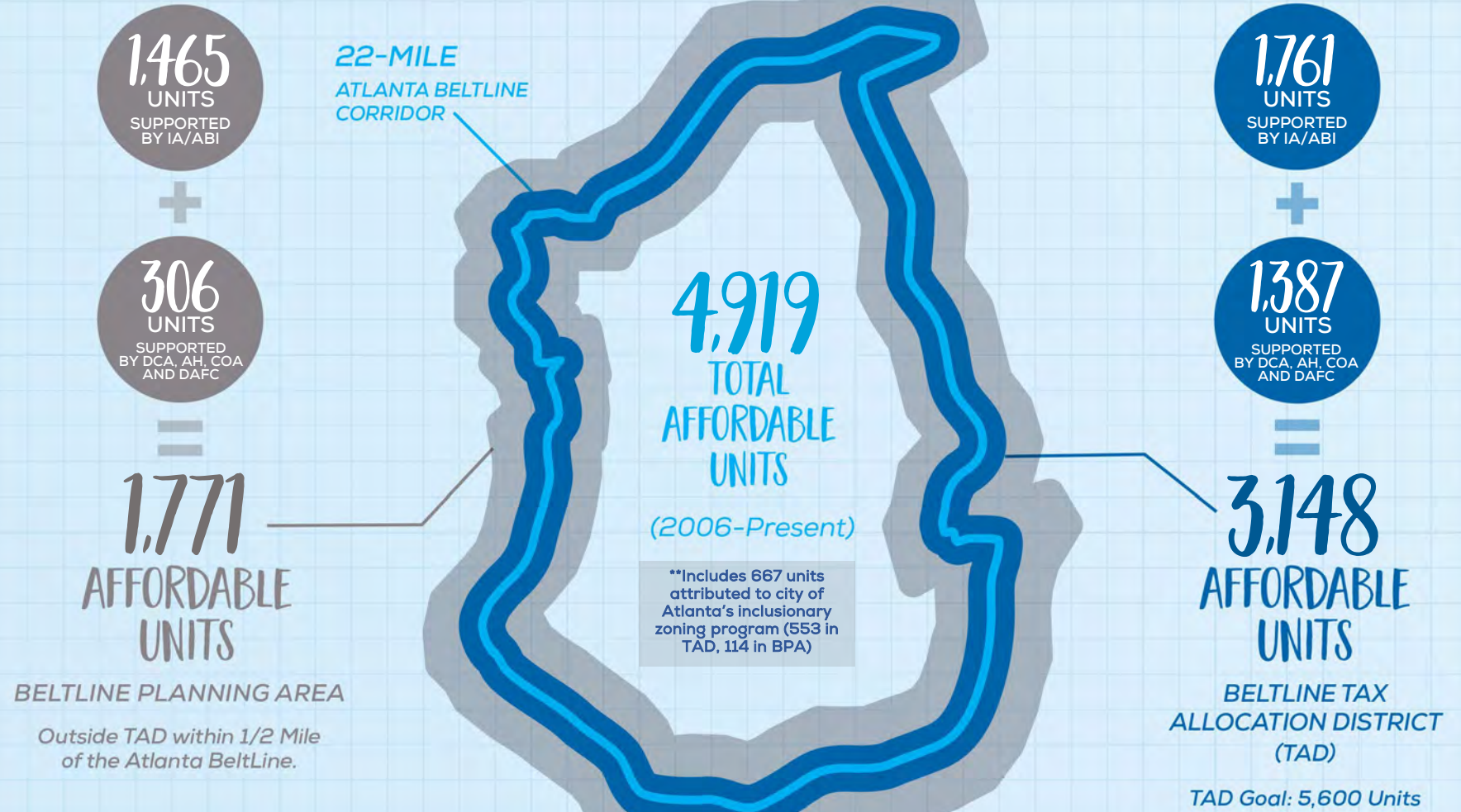
## AFFORDABLE UNITS CREATED/PRESERVED

TAD and Planning Area boundaries are represented here for illustrative purposes only.

For precise boundary lines, please visit: [beltline.org/map](http://beltline.org/map)

### CHART LEGEND >>

- ABI Atlanta BeltLine
- AH Atlanta Housing
- COA City of Atlanta
- DAFC Development Authority of Fulton County
- DCA Department of Community Affairs
- IA Invest Atlanta





# HOUSING DASHBOARD

[beltline.org/housing](http://beltline.org/housing)

Tracks units created and preserved in the BeltLine TAD and the BeltLine Planning Area (BPA)

Breaks down units by AMI level

Includes specifics on each property:

- Funding sources + incentives
- Website
- # of affordable + market units

Atlanta BeltLine Affordable Housing Tracker

Year  
No category selected

☰

**Housing Development Name**

- 1015 Boulevard SE
- 1055 Arden
- 1265 Lakewood
- ▲ 542 Boulevard
- ▲ 555 Boulevard
- ▲ Abbington at Ormewood Park
- ▲ Academy Lofts at Adair Park
- Adair Court
- Alexan Old Fourth Ward
- Alton East
- AMLI Parkside
- ▲ Ashley Collegetown
- Aspire Westside
- Capitol Gateway
- ▲ Capitol View Apts

Selection required on one or more elements

Last update: 16 seconds ago

Selection required on one or more elements

Blue Circle = Completed in TAD | Blue Triangle = Completed in BPA  
 Orange Circle = Under Construction in TAD | Orange Triangle = Under Construction in BPA

City of Atlanta, Esri, HERE, Garmin, GeoTechnologies, Inc., USGS, EPA | City of Atlanta Department of City Planning | Esri, HERE  
 Powered by Esri

**TAD Affordable Units**

**🏠 3148**

**BPA Affordable Units**

**🏠 1771**

**ABI BeltLine Affordable Housing Progress**  
Towards 5,600 Goal

56%

Progress Bar

**TAD Unit Breakdown by AMI Level**

Displays selected development(s) AMI levels.

**BPA Unit Breakdown by AMI Level**

Displays selected development(s) AMI levels.

This dashboard tracks progress towards Atlanta BeltLine, Inc.'s (ABI) goal of supporting affordable housing within the Atlanta BeltLine Planning Area (BPA) and Atlanta BeltLine Tax Allocation District (TAD). ABI aims to assist in the creation or preservation of 5,600 affordable units within the TAD by the end of the year 2030.





# BUSINESS SOLUTIONS OFFICE

Next Free Quarterly  
Business Breakfast  
on the BeltLine on  
May 11 from  
8 – 9:30 a.m.

Topic: building and  
maintaining business  
resiliency

Location:  
Trees Atlanta

>>>

*Last quarter's  
breakfast at  
Pittsburgh Yards*







# COMPLETING THE LOOP

**Streetscapes**

- Under Construction

**Atlanta BeltLine Trails**

- Completed
- Under Construction
- Shovel Ready
- In Design

**Atlanta BeltLine & Partner Parks**

- Complete
- Shovel Ready

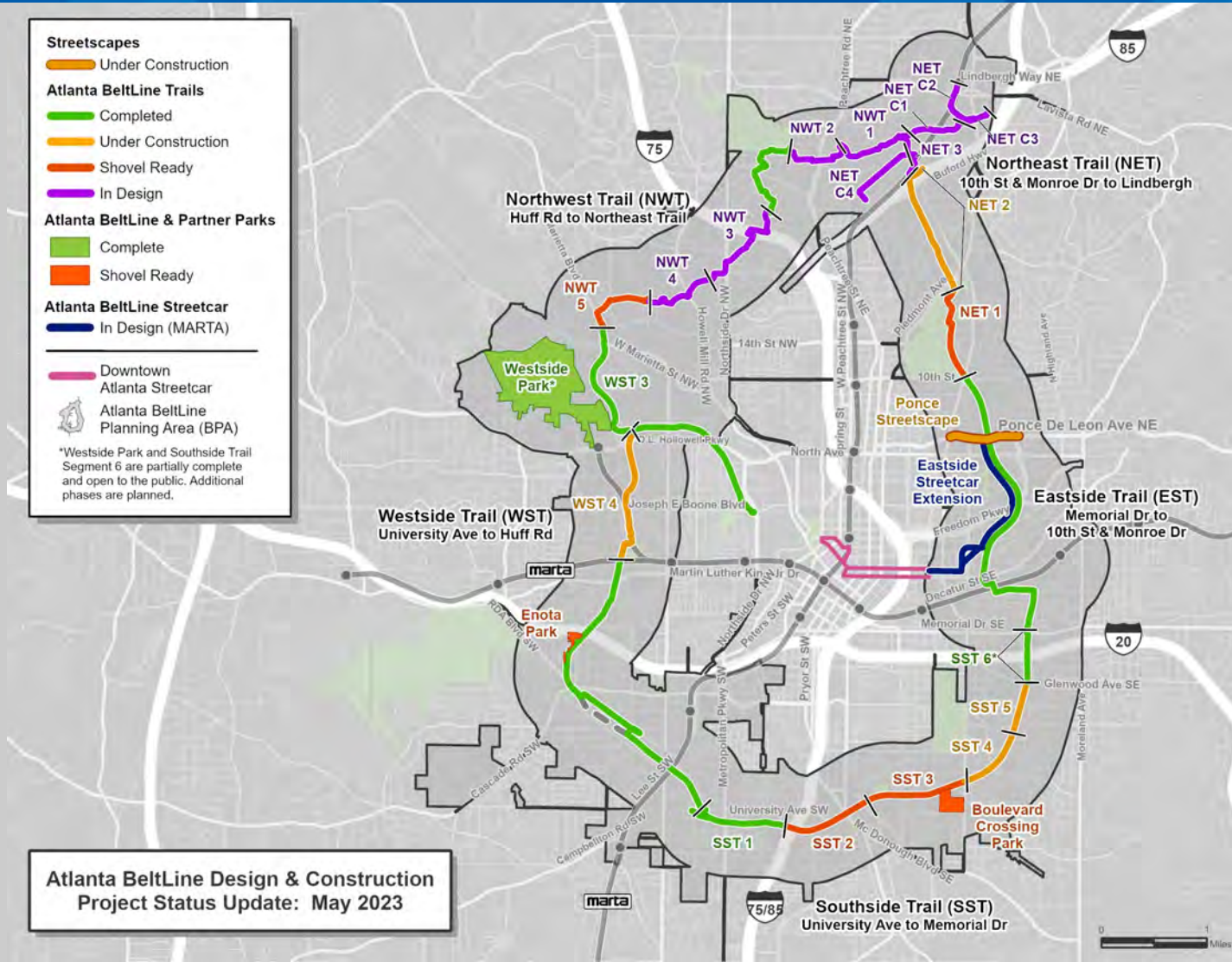
**Atlanta BeltLine Streetcar**

- In Design (MARTA)

**Downtown Atlanta Streetcar**

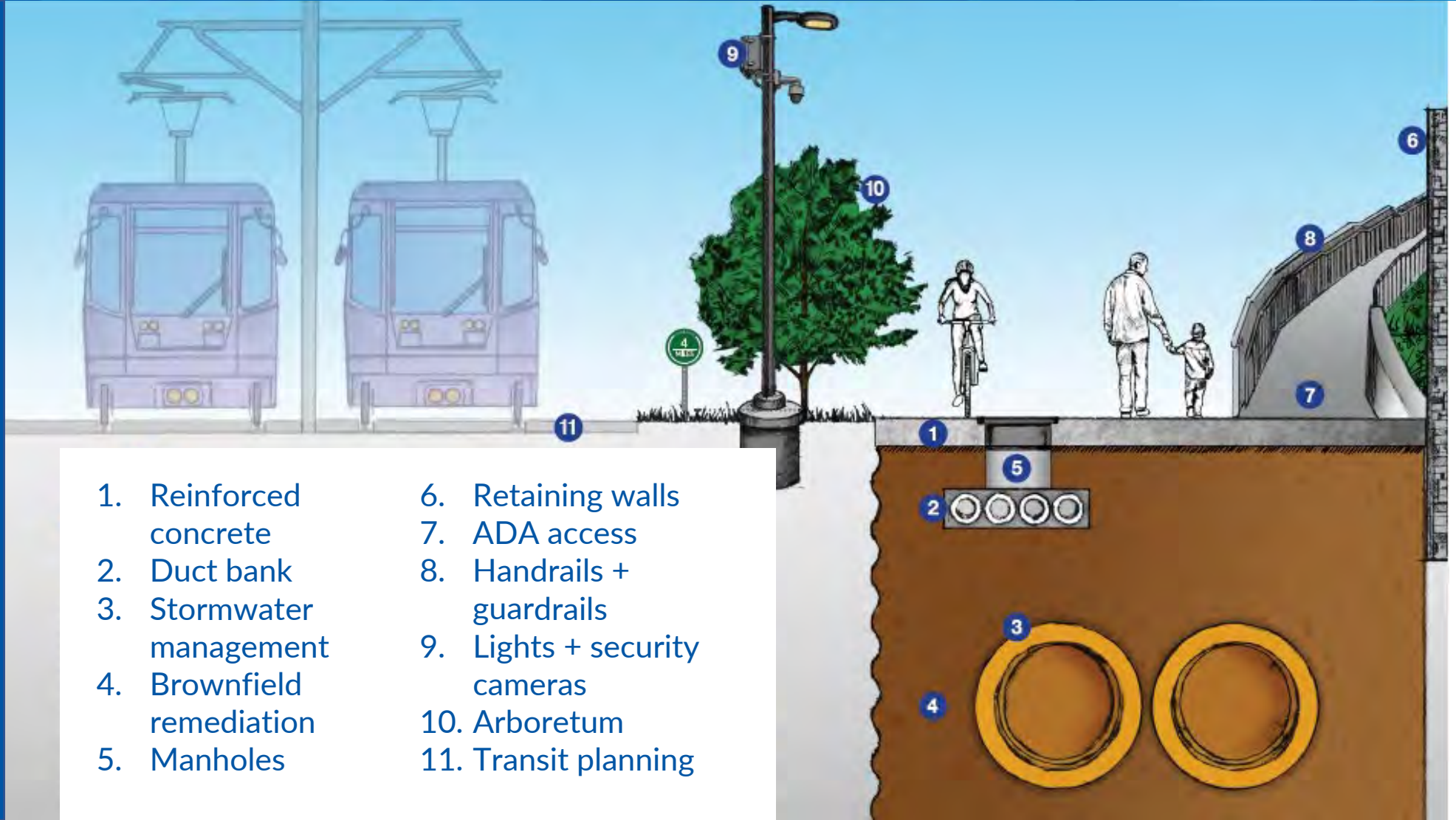
- Atlanta BeltLine Planning Area (BPA)

\*Westside Park and Southside Trail Segment 6 are partially complete and open to the public. Additional phases are planned.





# WHAT GOES INTO BUILDING THE BELTLINE



1. Reinforced concrete
2. Duct bank
3. Stormwater management
4. Brownfield remediation
5. Manholes
6. Retaining walls
7. ADA access
8. Handrails + guardrails
9. Lights + security cameras
10. Arboretum
11. Transit planning

>>>  
Illustration of what goes into building the trail component





# SOUTHSIDE TRAIL – SEGMENTS 4 + 5

This segment of the Southside Trail will connect between Boulevard and Glenwood Avenue

Trail will close for construction in May

Construction estimated to be complete in spring 2025



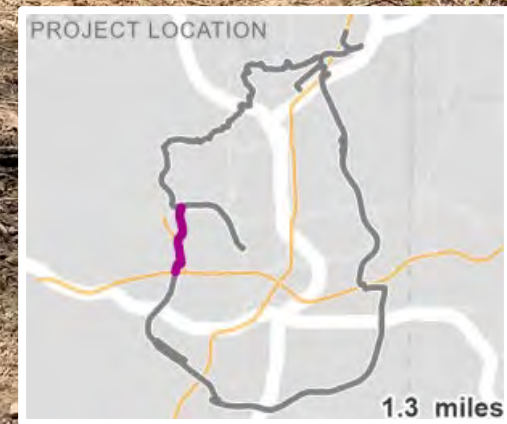




# WESTSIDE TRAIL – SEGMENT 4

This final major segment of the Westside Trail will connect between Washington Park and Hollowell Parkway

Construction estimated to be complete in spring 2025





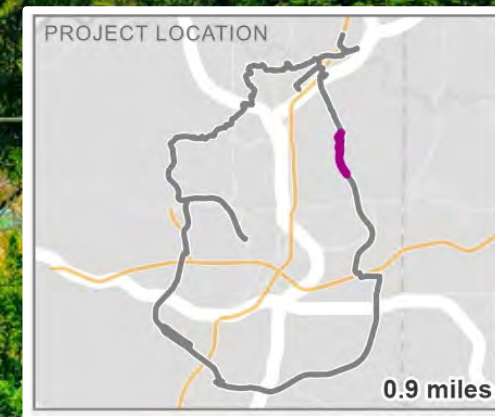


# NORTHEAST TRAIL – SEGMENT 1

Bids due May 24  
for a construction  
contractor

Segment located  
between 10<sup>th</sup>  
Street / Monroe  
Drive and  
Westminster Drive

Construction  
estimated to begin  
in summer 2023  
and take ~18  
months to  
complete







# NORTHEAST TRAIL – SEGMENT 2

Phase II  
construction

Located between  
Westminster Drive  
and Mayson Street  
/ Plasters Avenue

Construction  
estimated to be  
complete in fall  
2023

Landscaping  
expected to be  
complete in spring  
2024







# NORTHWEST TRAIL

Segment 1 (0.8 miles): 30% design

Segment 2 (0.7 miles): 30% design expected this summer

Segment 3 (1.2 miles): 30% design expected in June

Segment 4 (0.9 miles): 30% design expected this fall

Segment 5 (0.7 miles): 90% design







# FUTURE MAINTENANCE

Need to ensure sustainability of BeltLine investment through enhanced operations & maintenance

BeltLine TAD funds cannot be used for O&M

ABI works closely with City Parks and Rec, but more funding is needed; peer projects spend 3x more







# ARTS & CULTURE

Call for artists open until May 30

National Black Arts Festival and APS collaboration this spring

May 20 – Lantern Parade on the Westside Trail

BeltLine Walls murals along the Southside Trail

June 2-3 - BeltLine After Dark in Westside Park





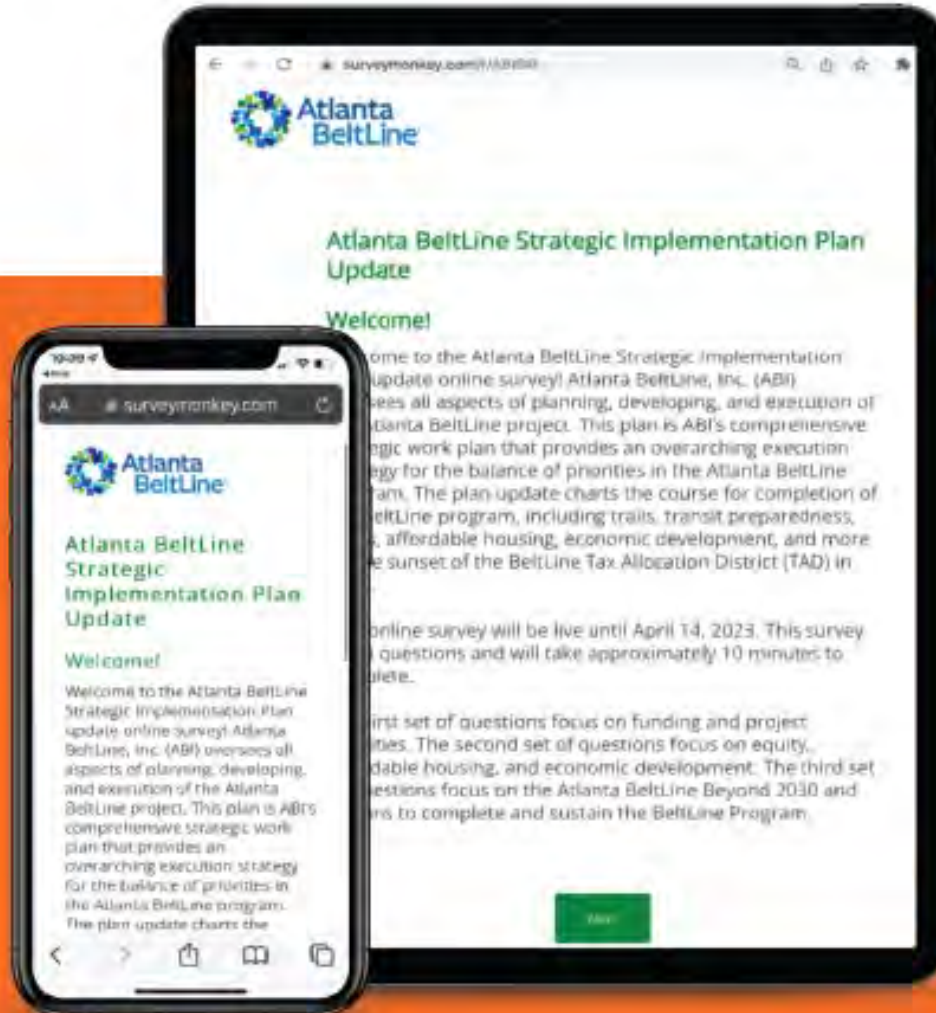


# STRATEGIC IMPLEMENTATION PLAN

Updating the road map to finishing the Atlanta BeltLine with community feedback

Survey was open through April 21

The next round of community engagement begins in June







# BETH MCMILLAN RETIREMENT

Congratulations to Beth on retiring following a 30-year career of public service, including 15 years leading the Community Planning and Engagement Department with the Atlanta BeltLine







# QUESTIONS?



@atlantabeltline