

RECREATION & PARKS FOR ALL  
**ACTIVATE  
ATL**

**ATL  
PARKS  
& REC**

## DPR Equity Data Tool

As a result of this tool, DPR can use data-driven mapping to evaluate needs and help guide equitable prioritization of capital investment and improvement for parks and recreation across the City of Atlanta.

[Activate-ATL.com](http://Activate-ATL.com)

December 2021

**ACTIVATE  
ATL**

Comprehensive Parks and Recreation  
Master Plan



- Atlanta's 10-Year Comprehensive Master Plan for Parks and Rec
- City Council Approved in December 2021
- Component of the City's Comprehensive Development Plan
- Integrates 'Atlanta City Design' values of access, equity, progress, ambition, and nature
- Three main goals: **Invest**, **Connect**, and **Grow**
- Special Focus Equity







EVERYONE DESERVES  
**A PARK** WITHIN A  
10-MINUTE WALK  
**OF HOME.**

## **Pledge to the Trust for Public Land 10 Minute Walk**

77% of Atlantans now have access to a park within a 10-minute journey of home

# Expected Outcomes

1

Data-Driven Mapping helping to prioritize parks, rec centers, and neighborhoods with the greatest need for park investment and capital improvements as DPR implements Activate ATL, 10-Year Plan

2

Track:

- (54) Data Points across (6) Maps
- The impact of DPR's efforts over time beginning at the baseline

3

Connect parks and recreation to health equity and life expectancy, helping to decrease disparities between Atlanta neighborhoods



# Incorporating Health into the Data Tool

## 12 Measurable Health Outcomes

- Life Expectancy
- Asthma
- High Cholesterol
- Coronary Heart Disease
- Diabetes
- Stroke
- Mental Health
- Chronic Kidney Disease
- Chronic Obstructive Pulmonary Disease
- High Blood Pressure
- COVID Risk
- Obesity

## 4 Measurable Health Behaviors

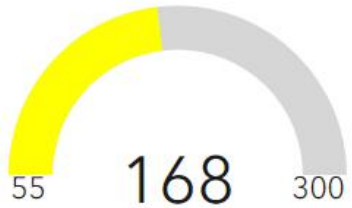
- Physical Inactivity
- Smoking
- Sleep less than 7 hours
- Binge Drinking



# City of Atlanta Parks and Recreation Equity Data Tool

A Data-driven Tool for Prioritizing Investments across the City of Atlanta

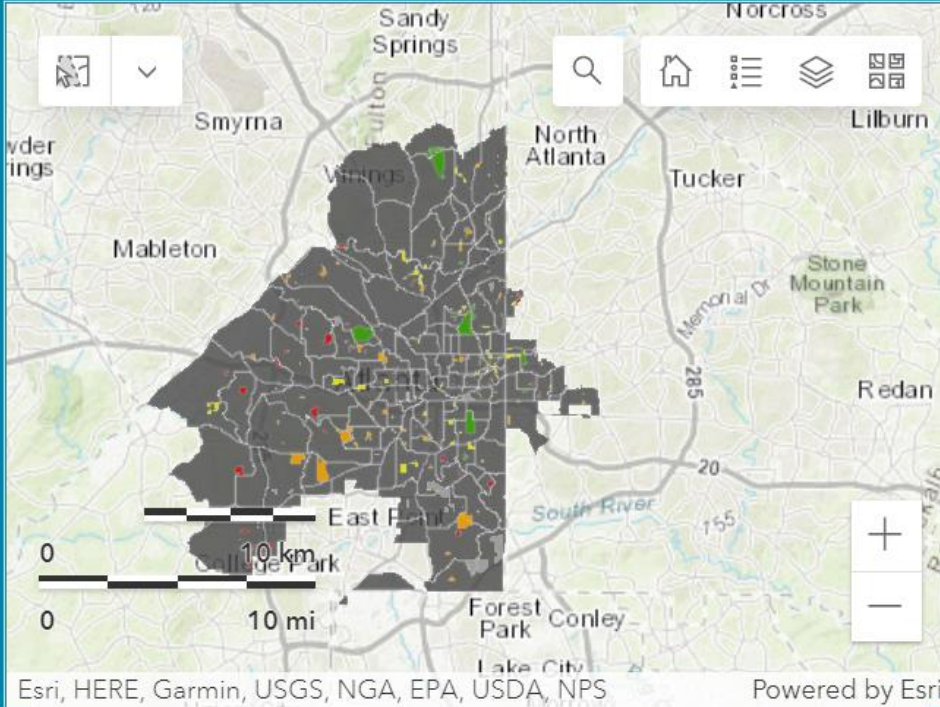
## Total Park Need Score



Total Park Need Score is the composite of all four scoring categories shown on the gear dials to the right of the screen.

Parks

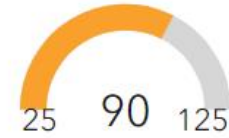
Rec



Esri, HERE, Garmin, USGS, NGA, EPA, USDA, NPS Powered by Esri

ATL Parks

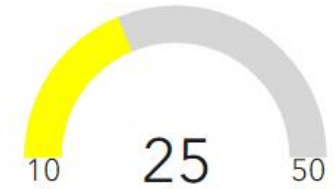
## Park Conditions & Funding



Parks

Rec

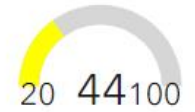
## Level of Service



## Community Perception



## Community Need



## Parks with the Greatest Need

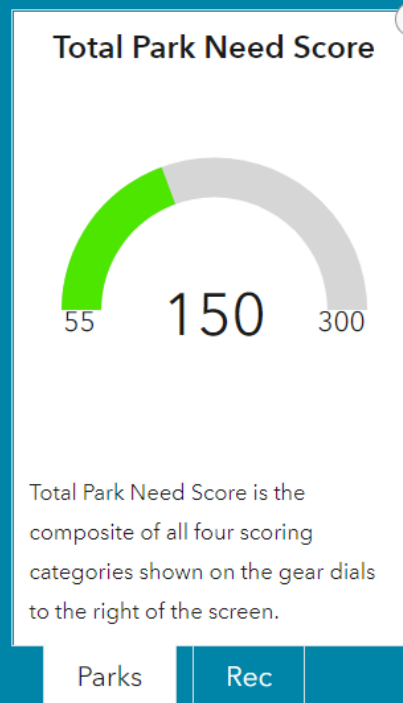
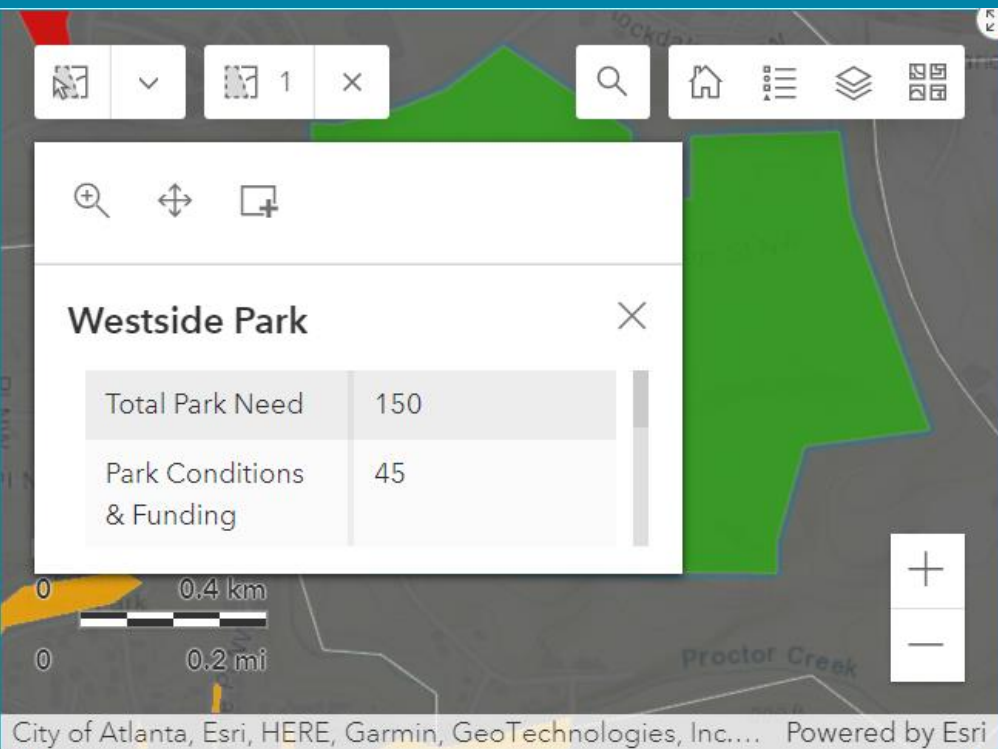
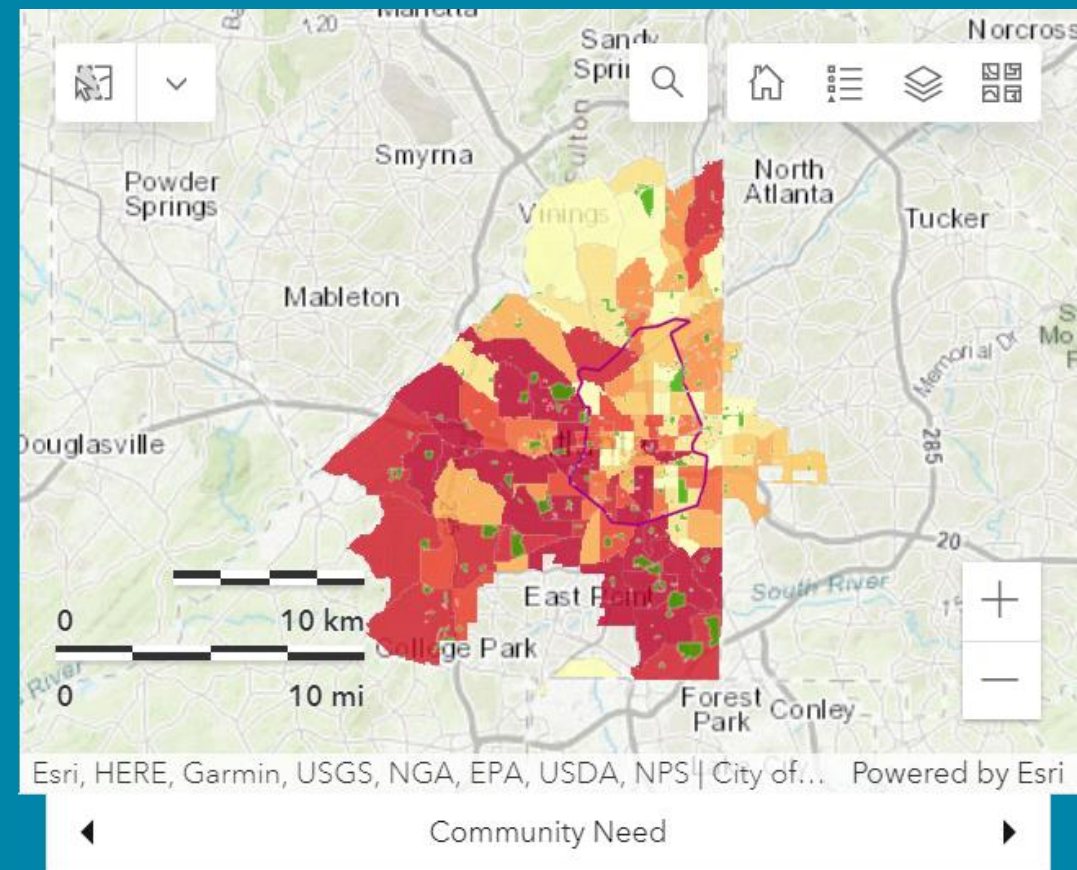
- North Camp Creek Parkway Nature Preserve  
Park Score: 230
- Stone Hogan Park  
Park Score: 228
- Melvin Drive Park

## Rec Centers with the Greatest Need

- Collier Recreation Center  
Total Need Score: 193
- Brownwood Recreation Center  
Total Need Score: 189
- Pittman Park Recreation Center

## 54 Data Points across 6 Maps

- Level of Service (Park Access + Acreage)
- Physical Park + Rec Center Conditions
- Capital Funding since 2010
- Community Perceptions (Statistically Valid Survey)
- Social Determinants of Health



## Community Need Indicators

- Demographics
- Food Environment
- Environmental Health
- Housing Conditions
- Transportation Environments
- Public Safety Concern



# Data Included in the Community Need Score

| Concentration of Vulnerable Age Groups  | Food Environment   | Environmental Health  | Vulnerable Housing Conditions   | Income & Educational Attainment  |
|---|--|---|---|--|
| <ul style="list-style-type: none"> <li>Individuals ages 5 and under</li> <li>Individuals ages 65 and older</li> </ul> | <ul style="list-style-type: none"> <li>Farmer's Markets</li> <li>Grocery Retail locations</li> <li>Low USDA food access</li> </ul> | <ul style="list-style-type: none"> <li>Particulate Matter Exposure</li> <li>Lead Exposure Risk</li> </ul> | <ul style="list-style-type: none"> <li>Household income under \$25,000</li> <li>Gross Rent above \$1500</li> <li>Housing Values</li> <li>Housing Affordability</li> </ul> | <ul style="list-style-type: none"> <li>High School Completion</li> <li>School Enrollment</li> <li>Income Inequality</li> </ul> |

| Racial and Ethnic Diversity   | Levels of Public Safety Concern                                       | Street Connectivity and Transportation Access   | Transportation Environments  | Life Expectancy   |
|---|---|---|--|---|
| <ul style="list-style-type: none"> <li>Racial and ethnic diversity</li> </ul> | <ul style="list-style-type: none"> <li>Violent crime rates</li> </ul> | <ul style="list-style-type: none"> <li>Walk Score</li> <li>Transit Score</li> <li>Bike Score</li> <li>Concentration of sidewalks (near park and rec centers)</li> </ul> | <ul style="list-style-type: none"> <li>Vehicle only involved accidents</li> <li>Bicycle involved accidents</li> <li>Pedestrian involved accidents</li> </ul> | <ul style="list-style-type: none"> <li>Life expectancy</li> </ul> |



RECREATION & PARKS FOR ALL

# ACTIVATE ATL

 [@AtlantaDPRCA](#)

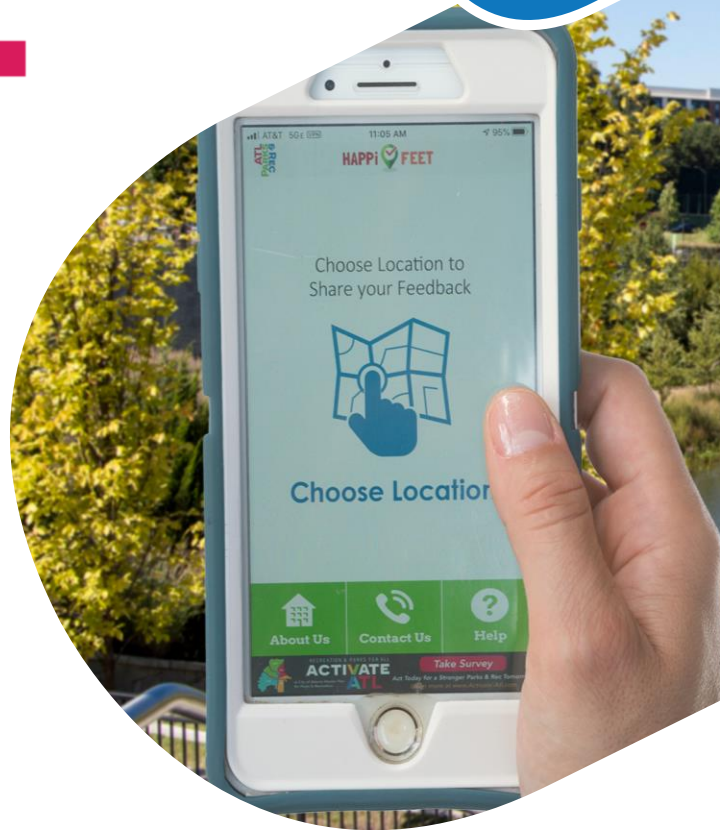
 [@ATLParksandRec](#)

 [Activate-ATL.com](#)

 [activate-atl@atlantaga.gov](mailto:activate-atl@atlantaga.gov)



**HAPPiFEET**



**ATL  
PARKS  
& REC**