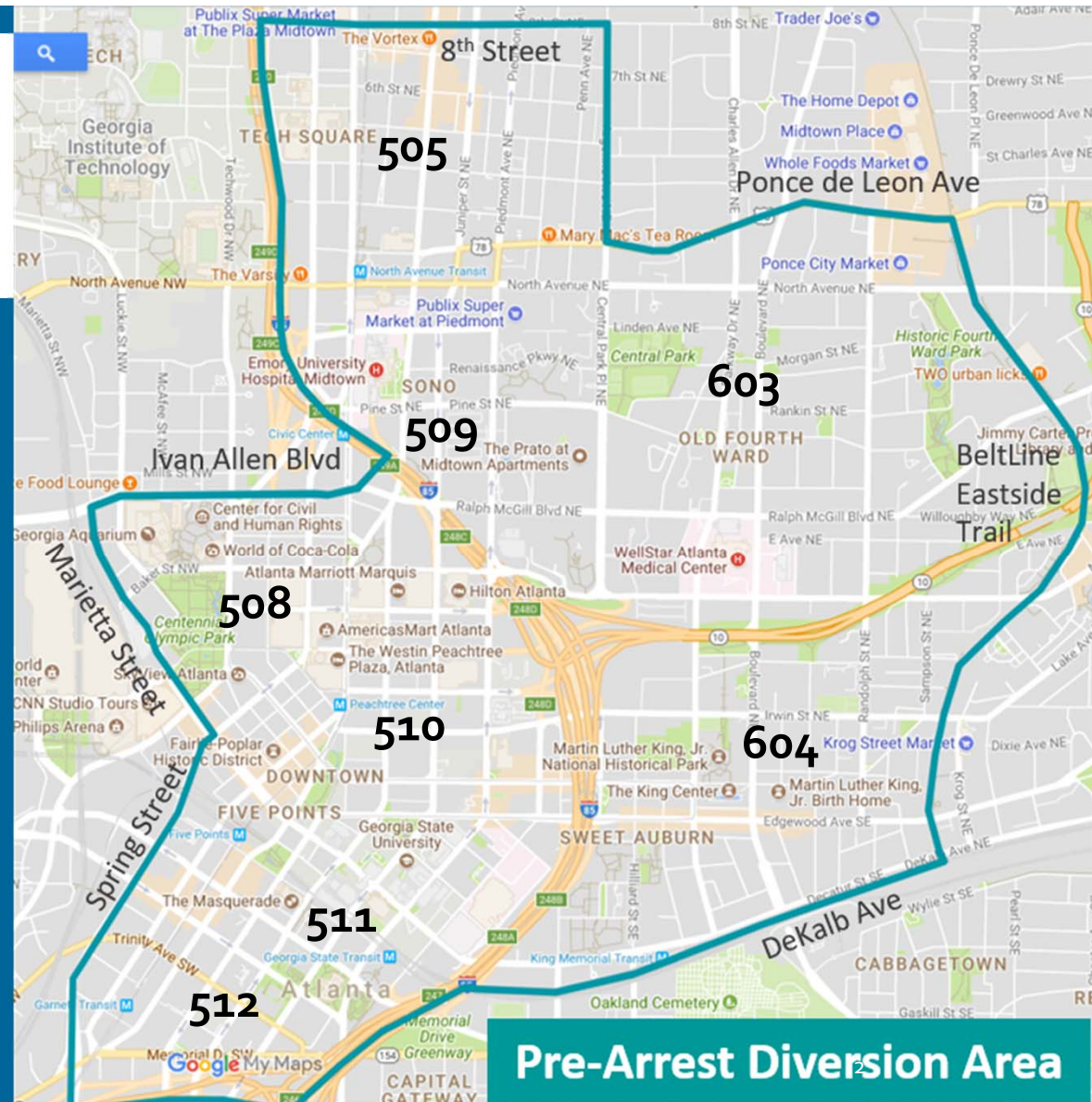




**ATLANTA/FULTON COUNTY  
PRE-ARREST  
DIVERSION  
INITIATIVE**

# PAD PILOT

- The two-year pilot serves Atlanta's Midtown, Downtown and Old Fourth Ward
- The pilot area includes portions of City Council Districts 1, 2, 4, and 5
- The pilot is funded through City of Atlanta, Fulton County, and private foundations
- The initiative is a partnership between city and county criminal justice agencies, including the Solicitors' Offices, District Attorney, Public Defender's Offices, and Atlanta Police Department
- Social services providers, community based organizations, neighborhood and business groups serve on the initiative's advisory committee



# PAD REFERRAL PROCESS

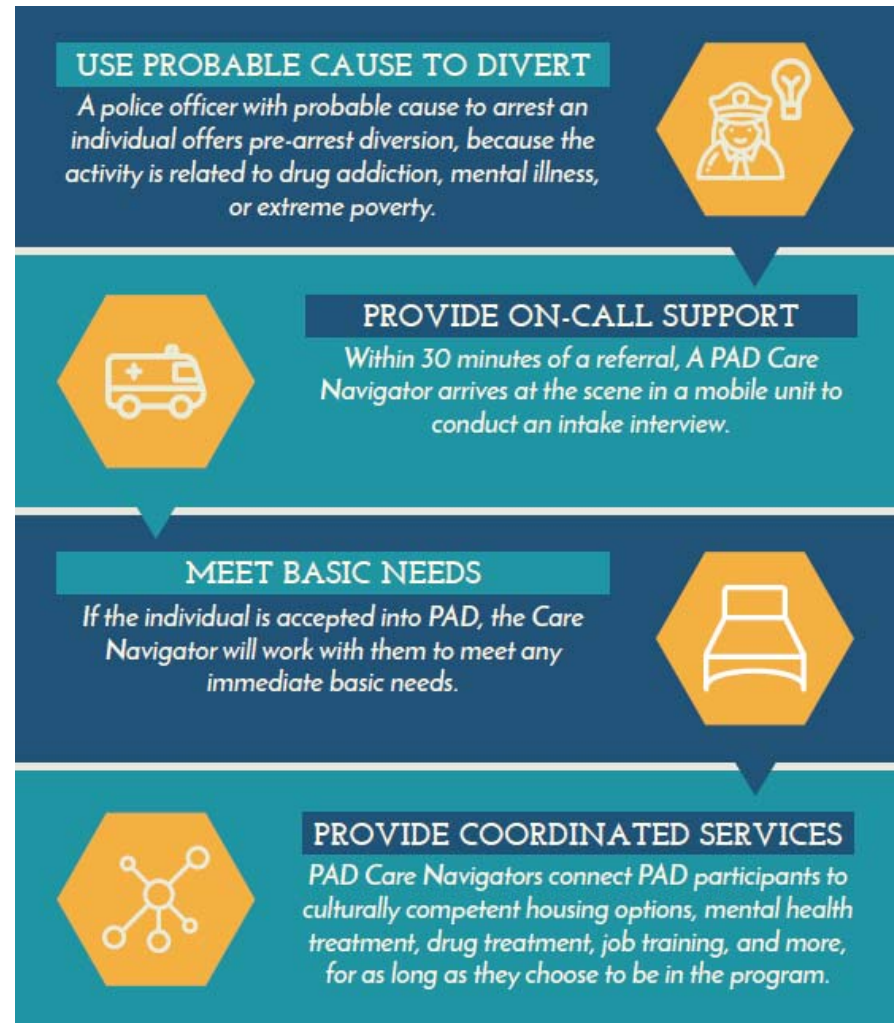
The mobile Care Navigation team is currently available during these referral hours:

**TUESDAY** 8AM – 2PM

**WEDNESDAY** 8AM – 2PM

**THURSDAY** 3PM – 9PM

**FRIDAY/SAT** 7PM – 5AM



# PAD PARTICIPANTS TO DATE

# DIVERSIONS	DIVERTED CHARGE	BARRIERS	ARREST HISTORY
<b>11 participants</b> diverted from <b>Fulton County Jail</b>	<ul style="list-style-type: none"> <li>• Criminal Trespass</li> </ul>	<p>19 participants are <b>chronically homeless</b>,</p> <p>18 had <b>no identification</b>,</p> <p>3 diagnosed with <b>chronic disease</b>,</p> <p>13 living with <b>mental illness</b>,</p> <p>8 of whom have co-occurring <b>substance misuse</b>.</p>	<p>Based on available information, current PAD participants were arrested by the Atlanta Police Department a <b>total of 64 times since 2015</b>.</p> <p>Since entering the program, <b>3 participants</b> have been re-arrested and since released.</p>
<b>13 participants</b> diverted from <b>Atlanta City Detention Center</b>	<ul style="list-style-type: none"> <li>• Loitering</li> <li>• Panhandling</li> <li>• Pedestrian in roadway</li> <li>• Solicitation</li> <li>• Drinking in public</li> <li>• Urban camping</li> <li>• Unauthorized person in vehicle</li> <li>• Littering</li> <li>• Disorderly conduct</li> </ul>		

# CARE NAVIGATION SERVICES PROVIDED

**INITIAL INTAKE:** All participants provided meal at intake and follow-up appointment scheduled

**SHELTER:**

- 18 participants placed in emergency hotel stay
- 2 participants placed at an emergency shelter

**LINKAGE TO CARE:** All active participants have received linkage to service providers for identification, mental health/substance use, or workforce training services

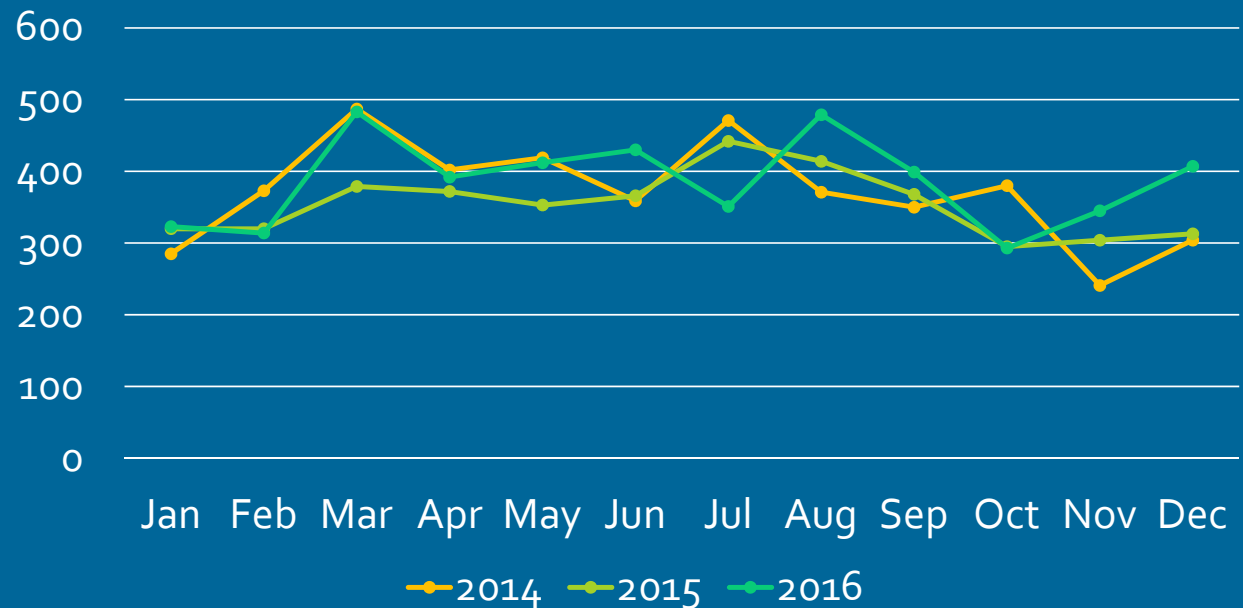
**ONGOING CASE MANAGEMENT:**  
Weekly contact and relationship-building



# ATLANTA POLICE DEPARTMENT ARRESTS PAD PILOT AREA, 2014-2016

- Nearly 4,500 relevant arrests/year, 370/month on average
- Slightly more arrests in the Jul-Sep quarter

### Arrests by Month, 2014-2016



# COST IMPACT ANALYSIS (2014-2016)

## Individuals at ACDC with at least 1 PAD charge anytime over the 3 years:

- 40% of the total bookings
- 63% of the total custody days

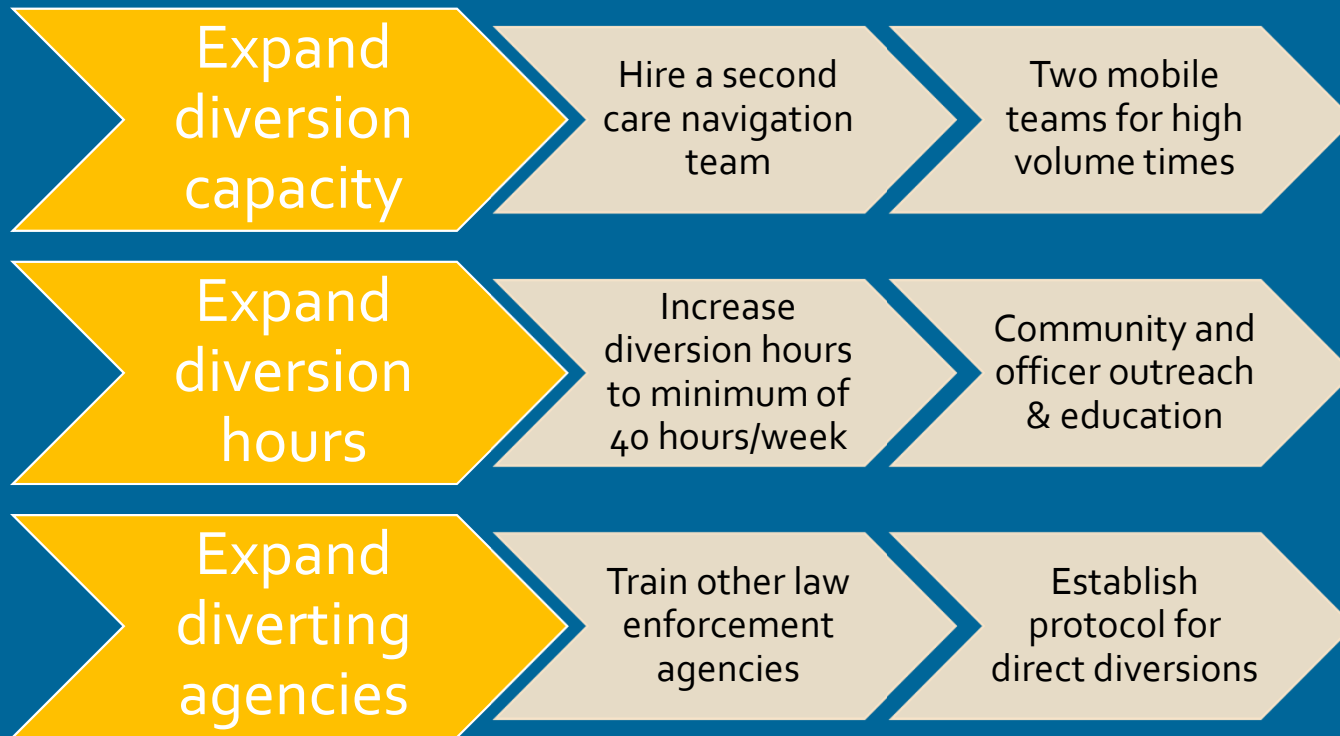
## Individuals at ACDC with ONLY PAD-related charges over the 3 years:

- 15% of the total bookings
- 17% of the total custody days

## Potential Cost Savings of Diversion:

- 100 top offenders (only PAD-related charges) had average of 2.5 arrests and 108 days in custody over 3 years
- Diverting from jail could save as much as \$400,000/year in jail costs

# DEEPENING OUR IMPACT IN THE CITY CORE





# THE NEXT SIX MONTHS: PATH TO SUCCESS



# THANK YOU

