

Municipal Clerk  
Atlanta, Georgia

08-0-1704

AN ORDINANCE

CDP-08-32

BY: COMMUNITY DEVELOPMENT & HUMAN RESOURCES COMMITTEE

AN ORDINANCE TO AMEND THE LAND USE ELEMENT OF THE 2008 ATLANTA STRATEGIC ACTION PLAN (ASAP) SO AS TO RE-DESIGNATE PROPERTY THAT IS LOCATED AT **328-336 ORMOND STREET & 831-835 GRANT STREET** FROM THE LOW DENSITY RESIDENTIAL LAND USE DESIGNATION TO THE LOW DENSITY COMMERCIAL LAND USE DESIGNATION, AND FOR OTHER PURPOSES.

NPU-W

COUNCIL DISTRICT 1

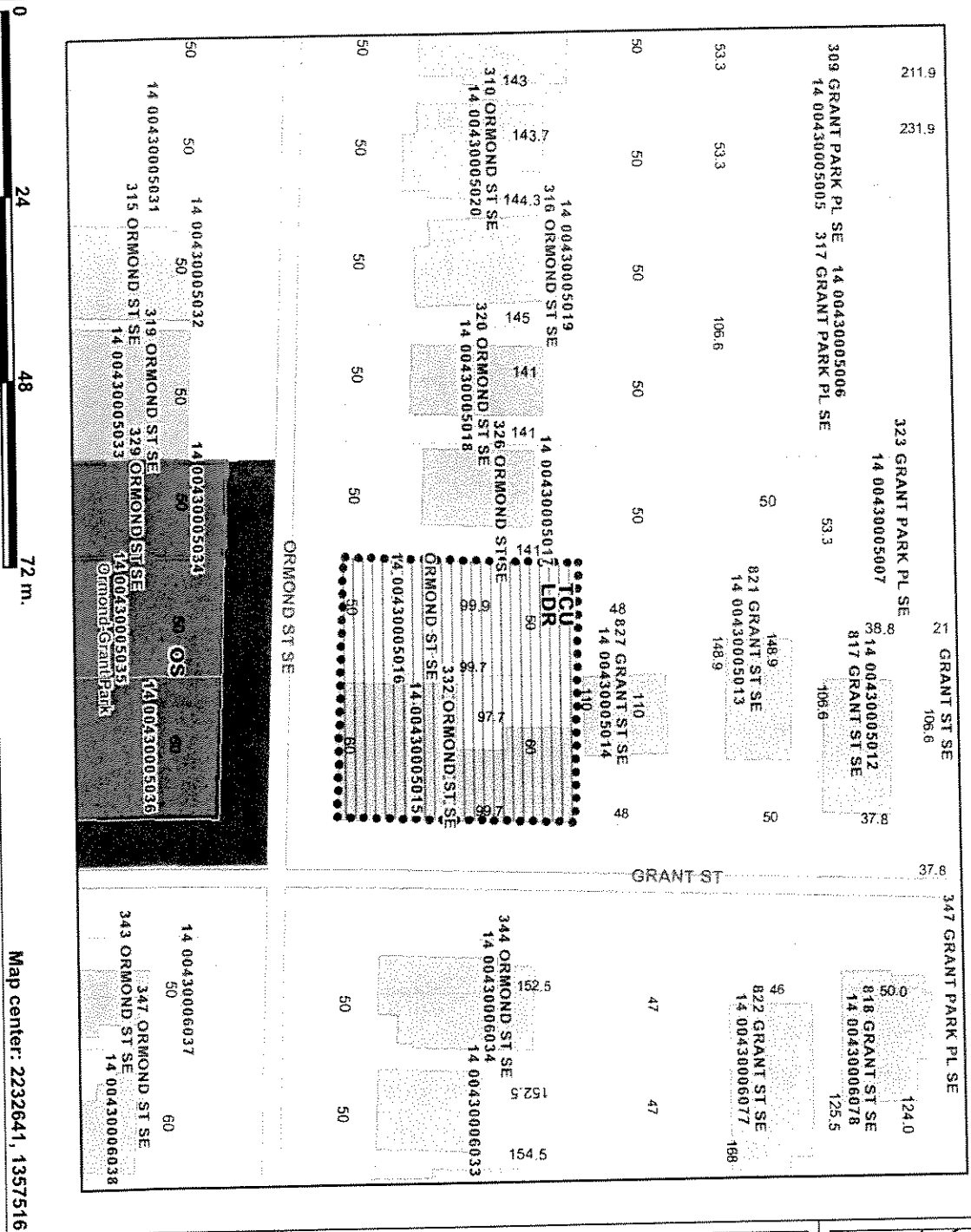
THE CITY COUNCIL OF THE CITY OF ATLANTA, GEORGIA HEREBY ORDAINS:

SECTION 1. That the 2008 ATLANTA STRATEGIC ACTION PLAN (ASAP) of the City of Atlanta, Georgia is hereby amended by changing the Land Use Element of said Plan so as to redesignate property that is located at **328-336 ORMOND STREET & 831-835 GRANT STREET** from the Low Density Residential land use designation to the Low Density Commercial land use designation, and for other purposes.

All that tract or parcels of land lying and being in *Land Lots 43, of the 14<sup>th</sup> District of Fulton County, Georgia*. Said property is more specifically shown on the attached map, Exhibit 'A', which is hereby made a part of this ordinance.

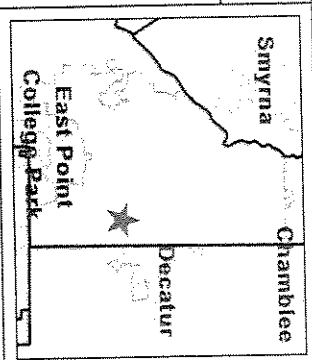
SECTION 2. That all ordinances or parts of ordinances which are in conflict with this ordinance are hereby repealed.

# 328-336 Ormond & 831-835 Grant St Exhibit A IDR to LDC



This map is a user generated static output from an Internet mapping site and is for general reference only. Data layers that appear on this map may or may not be accurate, current, or otherwise reliable. THIS MAP IS NOT TO BE USED FOR NAVIGATION.

Map center: 2232641, 1357516



### Legend

- Points of Interest
- Streets and Highways
- Other Limited Access
- State Route
- Arterial Roads
- Streets
- Ramps
- Unknown
- Interstates
- County Boundaries
- Parcel Dimensions
- Parcel Address
- Parcels
- Building Footprints
- Streams
- Parks
- Greenway Acquisitions
- Future Land Use
- Single Family Residential
- TCU
- Low Density Residential
- Medium Density Residential
- High Density Residential
- Very High Density Residential
- Low Density Commercial
- High Density Commercial
- Office/Institution
- Office/Institution/Residential
- Open Space
- Industrial
- Mixed Use
- Atlanta City Limits
- Metro Cities

Scale: 1:803